

Cottingham Times

and District

Issue 222 - July 2020



STEPHEN RICHARDSON
PLUMBING, HEATING & GAS SERVICES LTD

01482 840 877
07779 887 769



Contact us for professional advice on all your plumbing and heating needs.

www.srichardsonplumbing.co.uk
srichardsonplumbers@gmail.com

Unit 2D Station Road
Cottingham, HU16 4LL



*T&C's apply

Home...

it's where the heart is.

Magnolia
House



From the moment you first walk through the door, you'll know you've found the right care home for you or your loved one! Magnolia House, in the leafy suburb of Cottingham, is a wonderful, five star residential home for the elderly.

Residential Care ~ Dementia Care
Respite Care ~ Day Care

With a genuine 'home from home' atmosphere, relaxing environment, tasty, nutritious food and beautifully landscaped, extensive gardens Magnolia House values the importance of elderly care whilst offering a whole new lifestyle with unrivalled services. Our dedicated activities co-ordinator organises a variety of leisure pursuits, therapies, entertainments and outings to stimulate, inform and brighten the day for everyone.

Call us or drop in for a chat over a cup of tea!



NEW! Lovely, beautifully appointed double rooms now available for those couples wishing to remain together for a break, respite or permanent care.

Stylish décor • Elegant rooms with en suite

- Bespoke and individual care plans
- 24 hour care and support

Magnolia House • 42 Hull Road, Cottingham,
East Riding of Yorkshire, HU16 4PX

T: 01482 845038

www.parklanehealthcare.co.uk

Park Lane
HEALTHCARE

making new memories

THE COTTINGHAM TIMES

1 Forge Place, South Rise, Skidby, Cottingham HU16 5UL
Telephone: 01482 840035 :: Mobile 07563 885388

Editor: Keith Teale

Published Monthly by: The Cottingham Times

Enquiries: Advertising

Tel: 01482 840035 :: Mobile 07563 885388

Editorial and Contributions

Tel: 01482 840035

Accounts: Tel: 01482 840035

Website: www.cottinghamtimes.co.uk

E-mail: media@cottinghamtimes.co.uk

Cottingham Times is a totally independent publication.

The views expressed in the Cottingham Times are not necessarily those of the editor. Copyright of the entire magazine contents is strictly reserved on behalf of the Cottingham Times and the authors. No part of this magazine may be reproduced in any form without prior written consent of the Cottingham Times.

Disclaimer

Whilst every effort is made to ensure the accuracy of the dates, event information and advertisements, events may be cancelled or event dates may be subject to alteration and the Cottingham Times can accept no responsibility for the accuracy of any information or claims made by advertisers included within this publication.

Notice to Advertisers

Trades Descriptions Act 1968. It is a criminal offence for anyone in the course of a trade or business to falsely describe goods they are offering.



EAST RIDING ELECTRICAL
Local Time Served NICEIC Approved Electrician
Over 37 Years Experience



Full/part re-wires	Electric showers	Testing & inspection/certification
Fuse boards/consumer units replaced	Immersion heaters	Landlords electrical safety checks/certificates
Extra sockets & lights	Fault finding & repairs	Full insurance backed guarantee
Burglar alarms installed & maintained	CCTV installation/repairs	Domestic and commercial work
Smoke detectors	Outdoor lighting & power	
Electric heating	Electric vehicle charger installation	

Contact us for **FREE** quotations and advice:   

Tel: **Anlaby** 01482 571222
Beverley 01482 862220
Email: info@eastridingelectrical.co.uk
Web: www.eastridingelectrical.co.uk



★★★★★



Bridget FREER 07541 009321
bridget@bridgetfreer.co.uk

clinical hypnotherapist

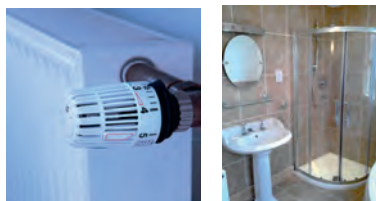
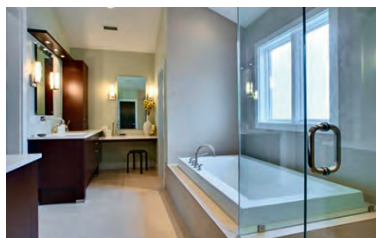
Lose weight with a
Virtual Gastric Band

Smoking: Stress: Phobias

www.bridgetfreer.co.uk

Williams Plumbing & Heating

(Established over 35 years)



**Plumbing - Heating -
Bathrooms - Tiling**

Full Bathroom Installations

• Tiling • Electrics • Building Alterations • Joinery

Central Heating

• Full Systems • Boiler Changes

Plumbing and Gas

• Gas Fires • Servicing to all Gas Appliances



**Accredited Worcester
Bosch Installer**

Tel 882552 Mobile 07721 366343

Looking for Window Blinds?
All Types of Blinds Supplied - Vertical / Roller / Venetian / Roman



Conservatory Specialists

5YR Guarantee
ON ALL PRODUCTS

UKBlindsdirect
www.ukblindsdirect.com
info@ukblindsdirecthull.co.uk

ALL blinds Measured & Fitted **FREE**
Call us for a no obligation quotation
01482 840238

Smiths
animal and pet supplies

40 YEARS SERVING YOUR PETS

72 Castle Road, Cottingham, HU16 5JG
Telephone: **01482 843631**

We now deliver around Cottingham and surrounding area free of charge. Please contact the above number for further details.

Stockists for all leading brands for dogs, cats, horses and small animals. We also have a large stock of wild-bird feeders and seed.

We will be open again to customers from Monday, 15th June. Social Distancing will be operating. Please do not come in if you have any symptoms of Covid 19.

**Remove the doubt.
We'll make sure that you are properly covered**

Call 707 800 and ask for :
Sally, Chloe or Karen
or pop in at
97 King Street,
Cottingham

**Home Insurance
Motor Insurance
Travel Insurance
Funeral Plans**



Hedon Insurance
Serving East Yorkshire for 50 years (1969-2019)

Hedon Insurance is Authorised & Regulated by the Financial Conduct Authority.



David Whincup 1940 - 2020

David Whincup who previously owned *Cottingham Times* along with Godfrey Burley, died in April of Covid-19 in the Hull Royal Infirmary.

David's charity work raised thousands of pounds for deserving causes in Hull and East Yorkshire with the Red Cross and the Haltemprice Lions.

David also organised many fund raising dinners for the Haltemprice Lions Club, and his commitment helped to secure the support of many other businesses and prominent individuals as he attracted some of the biggest names in sport.

David was known for his enormous energy and dedication, always striving to make a positive impact, however his proudest achievement was his family.

He was a kind and pleasant person and was well liked by everyone that met him. Everyone admired and respected him. He was a devoted family man, a true and loyal friend to many, and a true gentleman. He will be sadly missed.



Cottingham man Lee Shipman successfully gains a 2nd Dan Black Belt in Karate

Cottingham man Lee Shipman a member of the Wilberfoss Wado Ryu Karate Club successfully gained his 2nd Dan Black Belt recently in Manchester at the BKA (British Karate Association) - members of the English Karate Federation. The Wilberfoss Wado Ryu Karate Club is run by Mike Lewis 6th Dan - Lewis said: "He has worked extremely hard to achieve this 2nd Dan Black Belt Grade.

The club combines judo and jiu-jitsu influences and full on self defence techniques as part of its Karate Wado Ryu training.

The club meets every Saturday morning at 10-30am within the Community Centre at Wilberfoss.

If anyone is interested (15+) in joining the Wilberfoss Wado Ryu Karate Club please contact Mike Lewis on 07904-653337.

Pictured from left to right are Brian Seabright, BKA Chairman, Lee Shipman and Mike Lewis 6th Dan.

**Front cover: Flax on Tranby Road Fields.
Photo: Paul Lakin.**

Puppets mean prizes! Beverley Puppet Festival launches online competition

Beverley Puppet Festival is now halfway through its ground-breaking online programme of puppetry activity videos for all ages. Photos and videos have been flooding in from audience members young and old, who want to share the puppets they have made.

Now the Festival has launched a competition for all those creative puppetry fans out there. Prizes for both the adult and a kids/family categories are two passes for the next live festival which will be held in Beverley in 2022. There are additional prizes of branded Festival tote bags and camping cups for the best submission for each of the 25 workshop activities.

To take part, all you need to do is submit pictures or videos (of up to 2 minutes) of your creations based on any of the festival activity videos.

Don't worry if you missed any. All the subtitled activity videos will remain available online at the website <https://www.beverlypuppetfestival.com> and you can see the puppets and puppetry performances that have already been submitted there as well.

The competition will remain open until Sunday 19 July, a week after the last video activity is posted on the website. The winners will be announced on the following Saturday 25 July.

So get online, get crafting, photographing and filming, and send in your creations for a chance to be part of this year's exciting activities and be the lucky winner of your free pass to the Beverley Puppet Festival, back live and in person in 2022.

**Four Generations,
giving 125 Years of Family Service**

Herbert 1870-1962	Eardley 1908-1986	Geoffrey 1939-2015	David 1964
----------------------	----------------------	-----------------------	---------------



H. KEMP & SON LTD.
FUNERAL DIRECTORS
(ESTABLISHED 1893)

Golden Charter
Funeral Plans



- Funerals Respectfully Conducted
- 24 Hour Out of Hours Service
- Free Advice and Support
- Private Restrooms
- Pre-Paid Funeral Plans Available
- Finance Options Available



Tel: 01482 844695
www.hkempandsonltd.com

259 Hallgate, Cottingham, East Yorkshire, HU16 4BG
Fax: 01482 433898
Email: hkempandsonltd@gmail.com



Yorkshire Accountancy

**Quality Accountancy Services
at Affordable Prices**

- ✓ Annual Accounts
- ✓ Tax Returns
- ✓ Bookkeeping
- ✓ Management Accounts
- ✓ VAT Returns
- ✓ Payroll
- ✓ Company Formation
- ✓ Startup Advice





www.yorkshireaccountancy.co.uk
info@yorkshireaccountancy.co.uk
01482 845 750

Get the *Wow Factor* **with COLFAX WINDOWS**

upto
55% OFF

**WINDOWS
AND DOORS**



- Extensive Range of Composite Doors
- Large Indoor Showroom
- Large Outdoor Showground
- Planitherm Energy Saving Glass
- Open 7 Days a week



45% OFF

**CONSERVATORIES
AND ROOFLINE**

**0% INTEREST
FREE CREDIT**



For a no obligation free quotation
Call 01482 879077
or visit us online
www.colfax.co.uk
and click "online quote"

Leads Road, Hull HU7 0DE
Find us on  Follow us on 

COLFAX *Window Systems*

Over 28 years of excellence
WINDOWS ■ DOORS ■ CONSERVATORIES

Support the advertisers who appear within the Cottingham Times

www.cottinghamtimes.co.uk - July 5

Free bespoke cycle training on offer to East Riding residents

During the lockdown, many residents have been walking and cycling as part of their daily exercise. East Riding of Yorkshire Council is keen for people to continue as the restrictions are eased and its Road Safety Team is offering safe, free personal cycle training to support residents in this transition.

The sessions will help to give adults and children aged 11 and over the opportunity to gain the skills and confidence to cycle more regularly as workplaces, shops

and schools begin to reopen.

The council's Road Safety Team would like to see walking and cycling become a 'new normal' for people who only have short, daily journeys.

Principal road safety officer Steve Wigley said: "We've seen a lot of people across the county walking and cycling more regularly in the past couple of months.

"Now is the perfect opportunity for us all to really look hard at our future travel habits and to convert these leisure activities into active commuter journeys, reducing the overall number of vehicles on our roads, the current burden on public transport and dependence on cars, creating cleaner, less congested and more enjoyable environments."

Councillor Chris Matthews, portfolio holder for strategic management, said: "As we all know, daily physical exercise has a huge impact on improving our physical and mental health which East Riding of Yorkshire Council is extremely keen to encourage.

"We want to support more of our residents with the opportunity to access free cycle training giving them the necessary road skills to make cycling their regular way to travel."

For more information, advice or to discuss free cycle training requirements, please email: road.safety.training@eastriding.gov.uk.

A Bespoke Sofa or Suite designed by you, built by us

For 35 years we have been turning people's furniture dreams, into reality! A unique piece of furniture that fits your home perfectly.



Hannam Upholstery Company

Hand-built furniture that carries a 10 year frame guarantee

1b Main Street, Willerby, East Yorkshire HU10 6BP.

Tel/Fax: (01482) 658787

Find us on Facebook and Twitter



*For when it's time to make plans,
we can help with...*

- Conveyancing • Family Trusts
- Estate Planning • Wills
- Lasting Powers of Attorney
- Commercial Property

Jane
Brooks
LAW

Hedon 01482 893366
Cottingham 01482 848101

13 St. Augustine's Gate, Hedon, HU12 8EU
112 King Street, Cottingham HU16 5QE

www.janebrookslaw.co.uk

East Riding Leisure's new You Tube channel proves popular

East Riding Leisure's new You Tube channel is proving popular, with around 450 subscribers, over 4500 views, and nearly 150 hours of watch time after just four weeks.

Subscribers can view vlogs, short workouts and full workouts. East Riding Leisure release two full workouts a week, alongside their shorter version classes and vlogs, delivered by their own

fully trained fitness instructors.

These include 30 minute, 45 minute and 60 minute workouts, offering a mix of cardio, strength, well-being and classes for those less mobile.

New workouts premiere every Tuesday and Thursday where viewers can chat and ask questions with instructors online, all delivered by fully trained instructors, and all free of charge.

More content is being added regularly, so keep checking the page for new classes and updates at: <https://www.youtube.com/channel/UCIwq6JU9fUBIH1EKTvYb6EA>



QUALITY KITCHEN MAKEOVERS

by simply replacing the doors and worktops
NOW OPEN AND FOLLOWING ALL COVID-19 GUIDELINES
THE UK'S #1 KITCHEN MAKEOVER EXPERTS. EST. 1999

20% OFF EXTENDED TO JULY
T & C's APPLY

PLEASE CALL FOR SHOWROOM OR HOME APPOINTMENTS
DREAM DOORS
 NEW LIFE FOR OLD KITCHENS
www.dreamdoors.co.uk

40 Belprin Park, Swinesthorpe Lane, Beverley, HU17 9LN
 Call us now for a free estimate:
01482 861 653

DO YOU DREAM OF A NEW KITCHEN?

From simple door replacements to complete fitted kitchens

Fully installed by local professionals in just a few days

Choose from a large selection of doors, worktops and appliances

90 showrooms nationwide

Checkatrade.com
Where reputation matters
AVERAGE SCORE 9.7/10

STROUDS

of Cottingham

Handbags, Wallets, Purses, Accessories and much more

Gifts to suit all ages & budgets

Find us at: 149 Hallgate, Cottingham, HU16 4BB

Telephone: 01482 845 600

Website: www.stroudsbags.co.uk

SMART REPAIRS

Bumper Scuffs :: Smart Alloy Wheel Repairs :: Power Polish Summer Waxings :: Headlight Polishing

Protect your car with our Summer Waxing! £80

Pictured is an example of a Smart Repair
 "You would never have known it had happened!"

Unit 11 Station Road, Cottingham HU16 4LL
Telephone 01482 840465
 email: john.allen@jjsmartrepair.karoo.co.uk

Find us on **thomsonlocal.com**

Like us on Facebook

Support the advertisers who appear within the Cottingham Times

www.cottinghamtimes.co.uk - July 7

Cottingham Parish Council



Welcome to our section of the *Cottingham Times* that keeps our residents updated with some of the projects that Cottingham Parish Council is involved with.

- **Word from the Clerk**

What unprecedented times it has been since the last edition of the *Cottingham Times*. From all of us at the Parish Council we hope you've stayed safe and well. If you do need assistance at this time the East Riding support hub is the best place to contact on 01482 393919.

Our office remains closed to the public and, as yet, we do not know when we are reopening. We will, more than likely, be taking our lead from the East Riding Customer service centre though this is subject to change. You can still contact us via email and telephone (01482 847623)



Matthew Kay, Clerk to Cottingham Parish Council
clerk@cottinghamcouncil.org

Cottingham Day and Cottingham Christmas Festival

Unfortunately, the Parish Council has taken the decision to cancel both of its events this year due to the ongoing coronavirus situation. Whilst Christmas seems a long time away the Parish Council needed, for organisational reasons, to make the decision now and felt it best to be cautious given the potential for a second wave, especially over winter.

We hope to return in 2021 with a large Cottingham Day on Independence Day, 4th July.

CCTV

One piece of good news is the Parish Council have agreed to an upgrade of the CCTV system in the village centre including the installation of ANPR cameras. This work is due to begin in mid-July.

WHY GREY MATTER COUNTS

WHEN CHOOSING YOUR PERSONAL INJURY SOLICITOR



**Local personal injury solicitors,
Helen Drewery and Debbie Schofield, have
over 55 years' combined experience of
obtaining compensation for people injured by
accidents or asbestos related disease.**



As such, they are well placed to deal with all types of personal injury claims, from those that cause problems for a matter of months to those that involve life-changing injuries such as brain injuries, back injuries, amputations, industrial disease or other trauma.

Indeed, Debbie's decision to practice in personal injury law was made after she suffered serious spinal injuries in a car accident in the 1990's, "Such gave me an insight into the difficulties an injured person can face such as trying to do everyday tasks, worries about losing your job and financial strains. It was important to me to have a solicitor who was knowledgeable and committed to helping me."

Helen, heads up Graham & Rosen's personal injury department and has over 30 years' experience with particular expertise in securing compensation for motorcyclists, cyclists and those injured in work accidents. Over the years, her determination has won millions of pounds of compensation for local people and she has fought hard to win claims which other lawyers have declined or which have been heavily contested.

She says, "I am proud that our personal injury team has such a wealth of experience to offer to our clients and that we provide a caring, bespoke service for local people who have the misfortune to suffer injury through no fault of their own."

**GRAHAM
& ROSEN**
S O L I C I T O R S

01482 840201

www.graham-rosen.co.uk

Cottingham: 2-4 George Street, HU16 5QU

Offices also at: 8 Parliament Street, Hull, HU1 2BB Telephone: 01482 323123



Quality Water is our Business

Hard Water Horrors ?

Fitting a new kitchen or bathroom is often an occasion that gets people thinking about protecting their planned investment from the ravages of hard water; limescale, soap scum, streaks and spotting . . . the list goes on.

After all the effort and cost of selecting and fitting your new units and appliances its only natural to want to keep them sparkling and pristine and the one guaranteed way in our hard water county is to find the correct water softener for the property and get it installed as soon as possible.

Immediately after it is installed, a professionally specified and installed unit will protect plumbing, showers and appliances and keep everything at peak efficiency and performance year after year.

Amazingly the softener doesn't stop there, it will also undo the previous years of scale build up in existing plumbing and appliances and over a period of 12 months or so it will gently dissolve away the limescale.

Cleaning and care for kitchen and bathroom is transformed with a softener; no need for harsh chemicals or scrubbing and elbow grease; a rinse and wipe down is all that is needed.

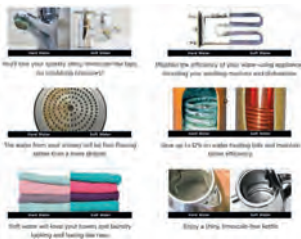


How will I find room for a water softener, they are huge aren't they?

Well, yes they used to be and indeed some of the older styles and more basic "builder grade" softeners still available are on the bulky side, however the good news is that there are now compact, non electric "consumer range" softeners that are the size of a tower computer, superbly efficient and stylishly designed to blend in.

Will we need plug sockets and a degree in computers to operate it?

In a word, no. The modern softeners no longer need electric power, they are kinetically powered by water flow and are pre set by our skilled installer to give perfectly soft water all of the time, no dials to set or flashing lights to look out for, its all perfectly simple, perfectly soft.



I don't want to be moving big heavy bags of salt around, has this been improved?

Yes indeed it has, I'm pleased to say, compressed 4kg Salt blocks are now available for certain units, which makes storing and replenishing salt much easier and salt can be delivered direct to your door or picked up from our Hull store as required. All the above benefits of a

softener will not be at the top of most long term softener owners list of reasons they would not be without theirs, they almost all say it is the luxury of bathing, showering and washing in the superbly soft water, not to mention the super soft fluffy towels that are the product of softened water laundry.

For more friendly, unbiased advice and information, just call Dave Parry at:



**GREENS
WATER
SYSTEMS**

647 Anlaby Road, HULL HU3 6SX
please phone to check opening hours

Telephone 01482 351 769

email: d.parry@water-systems.co.uk

visit: www.water-systems.co.uk

- for Water Softeners, Salt, Quookers, Water Filters, Taps and Cartridges

East Yorkshire launches busy bus checker to help customers plan their bus travel

- East Yorkshire has launched a busy bus checker to help customers plan the best time to travel on bus services.

- 'When2Travel' offers dynamic, colour-coded bus timetables that show seat availability on services, giving customers who need to travel the confidence to plan bus journeys.

- Passengers can also track buses live on the company's website, to see how busy they are in real-time.

- The app and website feature help passengers avoid busy times whilst capacity is reduced to enable social distancing.

East Yorkshire has launched two innovative travel tools for customers. Along with social distancing, wearing face coverings and enhanced cleaning, the new tools aim to give people confidence to use buses as customers return to work and school.

Customers will be able to use the 'When2Travel' tool when planning their journey, to see how busy a journey usually is using a sliding scale from green (very quiet) to red (very busy). They will also be able to track a specific bus in real-time, to see how busy the bus actually is on the day.

The second tool, a live bus tracker, uses information coming from the bus's ticket machine to see how many people are on a bus in real time, giving a live update as to how busy a specific bus is at that time.

Current social distancing requirements have reduced the number of people buses can carry. A double decker bus that

Continued on page fifteen

EVERY THURSDAY

**Do All Your Shopping
in Our Friendly Environment**

**Fruit & Veg, Fashions, Hot Food Take-Away,
Home Baking, Underwear, Tights, Socks, In-Soles,
Fish, Pet Food, Second-hand Books, Plants,
Flowers, Artisan Bread, Bags,
Scarves & Hats, Cheeses and Butter,
Sausages, Jewellery,
Garden Ornaments,
Charity Stall and much more**

**COTTINGHAM
MARKET**
THE GREEN, COTTINGHAM



CHRIS LEE
CARPETS & FLOORING

- Expert fitting service
- Uplift & disposal
- No obligation quotes
- Furniture moved
- Competitive prices
- Mobile showroom

Call 07860 123 015 or 01482 842265

Unit at Station Yard, Cottingham, By Appointment Only

Hear **CLEARLY** again...

Never miss out on the sounds you love

with the latest comfortable and invisible hearing aids



FREE
HEARING
TESTS

INVISIBLE
RECHARGEABLE
& SPECTACLE
HEARING
AIDS

WAX
REMOVAL
SERVICE

BRING THIS
ADVERT IN TO
CLAIM YOUR
**SPECIAL HEARING
AID DISCOUNT***
or quote ref
COTI

- ✓ **EASY** parking
- ✓ **HOME** visits available
- ✓ **FREE** aftercare
- ✓ **5 YEAR** warranty*
- ✓ **5 YEAR FREE** batteries*
- ✓ **INDEPENDENT** family business



Hearing aids don't have to be seen!



HULL hearing CENTRE
independent hearing aid audiologists

**TROUBLE HEARING THEN
CONTACT US TODAY!**

www.hullhearingcentre.co.uk

Clare House, 8-10 Baker Street, Hull HU2 8HP

t: **01482 22 22 04**

**HOME & SMALL BUSINESS
COMPUTER SERVICES**

PC/LAPTOP SALES | REPAIRS & INSTALLATION
WIRELESS NETWORKS | STRUCTURED CABLING
DATA RECOVERY | VIRUS REMOVAL
INTERNET | EMAIL SETUP
HOME & OFFICE SUPPORT

**Call Steve Blake on
847711 & 571100
www.blakeits.com**

INSURED
CAR CHECKED
Microsoft
CERTIFIED
IT Professional

EXPERIENCE
25
YEARS
Microsoft
CERTIFIED

Want to get creative?

Thread and Press

Creative classes for adults & children

- Sewing
- Machine embroidery
- Pattern cutting
- Printmaking
- Screen-printing
- ...and more

www.threadandpress.co.uk
07547 663453

**HEAD CANDY
Hair by Hannah**

So you're all thinking
"Not another hair salon", well fear not
as of April 2020 Maxine-Rae of
Cottingham, an already
established hair salon in the
village will become Head Candy.
After many years of
Hairdressing Maxine-Rae will be
hanging up her scissors for
retirement and handing over the
salon to Hannah one of her
current senior stylists.

Hannah has worked within the salon for 12 years and
has over 15 years experience. She can't wait to
welcome clients old and new to her salon and is very
excited about her new adventure.

Hannah will be joined by current employees Emma
and Rene so it will be business as usual providing the
same fabulous service and warm welcome.

**214 Hallgate, Cottingham, HU16 4BD
01482 843629**

12 July - www.cottinghamtimes.co.uk

Wordsearch - Gardening

Can you find the hidden words. They may be horizontal, vertical, diagonal, forwards or backwards.

F S W H E E L B A R R O W W H G E G R
U P E G S P E T U N I A S S N F N R T
C A G O R T L S O I L O C I N O W A U
H D H R R E L R O W S A T O M A E K L
S E R O O A E S S E B N I E M A E E I
I S W C U W F N S D A T R N E P L B P
A E C N U O E O H L L U O G N O O S S
L L N A I L R G P O T O N M V E U S F
P A B R L N T M N L U A G E A N I L T
I I E E O I I I U I R S G I S T O B S
N N E T C A L C V D G E E H R W O S E
W N T A C R I I Y A T G I E E A E E I
H E S W O T Z H E A T N I R D O M V S
E R G A R D E N B S E E S D H S S O I
E E O O B D R L O E C I N A G R O L A
L P H S S D E E W G N I X A L E R G D
L E V O H S A E P S M U I N A R E G H
O P P I T C H F O R K E C A R R O T S

Find the words in the letters above:

Annuals, Beans, Beets, Biennial, Broccoli, Carrots, Compost, Cultivate, Daisies, Digging, Fertilizer, Flowers, Fuchsia, Garden, Geraniums, Gloves, Gnome, Greenhouse, Grow, Hoes, Horticulture, Hose, Hydrangea, Lilacs, Lilies, Marigolds, Organic, Peas, Perennial, Petunias, Pinwheel, Pitch Fork, Planting, Rain, Rake, Relaxing, Roses, Rows, Seeds, Shovel, Soil, Spade, Sunshine, Tomatoes, Trowel, Tulips, Vegetables, Water, Weeds, Wheelbarrow.

Wordsearch courtesy of <http://www.puzzles.ca/wordsearch.html>

Sudoku No. 158

This is an easy challenge this month - Answer on page 29

					8		7	
			5	9				
		1					3	
			6	7		9		
		7	8		9		5	1
					5		4	6
	6	5	1			2		
	7							
3	4	2					9	

Support the advertisers who appear within the Cottingham Times

MARIONOWENTRAVEL

Firstly we hope you are well and keeping safe.

We have green shoots, new bookings are rolling in but we are still taking baby steps, hoping travel will start later this month.

We are open for business as usual

Although our office door has been closed we have remained open working remotely. July, we are welcoming you back to the office by appointment only, Monday to Friday between 10am and 2pm and telesales continue outside of these hours.

I have been delighted with the new bookings we are receiving. It is nice to have something to look forward to. If you are pondering on making a booking don't hesitate to call 07850 694101, I will be happy to talk your through your ideas.

CRUISE & MARITIME include sailings from Hull. Summer 2021 sailings are on a 2-4-1 offer which ends 31 July 20.

We have a new special mini cruise departing 29 April, the price of this 2 night cruise is cheaper than a Dutch Dash!

Regent 10th May 2021 have a super cruise sailing to/ from Southampton. A wonderful all inclusive, all **SEVEN SEAS CRUISES** suite experience awaits from just £4999. If you do the maths take a suite on any on other cruise line and add in the extras included this is an amazing price.

Georgia & Armenia our special departure has been moved to September 20th 2021. We have just a few places left for this small group tour, price £1899. Call for further details.

Many of our Marion Owen Travel Tours have been transferred to 2021 hence, we have limited seats available so don't delay book today. If we get the green light to operate before Autumn I will be popping in some extra departures this year.

The Edinburgh Tattoo will celebrate its 70th Anniversary now in 2021. All but 4 guests transferred, this tour is teamed with Kynren. We are also picking up in Market Weighton & Pocklington as well as our normal places on this tour.

I am delighted to inform you that our UK coach holiday travel insurance rates have not increased in price and valid for issue until March 2022 with no age limit or medical exclusions.

UK HOLIDAYS : we can offer a huge choice of self catering accommodation travelling in your own car, Motorhome hire, boats on the broads at great prices direct from the boat yard.

CAB has put a wonderful selection of coach tours together for 2021 including Cottingham, Hull & Hessle as departure points. Call me for bookings and further information.

Remember we can book you on any holiday.

We are totally independent & 100% owned by Marion.

With our wealth of first hand knowledge travelling around the world by land, sea & air with the answers to make your travel simple & hassle free this leaves you to look forward to and enjoy your holiday. All you need to do is pick up the telephone and we can get your next holiday booked. It is always good to talk and we look forward to creating your special memories when we book your next holiday whether a break in the UK, Europe or a far away holiday to a corner of our world. Keep safe everyone, be positive and lets us look forward to the time we can once again start to explore our world and enjoy wonderful adventures. With warm wishes **Marion**

Our very own exclusive holidays by coach, experience the difference

It is sad not to be travelling with our coach family at the moment. Let's look forward to re uniting soon.

01 Oct	WW1 Ypres Salient & the Somme - unique tour 6 days	£ 595
20 Nov	Warner's Alvaston Hall 3 nights Dinner B&B	£ 299
26 Nov	Chatsworth House & Christmas Market	£ 49
03 Dec	Thursford Christmas Spectacular best seats 1 night DB&B	£ 189
05 Dec	Thursford Christmas Spectacular best seats 1 night DB&B	£ 189
21 Dec	Polar Express - premium package themed train day outing	£ 79
NEW 2021 departures now available to book - limited places		
19 Jan	Boundary Mills for the January Sales	£ 20
21 Mar	Devon & Cornwall National Trust - 6 days half board	£ 665
15 Apr	Rhine & Moselle River Cruise Amsterdam to Basel 10 nts non flying via P&O North Sea Ferries price (8 seats) from	£1795
27 Apr	Bakewell + Peak Rail afternoon tea day outing	£ 55
29 Apr	Marco Polo 2 night cruise Tilbury-Amsterdam- Hull from	£ 169
16 May	Well Dressing in Derbyshire	£ 30
23 May	Llandudno - 5 days at the Tynedale half board (4 seats)	£ 495
10 Jun	Faroës, Shetland, Orkney & Mull 8 night cruise from Hull to Liverpool with a great excursion day back to Hull from only	£ 679
24 Jun	Tenby & South Wales 6 days fab hotel & itinerary (2 seats)	£ 720
05 Aug	Kynren & the Edinburgh Tattoo 3 nights in progress	£ 499
05 Sep	Shetland explorer - 8 day great itinerary WAIT LISTED	£1015

We have regular pick up points for our tours but optional travel from your door is available please ask for details

Why not join Marion on our Escorted tour by AIR? Treasures of Georgia & Armenia

21st September 2021, 11 days £1899
Single supplement £250

Fully guided, explore these countries at the crossroads of Europe & Asia. This region of the Caucasus hosts the worlds oldest Christian nations and is a cultural treasure trove of UNESCO sights and stunning scenery
Travel from your door, flights from Manchester



JERSEY From your door.

The island offers fabulous beaches, great walking opportunities, duty free shopping & is steeped in history.

7 nights half board

Saturdays flying from Humberside 2021

08 or 22 May 2021 - £719 per person 2 sharing

19 June, 10 July & 04 September 2021 £769 pp 2 sharing

Solo travellers enjoy a double room for sole use + £200

For other dates inc possibly Sept 2020 & Hotels please ask



For bookings & info Tel:07850 694101 www.marionowentravel.com

Sorry for the inconvenience of our office door at 23 Portland Street, HULL, HU2 8JX for the moment.

Prices shown subject to availability at the time of booking. Based on 2 sharing unless otherwise stated. Single travellers welcome please ask for prices.

Office hours: Monday to Friday 9am - 4.30pm : Saturdays telephone bookings only

July 2020

Support the advertisers who appear within the Cottingham Times

www.cottinghamtimes.co.uk - July 13



Salt City
UK

TABLET | BLOCK | GRANULAR

WATER SOFTENER SALT DELIVERED DIRECT TO YOU FOR LESS

Prices from £5.00 including VAT and delivery

Contact us today to book your delivery

info@saltcityuk.co.uk | saltcityuk.co.uk | 07703 846 409

open 7 days a week from 7am to 6pm - weekend deliveries available

kitchensolutions

Door and Worktop Replacement Specialists

- Over 80 door styles and colours
- Made to measure, Any size doors,
- Worktops, Sinks & Taps, Appliances
- Tiling, Plumbing, Electrical work
- All work guaranteed

Transform your kitchen at affordable prices

Free no obligation quote call **01482 841551**

www.kitchensolutions-hull.com

GAROLLA

ROLLER SHUTTER DOORS

Great For:
Space Saving
Kerb Appeal
Ease of Use
0800 468 1982

THERMALLY INSULATED ELECTRIC GARAGE DOORS

Garolla can save a lot of space inside your garage. Rolls up vertically into a box. Takes only 8 inches of headroom! Opens vertically so you can park up close to the door. Remotely open/close the garage even from inside your car.

Acoustic & Thermal Insulation

Brush Sealed Rails

Pay on Completion

Two Remote Controls

18 Colours Available

CE Approved

Free Disposal of Old Door!

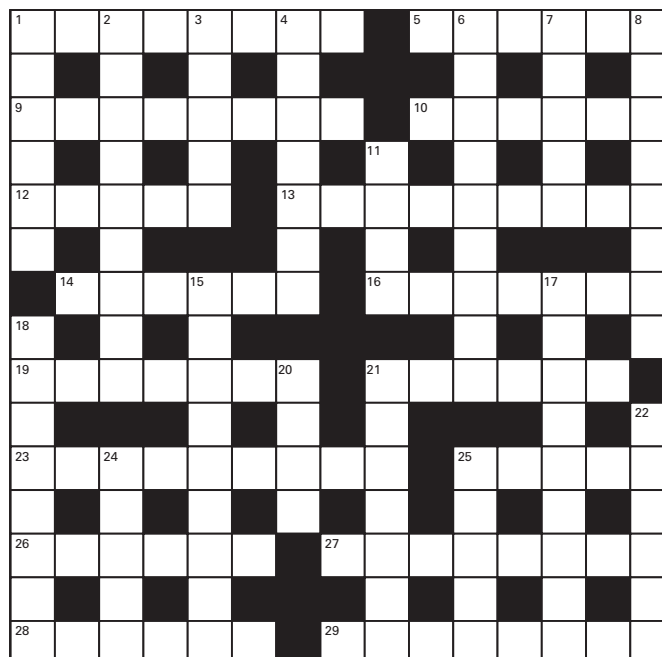
LIMITED OFFER - was £1354
NOW ONLY £895 INC. VAT & FULL FITTING
MADE TO MEASURE, CALL US NOW!

01482 910 029 07537 149 128

Phone Lines Open 7 Days a Week

- Offer valid for openings up to 2.6m wide & inc: 2 Remote Keys, 55mm White slats, Internal manual Override -

Crossword - Solution on page 29



Across:

- Not plural (8)
- A type of inflorescence (6)
- Aerialists (8)
- Bovine mammary glands (6)
- Secure or fasten (5)
- Earnestly (9)
- Ape or monkey (6)
- Pins (7)
- Astounding (7)
- Attractiveness (6)
- A piece of numerical data (9)
- A tree of the genus Betula (5)
- Titillating (6)
- Ball-shaped (8)
- Sprinkle with moisture (6)
- A unit of computer memory (8)

Down:

- Not readily available (6)
- Standardize (9)
- Pertaining to cities (5)
- Craftsman (7)
- A nearby galaxy (9)
- Smooths (5)
- A writer of literary works (8)
- Smile (4)
- Revering (9)
- Not figuratively (9)
- Pet rodents (8)
- Newts (4)
- Rod-shaped bacteria (7)
- An impetuous rush (6)
- Fragrance (5)
- Hindu for "Mister" (5)

Crossword courtesy of www.crosswordpalace.com
Support the advertisers who appear within the Cottingham Times

Continued from page ten

could normally take up to 75 people is currently limited to about 20 seats. With more people expected to use buses as lockdown eases, these two new tools will help customers plan journeys to workplaces and other destinations based on when seats will be available. Journeys home can also be planned around seat availability, taking away worries of long waits or of being left stranded.

This will also help East Yorkshire plan future timetable changes based on emerging demand as the bus industry faces the challenges of changing travel patterns, balanced with capacity restrictions due to social distancing.

East Yorkshire Area Director Ben Gilligan said:

"We know that as we start to come out of lockdown the priorities for our passengers are clean buses, social distancing, and knowing they can get a seat on the bus. Our new busy bus checkers help people plan their journeys with confidence, and enable passengers to avoid buses at busy times, helping keep seats clear for key workers."

"Employers can also help by allowing their workers to match their start and finish times to when seats are available on buses."

"With social distancing, our buses can carry fewer people, so we also want to remind people they should only travel if their journey is essential, to keep buses clear for those who need them most."

The new tools are available now for checking all journeys across the East Yorkshire network.

See the capacity checking tools now at www.eastyorkshirebuses.co.uk. Those without access to the internet can get the same information by ringing BusLine on 01482 59 29 29, open Monday-Friday, 8am-1pm.

Do you still think your financial position is solid?



Andrew Walters

"We've all just been through a period of enforced isolation. Isolation inevitably leads to reflection and many people, it would seem, have realised that their finances were not quite as robust as they would have liked. It's unusual that we cannot improve things - so, why not give me a call and start the process off?"



ICF Financial Services Ltd
97 King Street, Cottingham, HU16 5QF
also in Melton & Bridlington
Pop in or call (01482) 638 300

www.icf-fs.co.uk

ICF Financial Services Ltd is authorised and regulated by the Financial Conduct Authority

Planning for Retirement

Investment Management

Life Assurance

**Advice on Mortgages &
Re-mortgages**

Buy to Let loans

Development Finance

**SUPPLIERS OF QUALITY BESPOKE
KITCHENS, BEDROOMS & BATHROOMS**

30-32 Northgate, Cottingham. Telephone 01482 844114
Fax: 01482 847828 :: www.inputkitchens.com
sales@inputkitchens.co.uk

**input
kitchens** of Cottingham

Facebook, Google+, Twitter, Instagram icons

Support the advertisers who appear within the Cottingham Times

www.cottinghamtimes.co.uk -July 15



A Virtual View from the Artmarket

When creative minds join together, amazing things happen. Here at the Artmarket Gallery we have introduced a brand new and innovative way to shop online.

We understand the hardship of envisioning the art you love on your wall, and the difficulty when seeing the finer details through a photograph online, so we have presented an illusive buying service, Virtual Viewing. Where we bring the Artmarket Gallery to you.

By utilising our digital team, it is still possible to view the artwork you love as if you were to visit the Artmarket Gallery. Through personalised videography and the extraordinary talent of superimposing, we can place artwork you love onto your very own wall (or walls) at home. Virtual Viewing is a unique and bespoke service



and we are truly dedicated to maintaining the impeccable 5 star service you receive during your visit to the gallery.

How does it work? It is simple! Browse our website and find the artwork you love. You will find a "virtual viewing" button across all of the artwork on our site, this takes you to a short and simple contact form where you have the opportunity to include a message to notify our team of any particular queries you have. If you can't decide between a collection of pieces, or perhaps you're unsure what colour palette would best suit your room, just add a message to the form and our expert Art Consultants will help you with all of your requests.

We will personalise your video from inside the gallery, showcasing your artwork of choice. This video allows you to see the stunning detail our artists create and to find out more about the artwork you are lusting after. You also have the option to upload an image of the wall (or walls) you wish to place your art on, and we will superimpose the art onto your wall so you can get a real feel for how it will look in situ.

Everything will be sent to your inbox via a link that will take you to your very own Artmarket Gallery page; a portal where you can see your video and images all in one place. If you like what you see then buying is easy! Simply press the buy it now button and follow through

to our checkout. This incredible service will help you get a true feel of the artwork you are interested in and takes online shopping to another dimension.

Scan the QR code through your smartphone camera to get a taste of our Virtual Viewing buying experience.

Art purchases are special, meaningful, and often gifted for celebratory birthdays, weddings, and other unique occasions, that's why we want to move forwards and offer an exceptional service no matter where you are shopping from. So sit back, enjoying browsing our website, and get in touch with us... all the while you stay in the comfort of your very own home!

As the high street bustle returns and the government guidelines progress, the gallery doors are reopened and ready to welcome you back to your favourite stop for all things art! The gallery will operate primarily on an appointment basis so if you want to visit for a chat whilst you choose the perfect piece of art then get in touch with our friendly gallery team via galler@artmarket.co.uk or by telephone (01482) 876003. We hope to see you soon!

197 Hallgate
Cottingham, HU16 4BB

*Art*market

01482 876 003
www.artmarket.co.uk

Telephone: 01482 869111
info@roseskitchens.com



The Kitchen Factory
The Courtyard, Tokenspire
Business Park Beverley, HU17 0TB



**We are
observing
Social-
Distancing
Regulations**

Together we will design a beautiful kitchen

Roses will then project-manage your kitchen installation from start to completion



Our New 2020
Season Displays
Are Now Being Installed
In Our Showroom....
Why Don't You Come And Have A Look



Visit www.roseskitchens.com

To see our customers kitchens and read what they have to say about us



ON THE GRAPEVINE

WITH ROY WOODCOCK

Growth of wine sales during lockdown

Well, that's got to have been the longest three months ever and it's so good to be back writing about wine again. It's like things have returned to "normal", which, of course, they haven't, but at least we're beginning to see a little light on the horizon.

Perhaps it's allowed us to reassess what's important in life; I hope so. But neither should we feel guilty about enjoying small pleasures and if enjoying a glass of wine is amongst yours then I will raise a glass with you to "better times".

I read a really interesting article during lockdown compiled by the London-based research agency Wine Intelligence, which supports wine businesses, which said people have poured a glass of wine more often during the coronavirus lockdown.

A thousand people were surveyed and it revealed the number drinking every day had increased by five per cent with retailers reporting a sales spike normally only seen at Christmas. But if you, at this point, are saying "well, what do you expect" and "why did we need a survey to tell us what we already would have guessed" then I couldn't agree more.

But the interesting point as lockdown restrictions have begun to ease, was the suggestion that having adjusted the way we shop, the recent surge in online wine orders looks set to be sustained.

My sincere hope is that our local retailers - supermarkets and the specialists - will still be supported plus, of course, restaurants, pubs and clubs, who were not able to trade at all. Specialist wine merchants, and I'm thinking of outlets like Majestic and Roberts & Speight in Beverley, and House of Townend's Cellar Door at Melton, have battled through with delivery services and continue to do so. Their knowledge and advice is something not available so easily online.

The other interesting point I took from the survey was the suggestion that the UK wine consumer has, temporarily at least, reversed their long-established trend towards drinking less but better and is now seeking volume and value. On this latter point I will try to continue to search out some of the best wine deals for inclusion in this monthly column.

The glorious weather, certainly until the rains came in early June, meant that I was enjoying far more al fresco dining than would normally have been the case for April and May and also meant I was searching my "wine cellar" for bottles of rosé. For many of us, pink wine is a signal that summer is here.

From pretty peach to striking salmon pink, rosé is light, fruity and low in tannins making for a very quaffable wine and a great partner for light food, especially in the warmer weather.

Initially made popular by holidaymakers hopping to the South of France, for a long-time rosé was considered as a less serious wine. It has since gained in popularity as we have come to know more about the wine, whilst the quality and diversity of the rosés available has improved.

Today it's still impossible to talk about rosé without mentioning France. Provence and Languedoc-Roussillon still lead the rosé production but are no longer the only place to look. Recent summers in the UK have made possible a new wave of rosés from British vineyards with a lighter, refreshing style - a good reason to buy locally and to support the nation's winemakers.

Laurel Vines, at Aike, near Beverley, for instance, can supply a 2017 vintage Rondo Rosé (£9) that's always been the hit choice at wine tastings I've attended - it's a dry rosé wine with hints of rose flowers on the nose and delivering a fresh, fruity, taste with a balanced and clean finish. It makes a great accompaniment to seafood dishes or just quaffed on its own - preferably while relaxing on a summer's afternoon in the garden.

The Sargent family, who began planting vines in 2011 and have since gone on to pick up prestigious awards such as winemaker and grower of the year, have continued to supply free home deliveries during lockdown but have suffered the added blow of frost damage to the vines in May which could affect the grape harvest later in the year, so local support would, I know, be hugely appreciated.

Since early June, as lockdown measures were eased, they've also been able to offer a click and collect service - their wines include three whites and a red as well as the rosé. Visit www.laurel-vines.co.uk for more details, including contact details.

To finish this month, news that Stuart Shenton, manager of House of Townend's retail store, The Cellar Door, at Melton, is leaving after almost 10 years with the company, during which time the Cellar Door actually opened.

He wrote on his blog: "During my time here we have won Wine Merchant of the year for North East England four times. In 2017 we went one step further and won the Merchant of the year for the whole of the North of England. I am incredibly proud of those awards as they represent the hard work of everybody involved in our private sales team. We have always strived to be the best at what we do; sourcing incredible wines from all over the world and discovering some fabulous and unique parcels. Whilst I will not be there for the next chapter I know that the buying team will continue finding great wines."

His successor is Alexis Teillay, who joins from Winteringham Fields. Alexis has been responsible for shaping the restaurant's wine list, managing the restaurant and been a part of the team that has seen it awarded a Michelin Star.



BEST BUYS


**Yalumba The Y Series
Unwooded Chardonnay**

Where: Roberts & Speight, Beverley

When: Now, while stocks last
Why: I remain a great lover of Chardonnay, particularly unwooded ones, and this is a great example. Some subtle spices evident and that typical creamy fruit flavour shines through. Some great offers on the Yalumba series started last month - get them while you can.

£8.50 (was £9.99)


**Yalumba The Y Series
Merlot**

Where: Roberts & Speight, Beverley

When: Now, while stocks last
Why: This would be the red I would buy to partner the Chardonnay; 14 per cent alcohol but very food friendly - everything from a casserole to a pizza.

£8.50 (was £9.99)


Le Grand Ballon Rosé

Where: Waitrose

When: From July 8 - 28
Why: This pretty rosé is made by Thierry Delaunay in the Loire Valley. It has a salmon pink colour, and delivers delicious nuances of red fruits and spring flowers. Enjoy either on its own or with light appetisers.

£6.69 (was £8.99)


Canaletto Pinot Grigio

Where: Waitrose

When: From July 8 - 28
Why: An easy-drinking and elegant dry wine with floral notes and fresh flavours which provide a refreshing crisp finish. Ideal on its own or with creamy pasta sauces, fish dishes and white meats.

£5.99 (was £7.99)



Melanie Watson of Skidby Livery Stables with the latest of her monthly articles

www.instinctivehorsetraining.co.uk

Lockdown in my world of horse training and livery

Everyone knows the rules, we have all been impacted hugely by the onset of covid 19. Livery yards and horse training centres across the world are no different when it comes to applying all the protocols needed to stay safe and to have everyone around us stay safe too.

I had 2 training horses in just prior to lock down and we decided that because they came from so far away, and were both at crucial points in their training, I would continue with their training to achieve the desired goals.

I used videoing training far more as a tool in order to share the work as it was happening and to keep the owners well informed of progress. I have always filmed training horses for the owners records, and as something to look back on, only now with the travel restrictions this valuable tool became way more important.

When the owners did come over for training themselves, we all were able to keep social distancing rules in place successfully.

I had made a yard rule that only 3 people can be at my yard at anyone time, so "whats app" group messaging became even more valuable as the owners all booked convenient times to come over to their horses.

It has worked out well. There is myself and one member of staff on in the mornings and just myself in the afternoons, with a couple of owners. Apart from emergencies, both the vet and the farrier did not attend and inoculations lapsed, which is very annoying and ultimately more expensive but



we all understood that vets would be visiting vulnerable clients within their role so respect of others had to come first and foremost.

The farrier is now back attending as normal with the two metre rule in place as are the vets. Life is starting to get back to some sort of normal.

We have a hibiscrub wash and a clean towel for everyone to use before they enter the property and for when they leave to go home. Obviously the shared areas like the coffee station, fridge and mugs, are all sterilised with sprays and sterilising fluids. Basically we do what we can, when we can and so far it has been very successful.

Some of my owners locked down at home so we did not see them for weeks. Some would call in just to bring their horses feed or supplements and not actually enter the yard at all. The feed shops are all following strict protocols but thankfully have stayed open and accessible.

I have been doing far more video meetings in order to be able to help horse owners across the UK with problematic behaviours. Consulting like this is a great way to help and I always follow up on each call to see how life is progressing. Further support as owners implement management changes and start training in this new way of using applied behavioural science to modify behaviour and shape great new ones is always on hand.

I do hope life has been kind to your readers. There has been so much heart ache and loss UK wide, the countryside did not escape the horror. I am blessed to have kept my old mum safe but my heart is with all those who have suffered such personal loss.

Our bright light in all of this gloom was the arrival of out stunning colt foal early in May. He is a total pleasure to watch while he plays and explores his new world. I have named him Kouros as my last group of foals were all named after perfumes. His posh name is Dawn Kouros in honour of the most amazing very early mornings I had the pleasure of witnessing and listening to.



Support the advertisers who appear within the Cottingham Times

www.cottinghamtimes.co.uk - July 19



I can't believe that only a couple of months or so ago I was writing about the how much the life of a vet has slowly evolved over the years. It's Barbara Wynn, the vet, again, and I can honestly say since then I and all my colleagues have experienced a seismic upheaval in our working lives due to human coronavirus.

Along with other veterinary practices across the country, we now find ourselves unable to perform the routine face to face consultations we used to take for granted. The Government has, quite rightly, decided that human health must take priority at this time. However, after some lobbying, vets are still allowed to provide an emergency level of care for our patients, remote monitoring of the use of prescription medicines and some vaccinations and neutering where animal welfare may be compromised.

Under these new restrictions we are doing our absolute best to be here for you and your pets. Our branches are still able to take telephone calls if you are concerned about your pet or need medication. If necessary the receptionists will then arrange for a veterinary surgeon or veterinary nurse

to call you back for a phone or video consultation. Routine flea, worming and most other prescription medications can be posted out to you for a normal parcel fee. You can also collect medicines as long as nobody in your household is quarantined with Covid-19 symptoms. In this case please ask a friend or family member not living in your household to collect them for you.

The veterinary surgeons on duty will decide if your pet needs to attend the surgery and be examined. It is worth planning in advance for this eventuality if your household is quarantined or you are self-isolating at home. Discuss with family and friends if someone will be able or willing to bring your pet to the surgery if you are unable to do so.

The golden rule is always telephone the surgery first. In order to protect our staff as much as possible the doors of our surgeries are currently kept locked and no members of the public are allowed inside. If you need to attend then you will be told when and where to go, so listen to the instructions carefully. Knock on the door upon arrival or call us on the telephone. We will pass medicines out to you or take your pet into the building to be examined while you wait outside. Please be patient.

The current advice regarding Covid19 and pets in your home is precautionary only. If you show symptoms of coronavirus limit your contact with your pet as much as with other members of your household. If you are symptom free still make a routine of washing your hands before and after handling your pet and try to avoid them coming in contact with your face. When walking dogs, keep them on a lead and try not to allow them to interact with other dogs from other households. They may be able to transmit the virus on their fur in the same way as an inanimate object. It isn't currently advised to keep cats indoors if they normally go outside but be extra vigilant about hygiene if they do.

I suppose it only remains to say how incredibly proud I am to be working with an amazing group of colleagues who have stepped up and tackled what is an incredibly stressful and dynamic situation head on. All of us are committed to balancing the needs of human health with providing a level of service that does not compromise animal welfare. Stay home and stay safe everyone. Your pets need you to be there for them when this is all over.

Support the advertisers who appear within the Cottingham Times

Kingston
VETERINARY GROUP

Park Street - 01482 223688
Beverley Road - 01482 854422
Holderness Road - 01482 797007

Anlaby - 01482 655333
Cottingham - 01482 843210
Thorngumbald - 01964 301607

The Traditional Chinese method of Acupuncture treats the whole person, body and mind, and not just the symptoms

Traditional Chinese Medicine (TCM) has existed for over 4,000 years and is a comprehensive medical system with its own principles, diagnostic methods and therapies.

TCM views the body as an organic whole with a network of meridians connecting and co-ordinating the internal organs, Qi ('vital energy'), blood, body fluids, muscles, bones, tendons and the skin.

TCM also holds its central belief that health in all parts of the body is due to the relative balance of Yin and Yang. Yin-Yang theory forms the basis of TCM's holistic approach to health and disease and also offers practical guidance in the prevention and management of diseases.

TCM has two basic components - Chinese Herbal Therapy and Acupuncture.

The aim of Chinese Herbal Medicine and Acupuncture is to regulate the meridians or channels of the body to unblock the stagnation of Qi, as it believes that the disease is caused by the energy blockages within the body.

The channels are related to the internal organs, which, if out of balance, is another important factor in the cause of disease. Chinese Herbal Medicine and Acupuncture are used to correct this imbalance.

Chinese Medicine is, therefore, a truly holistic form of medicine, aiming at treatment of the whole body, rather than just the symptoms.

Problems and Diseases commonly treated by TCM

Skin Problems:-

Eczema, Herpes, Dermatitis, Psoriasis, Warts, Shingles, Vitiligo, Acne, Hair Loss, Itching, Athlete's Foot, and other Fungal Infections, etc.

Muscular, Neurological, Skeletal and Vascular:-

Arthritis, Sciatica, Back Pain, Lumbago (lower back pain), Frozen Shoulder, Tennis Elbow, Gonitis, M.E., Stiff Neck, Hemiplegia, Neuralgia, Facial Pain, Stroke, Sprain, Sports Injury, etc.

Internal:-

High Blood Pressure, Palpitation, Obesity, Ashma, Brochitis,



Headache, Dizziness, Migraine, Nausea, Vomiting, Gastritis, Colitis, Indigestion, Peptic Ulcers, IBS, Diarrhoea, Edema, Diabetes, Constipation, Haemorrhoids, Colds, Flu, etc.

Men's Problems:-

Ejaculation Praecox, Low Sperm Count, Impotence, Prostatitis, Sex Drive Problems.

Women's Problems:-

Irregular Periods, Infertility, Habitual Abortion, Anaemia, Menopausal Syndromes, Premenstrual Tension, Discharges, Fibroids, Cysts, Endometriosis, Morning Sickness, etc.

Ears, Eyes, Nose and Throat:-

Otitis, Tinnitus, Sore Throat, Hay Fever, Pharyngitis, Rhinitis, Sinusitis, Ear Infection, Viral Infection, Eye Problems, etc.

Cancer and Tumour:-

Herbal Therapy can build up your immune system to support any other medical treatment for more serious medical conditions.

Addictions:-

Tobacco, Drugs, Alcohol, Reduce Weight, etc.

Mental and Emotional:-

Anxiety, Depression, Stress, Panic Attack, Insomnia, Dementia, etc.

Herbgarden is situated at 10b Well Lane, Beverley, HU17 9BL. Just 20 yards round the corner from The Beverley Flower Company.

For further information and appointments, telephone 01482 888152, or call in at The Herbgarden, 10b Well Lane, Beverley, HU17 9BL.



HERBGARDEN
CHINESE MEDICAL CENTRE

*Acupuncture and
Chinese Herbal Remedies*

Free Consultation

15% OFF

First Treatment

New Clients Only

**Bring this Coupon with you
to receive your discount**

Member of ATCM
**Recognised by Most Private
Health Schemes**

**10B WELL LANE
BEVERLEY HU17 9BL**

TELEPHONE 01482 888152



Support the advertisers who appear within the Cottingham Times

www.cottinghamtimes.co.uk - July 21



"The Tooth and Nothing but The Tooth"

by
**Chris ' Dr. Smile
Maker' Branfield**

We're Back, but with a difference

Hello again, I hope you are well and staying safe.

Wow, what a challenging time we are in. Lots of businesses having to close down and do whatever they can to stay solvent, and then prepare to get back to work, but in a different way with limited capacity to engage with people face to face as we all need to social distance. Obviously, this impacts the ability to generate income even though the costs of running the business get more back to normal. Good luck to everybody in this situation.

Hats off to health care workers, carers and key workers who were able to work through all this. Thank you.

So, what happened to dentistry

Well, we were effectively ordered to close down at the end of March. We could only do the AAA (advice, analgesia and antibiotics) over the phone. People with severe toothache that did not respond to this couldn't be helped. It was awful and we felt like we were tied up in strait jackets. After several weeks the UDC (urgent dental centres) began to be set up to see urgent cases but only after they had one or two courses of antibiotics that had failed to solve the problem. I actually volunteered and did a day triaging patients over the phone at a UDC for free. Dental practices are now

allowed to open again as long as have new operating procedures, documents, training and correct PPE.

Safety First

Dentistry has always been about safety first. We have been wearing PPE (more 3 letters) since the 80's when HIV came along. We wipe everything down after patients with bacterial and antiviral agents. There is no evidence of dental workers having higher incidence of COVID infections even though we were working on full throttle up to the end of March. In my opinion its safer than an outing to the supermarket. I walked out one shop because there was family of three with a kid in a trolley who was coughing all over the place!!!

Clean Air

The concern in dentistry is about aerosols. However, our aerosols (small particles) are made from purified water with antimicrobial



ingredients in and we use High Power Evacuation or Suction (HVE or HVS). Even more three letters.

I've been back working this week mainly dealing with urgent care. As you'd expect I've researched the heck out of all this as I'm a dental geek. I have bought two air quality monitors and been measuring the invisible particles in the air in my treatment suite. When we've been

doing dental treatment the air quality actually improves with fewer small particles in the air compared to the ambient pre treatment levels. We now have extra suction units outside the mouth with filters and these improve the air quality further. I'm just saying this to hopefully put your minds at rest. In addition to this we are advised to leave a fallow time in the treatment suite to allow air changes to occur before cleaning. Dentists with just one treatment room my only be allowed to see a patient 90 minutes after a procedure. Like a say challenging times.

All Different

Social distancing and clean hands are key to safety. So, we are doing as much as we can remotely. This includes making appointments, taking payments, filling in medical documents digitally as well as signing consents. As much as possible our patient lounge is out of bounds if it can be helped, and people are checking in via text from cars in the car park then called to come to the door. Here they are met by a nurse in full PPE including mask, visor and apron to have a temperature check and hands sanitised. The aprons are like wearing a shower curtain. It's all working well as we've now got into a rhythm with it all. We are starting off slow-ish and gauging things before we bring back more team members. It's mainly me and a smaller team working at the moment as we test the water as I don't cost anything. It's good to be back helping people. I'm hopeful to have more team members doing what they do best soon. We are looking forward to seeing you.

Chris

Until next time. Take care and be good.

Chris Branfield is Principal Dentist at Castle Park Dental Care, Castle Villa, 28 Castle Road, Cottingham, telephone 01482 772550. He has been in dental practice for 27 years and has a special interest in Life Changing, Pain Free Dentistry with Dental Implants, Teeth Straightening and Cosmetic Dentistry. And, not only that Chris is founder member and trustee of Dental Mavericks charity- ending the daily dental pain of Moroccan kids. For more patient success stories and Chris' Humanitarian work go here now www.castleparkdental.co.uk

Support the advertisers who appear within the Cottingham Times

Are You Fed Up Of Sleeping In The Spare Room?

Getting Elbowed In The Ribs?
Excessive daytime sleepiness?
Gasping while you sleep?
Pauses in Breathing? Morning Headaches?



Are you one of the **40%** of the population affected by snoring?

We can help you!

We Are Able To Use Our Lasers To Give You A Better Night's Sleep And Improve Your Breathing!

The great thing with this is, no numbing, no down time, no surgery and it starts to work from the first session. The airway is improved 24hrs a day and not just when a device is worn!

Call Us Now On
01482 772562
To Book A Consultation

Castle Park Dental Care is a Private Independent Practice and the trading name of Castle Park Ltd.
Registered in England. Company No. 06703803



MARION OWEN TRAVEL



LEGENDS OF THE RHINE & MOSELLE WITH ALED JONES



A very special non flying European River Cruise

Overnight sailings from Hull to Rotterdam + 1 night on the return in Germany
Coach travel to/from the ship

Travelmarvel's brand new ship - Capella

15 April 2021 - Amsterdam to Basel 11 days from £1795

ALED JONES will be a guest on board

Question & answer session on board PLUS a 90 minute private concert in Cologne Cathedral

Enjoy, Amsterdam, Cologne, Cochem, Strasbourg & the Black Forrest
only a few spaces remaining

Your cruise includes :

- Return overnight Hull—Rotterdam
- Meals on board the ferry
- 7 night cruise accommodation
- All sightseeing excursions
- Services of a Tour Director
- 20 delicious meals whilst cruising
- Complimentary wine, beer & soft drinks with lunch & dinner onboard
- 1 night post cruise in Germany
- Coach travel throughout
- Travel from your door to King George Dock.
- Fully escorted by Marion

For further details & bookings tel: 07850 694101
visit by appointment:- 23 Portland, HULL, HU2 8JX

www.marionowentravel.com

ABTA D6499/Y2812

Prices from quoted on lowest grade window cabin... upgrades to French balcony cabins please ask.
This holiday is also available by air from Humberside Airport as a 7 night holiday, ask for details

*Terms and Conditions apply, please call inside for more details or see APT 2015 Luxury River Cruise brochure, UK0151_TM.

Support the advertisers who appear within the Cottingham Times

www.cottinghamtimes.co.uk - July 23



OFFERS!!!

ITALIAN PASTRIES
starting from £18 and
including a bottle of fine
Italian wine

TREKTY BONES
from £10

ITALIAN HAMPER
the perfect gift for a
special occasion

GIFT VOUCHERS ON SALE!

THANK YOU

TO ALL OUR CUSTOMERS IN THE VILLAGE

This is a tough time for everyone and, as a small family-run business, we have really appreciated the support and custom that we have received from the village.

Thanks to you, we are still open for socially distanced collections and deliveries. We continue to offer a full main menu, as well as groceries, treats and fresh homemade bread.

PASCO'S ITALIAN
— AT HOME —

5 Kings Parade, Kings Street, Cottingham, HU16 5QG Telephone: 01482 648419




WELL DONE, JESSICA! THE
WINNER OF OUR PIZZA KIT
COMPETITION!

Survey of the Manors of Cottingham 1649

Lockdown has been great for time-consuming projects. A few years ago I discovered a Survey of the Manors of Cottingham dated 1649 in the county archive. With scribbly handwriting, abbreviations and odd spellings, old documents can be difficult to read, and earlier historians had not transcribed this one, so I gave myself the challenge.

The survey lists the landowners, value of their land, and rents paid by the 300-plus named tenants. The 50 page document is part of a Government stock-take after the Civil War. At that time we had three manors; Powes, Richmond & Westmorland, but their 1600 acres were only a fraction of the 10,000 acres within the parish. There is very little description; the most detailed is a manor house "an old house builte with timber thatched with strawe verie ruinous. The walls chambers ffloores windows and dores all out of repaire."

The survey shows that many tenants rented only part of a house. When people worked outdoors all day and had few possessions, one room in a cottage and a share of its garden met their needs. Land value varied, but averaged one shilling per year. Oak trees are valued at 4 shillings, the same as a year's rent for a cottage, highlighting their importance before large-scale metalwork, when it took many mature trees to build each house, barn or ship.

When the Treasure House re-opens I'll be giving them the transcripts and modern language translation and also copies will go to the Cottingham Local History Society.

Geraldine Mathieson



Dignified funerals
At the lowest price locally. Guaranteed

Funerals from £1,299
Direct Cremation from £975

A Shepherd & Sons
Call 01482 947 357
62-64 Beck Bank, Cottingham HU16 4LH

During the Coronavirus pandemic, we can help and support you to arrange an intimate funeral now and a celebration of life at a later date.

dignityfunerals.co.uk/ashepherd/cottingham

Our Price Promise. We regularly check our competitors prices and are confident we are unbeaten locally. To give you further peace of mind, we also promise to match any local prices you may find after arranging your funeral with us. We guarantee to match any funeral quote from another funeral director that is within 5 miles of our location. Terms & conditions apply.



Motoring - with Roy Woodcock

Joining the *Cottingham Times*' regular features from this month is a series of road tests and motoring news by **Roy Woodcock**, a member of the industry-recognised Northern Group of Motoring Writers, who's been writing on motoring for more than 20 years. He starts by looking at the recently-unveiled, second generation, Renault Captur



The Renault Captur

Unveiled just as we were going into lockdown was the all-new, second generation, Renault Captur, bigger and better in every way from the car that was first seen in 2013.

Back then, we were still getting used to the idea of a small crossover-type vehicle, but in the intervening period the market and demand for such models has literally exploded. It was, prior lockdown, the most popular type of vehicle and I'm confident nothing will have changed in this "new normal".

Because there is now so much competition, this new Captur has to make you sit up and take notice. And after spending a week driving the vehicle on the roads of East Yorkshire I'm confident it will.

Completely refreshed inside and out, the new Captur is more spacious, stylish and refined. Although still recognisable when compared to the old car, where this new Captur scores is with its looks and practicality, with an evolutionary take on design that sees it more than four inches longer than the original model.

That means there's more legroom in the rear, where a sliding rear bench seat gives you the option of creating either more space for passengers or a larger boot. At its maximum, boot capacity has been increased by a significant 81 litres to a maximum of 536 litres. With the rear seats folded this increases to a maximum of 1,334 litres.

A further benefit is a movable boot floor that can be used to split the payload volume into two levels, creating more space or a totally flat loading lip with hidden storage below.

This Captur has a true SUV stance, which is enhanced by the tough-looking front and rear protection skid plates, the chunky protective mouldings that run the entire length of the lower body and the prominent wheel arch extensions.

The quality inside the car is where it really scores, in my opinion. It feels ultra modern and luxurious and the extensive use of high-grade materials, including satin finishes and soft touch plastics, plus even more supportive seats, gives it a truly premium feel.

It's available in three trim levels: Play, Iconic and S Edition. All versions are extremely well-equipped, with prices starting from £17,595 on the road, but since last month the car can be purchased on a "drive now, pay later" deal,

with nothing to pay for the first three months of ownership, 0 per cent APR and no deposit necessary. The offer includes Renault's five-year, 100,000-mile warranty.

I particularly liked the cockpit area, which centres around the multi-media screen. A seven-inch screen is standard on Play and Iconic models while the top-of-the-range S Edition, as driven here, gets an iPad-style 9.3-inch portrait screen. It bundles together all the navigation, infotainment and, on S Edition versions, multi-sense functions for optimum usability on the move.

All models also come with ultra-bright LED headlamps and driver assistance systems including Lane Departure Warning, Lane Keep Assist, Active Emergency Braking and Traffic Sign Recognition and E-Call.

In detail, Play models have: Automatic climate control, cruise control and speed limiter, FM/DAB tuner, Bluetooth and smartphone integration, electric windows all round, automatic wipers, body-colour door handles and mirrors and driver's seat adjustment.

Iconic models add rear parking sensors, 17-inch alloys, front LED fog lamps, two-tone paintwork, dark-tinted rear windows and roof bars.

S Edition models have a reversing camera, front parking sensors, ambient light settings, leather steering wheel and black and light grey synthetic leather upholstery with dark grey stitching.

At launch the new Captur was available with five engine options - three petrol and two diesels - while transmission options run to five or six-speed manuals, plus a seven-speed Efficient Dual Clutch (EDC) automatic.

Later in the year a plug-in petrol-electric hybrid joins the line-up - a first in the small SUV class.

I was driving a car fitted with the TCe 130 petrol engine that has already been seen on the new Clio, as well as Mégane and Kadjar. Packing 130 horsepower and 240Nm of torque, it delivers a compelling blend of strong performance and low running costs. There's also a choice of either six-speed manual or seven-speed EDC transmissions - my test car had the latter.

It handled well and was incredibly quiet with the cabin well insulated from outside noise. Economy was impressive - I averaged 49.7mpg across the week.

As stated, times have changed since 2013 and there are now a lot of really good rivals to the Captur, Mazda CX-3 is one I really like. But this Renault definitely has a lot going for it and is well worth examining.

* More information: www.renault.co.uk.



Support the advertisers who appear within the *Cottingham Times*

www.cottinghamtimes.co.uk - July 25



July is often one of the hottest months of the year and a great time to sit out and enjoy your garden. Keep your plants looking good by regularly dead-heading and you'll enjoy a longer display of blooms. Make sure you keep new plants well watered and hoe off weeds, which thrive in the sunshine. Not only can we enjoy our plants in the Summer we can also relax and unwind in the garden on the warmer evenings with a chimenea, garden furniture or even a few bbqs.



A guide to watering and feeding your garden

If you want a healthy garden with an abundance of flowers, watering and feeding are essential. Without water, plants will simply wilt and die. A complete fertiliser or specific nutrients are essential – particularly for plants growing close together. But when should you water and feed?

During long hot dry spells, plants definitely need water – but make sure this is given at the right time and in the right way. Plants need to be fed during periods of active growth – not when it could encourage new growth later in the season.

How to water

- **Watering cans:** Use one fitted with a fine watering can rose. This leads to less soil disturbance and possible root or plant damage.

- **Sprinklers:** Try not to use them in hot sunny weather as this can cause leaf scorching. More importantly the water applied has more time to be absorbed in the soil when applied in the cool of the evening or in the early morning.

- Trickle or soaking hoses: deliver tiny amounts of water over an extended period of time.

- **Root Watering:** Sink 5–8cm diameter pipes or plastic soft drink bottles with the bottoms cut off in the soil next to trees or shrubs, or in containers. Top these up with water on a regular basis.

Watering Tips

- It's better to soak plants from time to time rather than watering little and often.

- Make sure water gets right down to the roots, by placing



the hose or watering can spout at the base of a plant and water gently. If soil is very dry, water twice.

- Do not water plants too forcefully. Never direct a jet of water at the base of a plant as it will wash away the soil, exposing the roots. Make a hollow around the plant base and fill with water.

- Re-use 'grey water' from baths and sinks or recycle rainwater by using a water butt.

New Plants

New plants need a good deal of care and attention to help them adjust to their new surroundings and grow well.

- When planting new plants, prepare the soil to ensure they get enough water and food.

- Dig the soil between 25 and 50cm deep. This will let in air and water to prevent root suffocation.

- Add some water-retaining gel or try some well-rotted manure, garden compost or peat alternative, as these will act as a sponge, retaining water.

Lawn Irrigation

- If grass does not spring back after it has been walked on, water as soon as possible, as long as there isn't a drought!

- If it is very dry, spike your lawn with a fork before watering.

- The quickest way to water your lawn is to use a sprinkler but to ensure you don't over-water in one place, place a jar next to your sprinkler and move it once the jar has 2.5cm of water in it.

Caring for Containers

Like new plants, those in pots and hanging baskets need special care as they run out of water more quickly than

10 Jobs for this month

1. Place Conservatory plants outdoors
2. Regularly de-weed your borders and keep on top of weeds
3. Dead head bedding plants and repeat flowering perennials
4. Paint sheds, decking, fencing and furniture while its dry
5. Spray roses with fungicide to ward against black spot and mildew
6. Be water wise, use your water butt and keep on top of watering bedding in particular
7. Feed your lawn, particularly if you didn't do a Spring feed
8. Look out for Scarlet Lily beetles on your Lilies before they ruin them
9. Also keep a look out for other pests as they thrive in warm weather
10. Chop lupins, delphinium and poppies down once they have finished flowering

established border plants – which have bigger root systems and more soil from which they can reach water.

- Add water-retaining granules or gel (right) to compost in pots and place a small pipe or plastic bottle in the compost to help with root watering.

- Aim to keep the compost moist at all times, watering daily in hot weather.

- If the compost looks pale, has shrunk away from side of the pot, or if plants are droopy and wilting, stand the container in a bucket or pan so that it can soak water right up into the compost.

Dealing with drought conditions

Attach a water butt with a tap to your drainpipe to collect rainwater.

- Keep borders well weeded as weeds compete for moisture.

- A 5–7cm protective layer of mulch such as compost, cocoa shells, bark or even gravel spread on the soil between plants reduces evaporation.

- Stop sprinkling lawns in drought – in autumn they will recover!

- Hoe weeds at the roots to save time and avoid disturbing the soil and increasing water loss from the surface.

- Leave grass clippings on the surface of the lawn after mowing to recycle nutrients.

Different Plant foods for different plants:

- **Shrubs & trees** –Bonemeal when planting in autumn/winter; Growmore in spring/summer.

- **Bulbs** – Bonemeal after flowering.

- **Bedding plants** – fortnightly general liquid feed.

- **Container plants** –general liquid feed weekly in spring/summer.

All living things need food and water and plants are no exception. They need a mixture of the following three main types of plant food:

- **Nitrogen** promotes leaf growth.

- **Phosphates** help roots develop.

- **Potash** increases production of flowers and fruits and improves fruit flavour. It also increases winter hardness. They also require trace elements of calcium, boron, iron, magnesium and manganese. By applying a range of garden fertilisers, you can ensure your plants receive sufficient food to perform to their full potential. Some specific plants need tailored cocktails of fertilisers – roses are a good example.

INORGANIC FERTILISERS: Those manufactured from a chemical process or mined. Today these are formulated into compound fertilisers that release a balanced amount of nitrogen, phosphates and potash over a period of time. There are dedicated fertilisers that supply just one of the elements and these can be used to correct any specific deficiency. They are applied as a dry powder or in granule form in spring, at the manufacturer's recommended rate. Some act quickly, other slow release types release small amounts over a long period. Some are available in both dry and liquid forms – liquids are applied from late spring to early summer.

- **Sulphate of Ammonia** –contains concentrated nitrogen.

- **Sulphate of Potash** –a good source of potassium.

- **Growmore** – a good balanced fertiliser.

- **Sulphate of Iron** – for acid loving plants.

ORGANIC FERTILISERS: Derived from vegetable or animal matter, they are often slow-acting so apply them in good time.

- **Mushroom compost**– contains a range of nutrients.

- **Liquid seaweed extract** – contains nitrogen, potash and phosphate.

- **Bonemeal** – a good source of phosphate.

- **Wood ash** – contains a small amount of potassium.

- **Fish, blood & bone** – a general fertiliser, containing phosphorus, nitrogen and potassium.

Support the advertisers who appear within the Cottingham Times



FROM £15 PER TREATMENT

GreenThumb
LAWN TREATMENT SERVICE

START YOUR JOURNEY TO A BEAUTIFUL LAWN...

...with GreenThumb Beverley, your local lawn care specialists.

Contact GreenThumb Beverley for your FREE lawn analysis:
01482 880082
or email: beverley@greenthumb.co.uk

BASIS LAWN Insurance



NEWSTAR
SECTIONAL BUILDINGS

Est. Over 40 years
OPEN 7 DAYS A WEEK
Open Sundays
11.00 am - 3.00 pm

- Concrete Garages and Sheds
- Greenhouses, Summerhouses, Cabins
- Playhouses, Dog Kennels, Garden Structures, Log Stores
- Base Laying & Removal of old Garages & Sheds
- Full Delivery and Erection Services
- Refelting of Existing Sheds

FREE LOCAL SITE SURVEYS

Corner of Ash Grove & Beverley Road, Hull HU5 1LT
(Opposite Blind Institute)

TEL: 01482 444256
sales@newstarbuildings.karoo.co.uk
www.newstargardenbuildings.co.uk

www.cottinghamtimes.co.uk - July 27



TIME FOR YOU
DOMESTIC CLEANING

Would you like an **Honest, Reliable and Affordable police-checked* cleaner to clean your home?**

- Service tailored to **your** needs
- Same cleaner each visit
- Typical hourly rate £13.00 (weekly cleaning)

Call Jan TODAY: 01482 977737
Mobile: 07930 241 087
hull@timeforyou.co.uk www.timeforyou.cleaning/hull
*police checked cleaner on request



THE
BATHROOM
SANCTUARY

CONTACT
TEL: 01482 247321
26 KING STREET,
COTTINGHAM HU16 5QE
www.thebathroomsanctuary.co.uk



THE BEAUTY CLINIC
EST 1995

Beauty & Skincare Specialists
01482 875329
www.beautycliniccottingham.co.uk
104A KING STREET, COTTINGHAM

ADVANCED NUTRITION PROGRAMME jane iredale ENVIRON DECLÉOR CICI



Cottingham Plumbing Services

Jobbing Plumber - Semi-Retired
Serving Cottingham and Local Area
(C&G Advanced Plumber) - (MCIQB) - (No Gas Work)
Highly Experienced - Highly Qualified - High Quality - Low Prices

Tel. 07931 988882

Your Stars for July 2020

By Kay Gower

Aries (Mar. 21- April 20)

Sometimes it can be foolish to wish for a winning hand. This month all the fun will be in playing the hand you've been dealt. Yours is pretty good, by the way.

Taurus (Apr. 21- May 21)

You will hear some good news or an important decision will bring a feeling of satisfaction and put an end to problems and stress.

Gemini (May 22-June 21)

You might notice this month that you've come full circle, and it may come with a twinge of mixed emotion. Take heart that it's not the end of the journey. That's the good thing about circles.

Cancer (June 22-July 22)

You do have options other than the ones you currently see, remember this and it might help you from feeling trapped. Be gentle and patient with yourself.

Leo (July 23-Aug 22)

Surprising twists and turns over the coming weeks will cause you to act quickly. Eat, sleep and exercise ensures you stay mentally and physically nimble.

Virgo (Aug 22 - Sept. 23)

Make a choice. Now make another. A few quick decisions bring you sweet rewards - and much faster than you had hoped. You sparkle all month.

Libra (Sept. 24 -Oct. 23)

You are overdue a lucky break. Be willing to accept what is being handed to you on a plate and avoid asking too many questions. Sometimes there doesn't need to be any complications where success is concerned.

Scorpio (Oct. 24 - Nov. 22)

Some unpleasantness that happened in the past is in the past now. You have been made wiser for it which is why you'll have so much to give over the coming months. Late summer will bring change.

Sagittarius (Nov. 23 -Dec. 21)

This month mends your personal life, broken relationships heal and new relationships strengthen. The next three weeks bring laughter and fun. You are physically growing stronger.

Capricorn (Dec 22.- Jan. 20)

The first week of the month brings useless distraction - try and stay focused. Limit the time you spend with people who can't or won't get behind your plans.

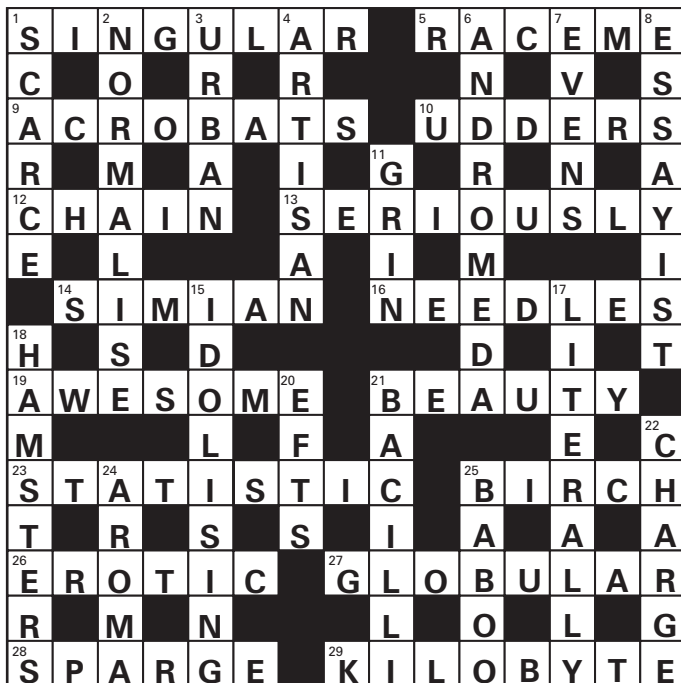
Aquarius (Jan 21 - Feb 19)

You may get the impression this month that there's some secret information being passed about to which you're not privy. Could this be a pinch of paranoia ...or is it a sign for you to pay more attention? There can be a world of knowledge inside small talk.

Pisces (Feb. 20-Mar. 20)

You enjoy helping others with no reward necessary. So, allow yourself be helped too, and without feeling that you must immediately repay everyone involved.

Crossword solution from page 14



Sudoku Answer from page 12

2	3	6	4	1	8	5	7	9
7	8	4	5	9	3	6	1	2
5	9	1	2	6	7	8	3	4
4	5	3	6	7	1	9	2	8
6	2	7	8	4	9	3	5	1
8	1	9	3	2	5	7	4	6
9	6	5	1	3	4	2	8	7
1	7	8	9	5	2	4	6	3
3	4	2	7	8	6	1	9	5

Deadline extended for applications for discretionary grant scheme

Small and micro businesses and charities across the East Riding who have not qualified for Government funding so far during the COVID-19 pandemic have been given more time to apply for grants of up to £25,000.

Businesses that share a work place, B&Bs that pay council tax, market traders who have fixed property costs and charity properties could all be eligible to apply for funding through the Government-backed discretionary grant scheme.

The fund is limited to £4million and grants of either £25,000, £10,000 or up to £10,000 are available to those eligible businesses or charities that are able to demonstrate they have on-going property costs, have suffered significant loss of income during the lockdown and have been unable to claim from the Small Business Grant Fund or the Retail, Leisure and Hospitality Grant Fund.

A second phase of the scheme will be launched later this month and will target those businesses who did not qualify for phase one and who the council identifies as a local priority.

For those businesses who have already applied for grants, applications forms are being verified and payments will be made as soon as possible.

Councillor Richard Burton, leader of East Riding of Yorkshire Council, said: "The council is aware there many small and micro businesses and charities across the East Riding who have not been eligible for financial support from the Government but there is financial help available via this scheme.

"The deadline for applying for the grants has been extended so I would urge those businesses who haven't accessed financial support to check the eligibility criteria to see if they qualify for a grant."

The closing date for phase one applications is Sunday, 21 June and is limited to one application per business, sole trader or charity.

For more information, details of the criteria for the discretionary grants as well as the application form go to www.eastriding.gov.uk/discretionarygrantscheme.

* Businesses across the East Riding looking for more advice and guidance during the COVID-19 pandemic, or for any other general business support enquiries can contact the council's business support team by emailing startup.business@eastriding.gov.uk.



WILLERBY HANDYMAN
CALL OR EMAIL NICK ON
07486492433
WILLERBYHANDYMAN@GMAIL.COM
NO JOB TOO SMALL, DON'T HESITATE TO ASK...



www.premierroofing.co.uk
24 HOUR CALL OUT
Fast, Friendly Service

Premier Roofing Ltd.
Domestic & Commercial • Felt Roofing • Fibre Glass
• Fascias • Soffits • Rainwater Systems • Tiling • Cladding
TELEPHONE: 01482 571870/07813 118129









Local Beekeeper Neil Gower reviews the effects of Covid-19 On Beekeeping and the natural World

The Unknown

I finished my last article in February with the statement "Here's looking forward to spring".

I'm sure not one of us could have imagined what the spring would bring with it and how it would affect all our lives. Devastating Loss, lockdown, isolation, travel restrictions, businesses closed and social distancing.

Yet throughout these difficult times the sun continued to rise, the tides continued to ebb and flow and mother nature has carried on as normal completely oblivious to Coronavirus. Spring is always the time of rebirth when the natural world shakes off the effects of the winter. The spring bulbs came and went, the fruit trees blossomed and now the roses are showing, and my bee colonies have developed well thanks to the warm weather in May.

In February I had been concerned about the effect the long wet winter would have had on my colonies but they emerged well and the Queens started laying eggs, plenty of pollen was brought in to the hives and I am pleased with their development. In spite of everything, our beekeeping suppliers have found a way circumvent a whole host of problems meaning that I have been able to restock my supplies as necessary and have enough equipment to be effective.

Regular readers of this column will remember that I lost all my bees to vandalism a few years ago and I had to start from scratch. I now have colonies with Queens that have the right temperament and I have been breeding off them this spring. I feel comfortable with the Queen stock that I now have and this reinforces the point that it can take 2 or 3 years to fully recover from a situation like that.

30 July - www.cottinghamtimes.co.uk

It's Official

At the beginning of the Covid-19 crisis all registered beekeepers received a letter from the Government department DEFRA to be carried with them at all times. It requested that beekeepers should continue to manage and care for their livestock throughout the crisis period whilst observing social distancing and hygiene rules. The letter was to be produced in case we were stopped by the Police whilst going about our beekeeping activities.

Fortunately, I have not had to produce my letter and have managed to visit my apiaries regularly throughout the period. Social distancing hasn't been a problem as none of my hives are in high density population areas and I find most people like to retreat quite a lot further than 2 Metres when you remove the roof of the hive and lots of inquisitive bees come out to investigate.

The Hybrid Hive

In the last article I made reference to the fact that I'd made up plans to build a new type of hybrid hive for my own use. The hive is slightly smaller and lighter than the 'modified National' hive that I use and I'd managed to acquire all the materials I needed before lockdown came into effect.

I've now completed the hive with a few small modifications to my original plans and I'm just about to apply its weather coating. Over the next few weeks I'll be field trialling the hybrid with one of my newly bred Queens' and her small colony. I'll keep you posted of progress in future articles

The Natural World

Since this disruption entered our lives many, myself included have enjoyed reconnecting with the natural world looking for that small shoot of green in the dark.

I'm reminded of the words of William Wordsworth

*"The budding twigs spread out their fan,
To catch the breezy air;
And I must think, do all I can,
That there was pleasure there.*

*If this belief from heaven be sent,
If such be Nature's holy plan,
Have I not reason to lament
What man has made of man?"*

Support the advertisers who appear within the Cottingham Times



MONET

The newest release from Tim Cotterill,
the Frogman

197 Hallgate
Cottingham, HU16 4BB

*Art*market

01482 876 003
www.artmarket.co.uk

We're Open



**Locally
Grown Plants**



**Take Out Coffee &
Treats are Available**



**4Pets is Fully Open
with Live Food Available**



**Great Lifestyle
Products**



324 Hull Road, Woodmansey
Beverley HU17 0RU
Tel: 01482865410

Opening times:
Mon - Sun: 9am - 5pm
No Dogs Allowed at present

Find us on facebook

Follow us on twitter

Find us on Instagram

www.colettagardencentre.co.uk

*Quality, value & service
for over 70 years!*