

Cottingham Times

and District

Issue 232 - July 2021



STEPHEN RICHARDSON
PLUMBING, HEATING & GAS SERVICES LTD

01482 840 877



Summer is here!

Don't forget your annual boiler service, so it continues to provide plentiful hot water for showering all summer



Contact us for professional advice on all your plumbing and heating needs.

www.srichardsonplumbing.co.uk
srichardsonplumbers@gmail.com

Unit 2D Station Road
Cottingham, HU16 4LL



The Manor House



A word from our chairman

Summer is finally here!

In fact, it feels like the sun has come out especially to mark our transition to a more 'normal' way of life, as lockdown eases and we begin to welcome visitors back to The Manor House.

I would like to take this opportunity to thank our amazing staff team that has been working tirelessly throughout the pandemic and lockdowns, led by our inspiring manager Leanne Hatch. What a star!

The team have delivered tender, loving care to your loved ones in a light-hearted manner, in spite of their own worries and concerns, enabling normal life to continue inside our care home bubbles. As I have said many times on social media, inside our four walls you would never have known of the crisis in the wider world, and so bless them all. I salute all of our staff and I'm personally forever in their debt.

All our residents have now had both vaccinations and all of the staff too.

Many care homes still have a 5% to 30% refusal rate to get the vaccine – not so at Park Lane Healthcare, where all future staff that we take on will need to have been vaccinated twice.

It's great to see residents out enjoying the sunshine, especially with their relatives, as visiting gets back to normal.

We now look forward to a wonderful, much-needed summer.

At the inevitable parties that we will be holding at our care homes very soon – it will be lovely to greet you all in person.

*Chris Mitchell, Chairman,
Park Lane Healthcare*

News from The Manor House, Little Weighton

Birthday and wedding celebrations

At The Manor House, we love to make a fuss of our residents on their birthdays and in the past few weeks, we have had some very special celebrations!

Gladys and Rachel both turned 90 recently and were treated to cake, balloons and singing, but fortunately we asked our Chairman not to sing, even over zoom!

Gladys' fabulous cake reflected her love for her favourite treats – a good old cup of tea with biscuits!

After seeing her mum's celebrations with a special bouquet and silver '90' balloons on the home's Facebook page, Gladys' daughter Sue Bell, wrote: "Thank you all so much for making mum's day



so special – and a big thank you for ensuring we could share some of it with you all. What an amazing team you all are."

Meanwhile, happy residents Joyce and Roy raised a toast to family members who recently got married, when a relative brought in some of the wedding cake for them to sample.

There's nothing residents love more than a bit of cake and they even enjoy making a traditional Victoria sponge for themselves from time to time!

Of course, an occasional glass of wine and chocolate also goes down a treat!

Long may the sunny summer weather – and the celebrations – continue!



Residents get arty to keep cool



After every storm comes a rainbow – and with the sunshine making a welcome return at the same time as lockdown restrictions have begun to ease allowing for visitors to return to The Manor House, residents' spirits are bright, as their creative efforts show!

Our activities coordinator at The Manor House, Emily, works with a national company called Creative Mojo to bring a whole range of arts and crafts for residents to enjoy. Creative Mojo provides an entirely inclusive service, enabling all our residents to engage and benefit from the stimulating activities. Life at our homes is all about Making New Memories, our mantra and one we keep at the forefront of our minds.

Pamper time for residents

Care assistant Caroline has been treating more residents to a new hairdo this month, providing them with the opportunity for a well-deserved pamper.

Birthday girl Gladys was among the residents to be treated, with her daughter Sue Bell commenting: "Looks great Mum now the rollers are out. So lovely to have a giggle through the window with you this morning. Thanks to the team at The Manor House."

Richard also felt refreshed and ready for the summer after his haircut.

So here's to a wonderful summer and God willing, to be able to fling open the doors again really soon now! Lots of love to you all from all of us at The Manor House, Little Weighton.

*Park Lane
HEALTHCARE*

Residential Care ~ Respite Care ~ Day Care ~ Dementia Care

The Manor House White Gap Road, Little Weighton East Riding of Yorkshire HU20 3XE T: 01482 848250

THE COTTINGHAM TIMES

1 Forge Place, South Rise, Skidby, Cottingham HU16 5UL
Telephone: 01482 840035 :: Mobile 07563 885388

Editor: Keith Teale

Published Monthly by: The Cottingham Times

Enquiries: Advertising

Tel: 01482 840035 :: Mobile 07563 885388

Editorial and Contributions

Tel: 01482 840035

Accounts: Tel: 01482 840035

Website: www.cottinghamtimes.co.uk

E-mail: media@cottinghamtimes.co.uk

Cottingham Times is a totally independent publication.

The views expressed in the Cottingham Times are not necessarily those of the editor. Copyright of the entire magazine contents is strictly reserved on behalf of the Cottingham Times and the authors. No part of this magazine may be reproduced in any form without prior written consent of the Cottingham Times.

Disclaimer

Whilst every effort is made to ensure the accuracy of the dates, event information and advertisements, events may be cancelled or event dates may be subject to alteration and the Cottingham Times can accept no responsibility for the accuracy of any information or claims made by advertisers included within this publication.

Notice to Advertisers

Trades Descriptions Act 1968. It is a criminal offence for anyone in the course of a trade or business to falsely describe goods they are offering.



EAST RIDING ELECTRICAL
Local Time Served NICEIC Approved Electrician
Over 37 Years Experience



Full/part re-wires Fuse boards/consumer units replaced Extra sockets & lights Burglar alarms installed & maintained Smoke detectors Electric heating	Electric showers Immersion heaters Fault finding & repairs CCTV installation/repairs Outdoor lighting & power Electric vehicle charger installation	Testing & inspection/certification Landlords electrical safety checks/certificates Full insurance backed guarantee Domestic and commercial work
---	--	--

Contact us for **FREE** quotations and advice:   

Tel: **Anlaby** 01482 571222
Beverley 01482 862220
Email: info@eastridingelectrical.co.uk
Web: www.eastridingelectrical.co.uk

 
★★★★★



Bridget FREER
07541 009321
bridget@bridgetfreer.co.uk

clinical hypnotherapist

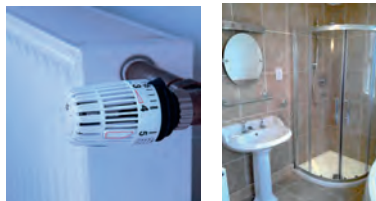
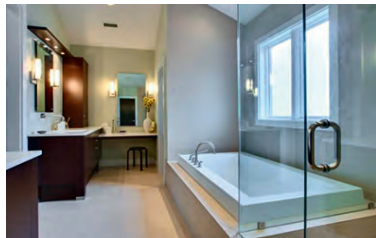
Lose weight with a
Virtual Gastric Band

Smoking: Stress: Phobias: Drinking: Gambling

www.bridgetfreer.co.uk

Williams Plumbing & Heating

(Established over 35 years)



**Plumbing - Heating -
Bathrooms - Tiling**

Full Bathroom Installations

• Tiling • Electrics • Building Alterations • Joinery

Central Heating

• Full Systems • Boiler Changes

Plumbing and Gas

• Gas Fires • Servicing to all Gas Appliances



**Accredited Worcester
Bosch Installer**

Tel 882552 Mobile 07721 366343



Quality Water is our Business

Hard Water Horrors ?

Fitting a new kitchen or bathroom is often an occasion that gets people thinking about protecting their planned investment from the ravages of hard water; limescale, soap scum, streaks and spotting . . . the list goes on.

After all the effort and cost of selecting and fitting your new units and appliances its only natural to want to keep them sparkling and pristine and the one guaranteed way in our hard water county is to find the correct water softener for the property and get it installed as soon as possible.

Immediately after it is installed, a professionally specified and installed unit will protect plumbing, showers and appliances and keep everything at peak efficiency and performance year after year.

Amazingly the softener doesn't stop there, it will also undo the previous years of scale build up in existing plumbing and appliances and over a period of 12 months or so it will gently dissolve away the limescale.

Cleaning and care for kitchen and bathroom is transformed with a softener; no need for harsh chemicals or scrubbing and elbow grease; a rinse and wipe down is all that is needed.



How will I find room for a water softener, they are huge aren't they?

Well, yes they used to be and indeed some of the older styles and more basic "builder grade" softeners still available are on the bulky side, however the good news is that there are now compact, non electric "consumer range" softeners that are the size of a tower computer, superbly efficient and stylishly designed to blend in.

Will we need plug sockets and a degree in computers to operate it?

In a word, no. The modern softeners no longer need electric power, they are kinetically powered by water flow and are pre set by our skilled installer to give perfectly soft water all of the time, no dials to set or flashing lights to look out for, its all perfectly simple, perfectly soft.



I don't want to be moving big heavy bags of salt around, has this been improved?

Yes indeed it has, I'm pleased to say, compressed 4kg Salt blocks are now available for certain units, which makes storing and replenishing salt much easier and salt can be delivered direct to your door or picked up from our Hull store as required. All the above benefits of a

softener will not be at the top of most long term softener owners list of reasons they would not be without theirs, they almost all say it is the luxury of bathing, showering and washing in the superbly soft water, not to mention the super soft fluffy towels that are the product of softened water laundry.

For more friendly, unbiased advice and information, just call Dave Parry at:



**GREENS
WATER
SYSTEMS**

647 Anlaby Road, HULL HU3 6SX
please phone to check opening hours

Telephone 01482 351 769

email: d.parry@water-systems.co.uk

visit: www.water-systems.co.uk

- for Water Softeners, Salt, Quookers, Water Filters, Taps and Cartridges and Road Salt for icy conditions.



In Cottingham and District

The deadline for entries in the August 2021 "What's On" section, is no later than the 19th July 2021.

Hull Alpha Probus

Hull Alpha Probus will be holding coffee morning meetings throughout July and August in the upper room at Kristoff's on Hallgate. Please note the dates are now 8th & 22nd July and 5th & 19th August 2021 at 10:30am. New members are welcome – please contact the Secretary on 01482 348270 for more details.

Yorkshire Country Women Association Skidby Branch

The first meeting in the Skidby Village Hall will be held on Thursday 2nd September at 7:30pm 2021 Hope to see all members there and welcome any newcomers. Please contact Celia Parnaby on 841370.

Cottingham and Hull Folk Dance Club

The above Club will resume dancing on the 7th of September 2021 in the Darby and Joan Hall Finkle Street Cottingham The evening will start at 7.00 for beginners tuition and practice dances. Dancing will commence from 7.30 to 9.30. All are walked though before put to music, you do not need a partner as all dance sets are made up of members present. There will be a short interval for free tea coffee and biscuits, New members are very welcome to this very friendly club, come and enjoy gentle exercise to music and get fit again after the long period of lockdown. All requirements for covid protection will be adhered to in accordance to government regulations. For further information please contact Jan Gray on 01482840637 or Keith Alexander on 01482509751.

**Front cover: The Parkway, Cottingham.
Photo: Paul Lakin.**

Looking for Window Blinds?

All Types of Blinds Supplied - Vertical / Roller / Venetian / Roman



Conservatory
Specialists

**5YR
Guarantee**
ON ALL
PRODUCTS

UKBlindsdirect
www.ukblindsdirect.com
ukblindsdirecthull@outlook.com

ALL blinds Measured & Fitted **FREE**
Call us for a no obligation quotation
01482 840238



New fund offers financial support to help people be active

A memorial fund set up in tribute to local man, Mike Barlow, is now supporting people to be active. The fund has been created by local charity and athletics club, Fitmums and Friends, to help people – both club members and non-members – who need a little extra financial support to be active or volunteer with the club.

Mike, who lived in Cottingham from the age of eight, worked locally at Ideal Standard for 20 years and then spent the last 20 years working as a Bowen therapist. He also devoted much of his time to coaching athletics with Fitmums and Friends – supporting both children and adults to enjoy being active. Sadly, Mike died of cancer in October 2020, having battled with an incurable tumour for 13 years.

His son, Ollie, completed a running challenge last year which raised around £3,500. This has been used to create the Mike Barlow Memorial Fund which is now offering financial support to anyone wanting to join Fitmums and Friends or to access a course to gain a qualification to volunteer within the organisation. The idea is to help people who may struggle financially to reap the benefits of being active in a supportive environment.

Mike's wife, Sam, started Fitmums and Friends from their Cottingham driveway in 2009. From small beginnings, the charity now supports around 1,000 men, women and children in 11 clubs across Yorkshire and NE Lincolnshire – with options to walk, run, cycle, sing, and do family-friendly exercise sessions.

Sam says: "The fund is the best possible legacy for a man who cared so much about supporting people to enjoy exercise. We hope that through it we can help more people to improve their physical and emotional well-being by being part of an organisation which is especially passionate about helping those new to or returning to exercise".

Mike's children, Ollie (17) and Emmie (15), sit on the panel which reviews fund applications and they love being able to carry on Mike's spirit of support.

More information about the fund is available on the Fitmums and Friends website at <https://fitmums.org.uk/support/mike-barlow-memorial-fund>.

Support the advertisers who appear within the Cottingham Times

Four Generations, giving 125 Years of Family Service

Herbert
1870-1962

Eardley
1908-1986

Geoffrey
1939-2015

David
1964



Golden Charter
Funeral Plans



- Funerals Respectfully Conducted
- 24 Hour Out of Hours Service
- Free Advice and Support
- Private Restrooms
- Pre-Paid Funeral Plans Available
- Finance Options Available



David and Fiona Kemp

Tel: 01482 844695

www.hkempandsonltd.com

259 Hallgate, Cottingham, East Yorkshire, HU16 4BG

Fax: 01482 843898

Email: hkempandsonltd@gmail.com

A Bespoke Sofa or Suite designed by you, built by us

For 36 years we have been turning people's furniture dreams, into reality!
A unique piece of furniture that fits your home perfectly.



**Hannam Upholstery
Company**

Hand-built furniture that carries a 10 year frame guarantee

1b Main Street, Willerby, East Yorkshire HU10 6BP.

Tel/Fax: (01482) 658787

Find us on Facebook and Twitter

www.cottinghamtimes.co.uk - July 5

Plans for solar panel field to power Castle Hill Hospital

Hospital bosses have unveiled plans to create a solar panel field to power Castle Hill Hospital in Cottingham and reinvest savings in health care for future generations.

Known as a "ground mounted solar photovoltaic array", the solar panels will be created on fields owned by Hull University Teaching Hospitals NHS Trust, south of Castle Road.

All energy generated by the solar panels will be used to power the hospital as part of the trust's commitment to reduce its impact on the environment, minimise carbon emissions and enhance the sustainability of trust land, buildings and properties.

Savings in energy costs will then be reinvested in hospital services to tackle waiting lists hit hard by the Covid-19 pandemic.

Chief Executive Chris Long said: "We have begun a major programme to reduce our impact on the environment, benefiting the health and wellbeing of everyone working or living near our hospitals as well as those who need our services.

"Using trust land to generate power for our hospitals is a major achievement that represents a huge leap forward in securing our future energy needs in a responsible and sustainable way.

"We know, better than most, how climate change has an adverse effect on people's health and future generations will pay the price if we fail to act now.

"Doing nothing is no longer an option. We must lead by

example and take action now to tackle the climate emergency we all face."

The trust, which runs Castle Hill Hospital and Hull Royal Infirmary, declared a climate emergency recently. It wants to balance the amount of greenhouse gas it produces and the amount it removes from the atmosphere, known as carbon net zero, before 2040, ahead of the target set by the wider NHS.

As well as improving the environment, the entire environmental programme will also help the trust achieve its long-term goals of exceptional health care and clinical services, high standards of research and innovation and financial sustainability to ensure we can provide health services over the next decades.

A planning application for the ground-mounted solar photovoltaic array will be submitted to East Riding of Yorkshire Council shortly. The trust is also writing to residents living near the hospital to inform them and invite their comments about the plans.

Marc Beaumont, Head of Sustainability and Social Value at the trust, said: "We hope residents and the wider community will see the benefit of our plans and help us achieve our aim of improving health care and our services while minimising our impact on the world around us."

Phoenix Walkers are Back

And welcome new and old members to enjoy a day out in country or coast.

A choice of 2 walks 5-7 miles or 7-10 miles on Sundays.

Sunday 11 July Osmotherley North Yorkshire

Sunday 8 August West Heslerton/Ganton North Yorkshire

Come and Join Us. The coach picks up outside Hull Truck Theatre on Ferensway Hull at 8-30am; Beverley Road around 8-45am and Cottingham Green around 9am coach fare £10.

Walks are with leaders and are risk assessed.

You may come three times before deciding to join us years membership fee £10.

For further information and to book your seat on the coach please ring Sid&Sue 01482 701325. email phoenixwalkingclub@outlook.com.

For when it's time to make plans, we can help with...

- Conveyancing • Family Trusts
- Estate Planning • Wills
- Lasting Powers of Attorney
- Commercial Property

Jane Brooks LAW

Hedon 01482 893366 13 St. Augustine's Gate, Hedon, HU12 8EU
Cottingham 01482 848101 112 King Street, Cottingham HU16 5QE www.janebrookslaw.co.uk

East Riding of Yorkshire Council's new waste & recycling app goes live

East Riding of Yorkshire Council has released a new app called the 'East Riding Council' app for residents to download and find out information about the local authority's bin collection service and waste & recycling.

Produced by developer Cloud 9 Technologies, working with the council, the app is branded to the East Riding and gives immediate access to waste and recycling and bin collection information. The app is free to download from your device's app store and available now!

Once a resident has entered their address on the app, they receive information about waste collections and notifications reminding them to put their bins out. Information can also be given about changes to collections due to bank holidays.

The app also includes a new, easy way to see what bin an item should go in. Using the 'Can I recycle it?' tool, residents can search 1000's of items to find out what can be recycled in the blue and brown bins and what should go in the green general waste bin. Residents will also be able to locate their nearest recycling centre and check opening times.

The council will shortly be making changes to bin collection dates across East Riding. Information will be posted out to all residents in July and August including information about the changes and a new 18 month collection calendar. All residents who have downloaded the app at the time of the changes will find their calendar in the app and collection reminder notifications will automatically update.

To download the app, residents should visit www.eastriding.gov.uk/app, or search 'East Riding Council' in their device's app store. Once downloaded, residents can enter their home postcode to ensure all information will be bespoke to their local area.

Further developments to the app are expected to continue to take place and more information on this will be available by visiting www.eastriding.gov.uk/app.

Councillor Chris Matthews, portfolio holder for environment and climate change, said: "The new app will allow even more residents to access information regarding their waste collection service at the click of a button. As well as a notification to remind them about putting their bins out, the app will give instant information as to which bin your waste should be placed in and automatically updates to take into account all public holidays. Best of all it is entirely free so I would encourage all residents in the East Riding to download the 'East Riding App' for the easiest way to keep on top of your bins."

At the present time we are not holding social events, but hope to do so in the not to distant future.

During the Winter months members play Carpet Bowls in the Pavilion.

The Club has equipment which new Members can use, free of charge.

Interested parties can visit the Club by arrangement any day except Wednesdays, and should you wish to have a trial session, or if you are a novice, have a brief learning session, this can be arranged. Further details can be obtained from the Club Secretary, Trevor Holborn, telephone 849647; email revtrev@gmail.com.



SMART REPAIRS

**Bumper Scuffs :: Smart Alloy
Wheel Repairs :: Power Polish
Summer Waxings :: Headlight Polishing**

Protect your car with our Summer Waxing! £80



Closed 16th & 17th July Only

*Pictured is an example of a Smart Repair
"You would never have known it had happened!"*

Unit 11 Station Road, Cottingham HU16 4LL
Telephone 01482 840465
email: john.allen@jjsmartrepair.karoo.co.uk

Find us on thomsonlocal.com  Like us on Facebook

Cottingham Bowling Club welcomes new members

Cottingham Bowling Club has re-opened and welcomes new members.

The Club (established 1919) is situated on New Village Road at the Thwaite Street roundabout. We have a Membership of approximately 100 comprising of both Ladies and Gentlemen. Between April and September, the Members meet to play outdoors on one of the 11 rinks. All of the Members are eligible to play Social Bowls in an afternoon between 2.00 pm and 4.00 pm Monday to Friday; to take part in internal Competitions, and to be selected to represent the Club in External Competitions.

Support the advertisers who appear within the Cottingham Times

DREAM DOORS®

NEW LIFE FOR OLD KITCHENS



VISIT OUR SHOWROOM NOW:
4a Belprin Park,
Swinemoor Lane,
Beverley, HU17 0LN
Call us now for a free estimate:
01482 861 653

Checkatrade.com
Where reputation matters
AVERAGE SCORE **9.7/10**

Following Government Guidelines

THE UK'S #1 KITCHEN MAKEOVER EXPERTS

- From simple door replacements to complete fitted kitchens
- Fully installed by local professionals in just a few days
- Choose from a large selection of doors, worktops and appliances
- 96 showrooms nationwide

www.dreamdoors.co.uk

QUALITY BEDROOM MAKEOVERS BY LOCAL PROFESSIONALS

- Bespoke sliding wardrobes
- Styles to suit every home
- Wide range of colours and finishes to choose from
- 96 showrooms nationwide

www.dreamdoorsbedrooms.co.uk

20% Off Extended throughout Summer

www.cottinghamtimes.co.uk - July 7



Planning for new housing

Every Local Authority, in our case East Riding Council, must allocate land for new housing. The planning process is long and starts with rules to decide how sites are allocated, and calculations to predict the number of homes needed in each area. Bids from land owners and developers are then measured against these rules, and sites allocated to meet projected need. Every stage involves consultation with the public and with specialist interest organisations covering health, education, environment, heritage, transport etc.

East Riding Council started its current Local Plan about 15 years ago, and this came into force five years ago, following examination in public by a Planning Inspector. That was when land for the prominent new estates, on Harland Way and Castle Road, was allocated.

To help shape the new developments, Cottingham Parish Council produced an award-winning Neighbourhood Plan that was inspected and adopted by ERYC after the Local Plan (it could not be before) and after a referendum. This adds another layer of planning rules for developments in Cottingham, but cannot be backdated and applied to sites where outline planning permission was granted earlier.

Local Plans must be reviewed regularly, to check how well the Plan is meeting its aims, and to reflect changes in regulations. ERYC has looked at the changes in the last 5 years, and has now published a proposed update to the Local Plan for consultation. You can read the document and submit your comments via the ERYC website until 6th August 2021. Follow links for 'Planning permission and building control', 'Planning policy and the local plan', 'Local Plan Update'. The revised Plan will be formally inspected, and if everything goes to schedule, could be adopted by December 2023.

The target number of dwellings to be built has reduced by 300 per year across the county, but the length of the Plan has been extended by 10 years, so some new sites are proposed. The biggest changes are in Goole and Howden. Two new sites are proposed for Cottingham: 'Cott:-O' Hallgate Old School and 'Cott:-N' Thwaite Hall, for which conversion plans are well underway.

Please read the documents and submit your comments to ERYC, preferably using the online forms. As lockdown eases, ERYC Planning officers hope to hold some face-to-face public consultations at when they can answer any questions you might have. Your ERYC and Parish councillors may be able to answer your questions too.

Water Butts

For the 2021/2022 financial year the Parish Council has allocated £300 to assist residents purchase water butts for their properties. We can offer £25 per household towards the cost of a new water butt and we would require a copy of the receipt. If you are interested in this grant please contact the Parish Council office prior to purchase. The water butts are to be used for residential properties and not on allotments.

HARD WORK NEVER HURT ANYONE



Local personal injury solicitors, Helen Drewery and Debbie Schofield, have over 55 years' combined experience of obtaining compensation for people injured by accidents or asbestos-related disease.



He did all the overtime so we could make ends meet.

Every day, hard-working people do their best for their families, putting up with adverse working conditions because they are loyal, thankful for their jobs, enjoy the camaraderie and have pride. Yet every day, people are injured or develop industrial diseases such as asbestos-related disease or asthma, through no fault of their own.

My mother used to shake his dusty overalls.

Every day, the fumes made me cough and choke.

Our solicitors deal with all types of injury claim, except clinical negligence.

It was supposed to be a 2 person job but I had to lift it on my own.

They said that only blue asbestos was dangerous and I did not need a mask.

Helen Drewery has over 30 years' experience dealing with accident claims.

Debbie Schofield is the area's most knowledgeable asbestos solicitor with over 20 years' experience in the field.

I had not been there long and did not want to look like a trouble maker and lose my job.

**GRAHAM
& ROSEN**
S O L I C I T O R S

01482 840201

www.graham-rosen.co.uk

2-4 George Street, Cottingham, HU16 5QU

Offices also at: 8 Parliament Street, Hull, HU1 2BB Telephone: 01482 323123



Yorkshire Water urges caution around reservoirs as weather warms up

Yorkshire Water is urging visitors to its reservoirs not to be tempted to enter the water to cool off as the weather warms up.

The warning comes after several tragic water-related incidents across the UK in recent weeks and an increase in reports of people entering Yorkshire Water reservoirs.

Gaynor Craigie, head of land and property at Yorkshire Water, said: "As the weather warms up it is important visitors to our reservoirs are not tempted to get into the water to cool off. Sadly, we've seen recently the dangers water can pose and it is important visitors to our sites understand entering a reservoir can be dangerous.

"Low water temperatures can cause cold water shock that may lead to hyperventilation, increased blood pressure, breathing difficulties and ultimately death. Underwater machinery and the currents associated with their operation are also a potential hazard for people choosing to enter the water.

"We recently backed the National Fire Chiefs Council's Be Water Aware campaign and would encourage those visiting our

reservoirs to do so safely, which means not entering the water and putting themselves at risk."

If visitors do see someone in the water who requires help, call 999 and ask for the Fire Service immediately – as crews are trained and equipped to deal with such incidents.

Haltemprice Lions (Innovative Activity)

Your local branch of the Lions International 'Haltemprice Lions Club' has been serving our community for half a century.

The donations raised by the club have not only supported local causes but have reached various corners of the world through Lion's International.

Our humble donations have helped the health services, individuals and families and communities through the collections made from various fund raising activities.

Normal club activities have been on hold like any other business due to the protracted mysterious invasion by the Covid-19. So, we have come up with the idea of raising funds out of Covid itself in order to help Covid affected families in the community.

In our 'Heart to Heart' series of Zoom talks we held a Zoom meeting on the 21st June 2021 making a public presentation talk by the eminent Consultant In Infectious diseases.

Dr Hiten Thaker talking on Mysteries of Covid.

The platform was open to the public and donations were made directly into the Haltemprice Charity bank account. The club expresses thanks to the community for their interest and contributions.

The innovation of Heart to Heart has added another dimension to the profile of the Club, generating more curiosity and interest in the club's activities in all section of the society.

Should you have interest in further talks, please contact our club secretary whose details can be found on the clubs website.



At Ella Bellini our selection of ladieswear includes stunning pieces for every occasion, size and budget. We work hard with fashion houses to create breath taking, creative collections

Open Tuesday to Saturday, we also offer out of hours shopping, please ask us to book you an appointment so you and your friends can have the shop to yourself!

Ella Bellini
180 Kingston Road
Willerby
HU10 6LX

01482 653 775
contact@ellabellini.com

Ella Bellini

Ladies Designer Fashion

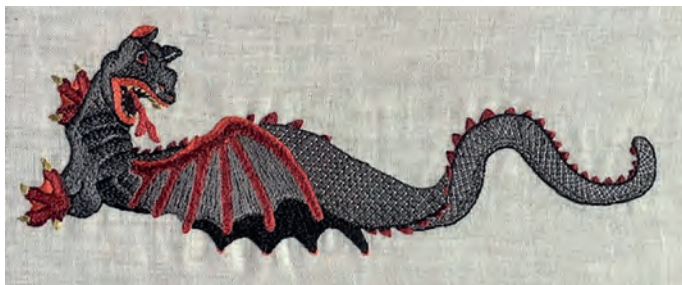
Our prices are amazing, with up to 70% off RRP on designer ladies wear across casual, evening wear and mother of the Bride/Groom

We stock most of the well-known fashion brands and also offer our own Ella Bellini range sourced from Milan in Italy





www.ellabellini.com



Hull and East Riding Broderers Embroidery Exhibition - 'Now we are one and twenty'

We are delighted to announce that we have arranged with **Burton Constable Hall**, Skirlaugh, East Yorkshire, HU11 4LN to hold our **21ST BIRTHDAY EMBROIDERY EXHIBITION** from the **20th July 2021 to 5th September 2021** in **THE COACH HOUSE GALLERY**.

Opening times will be 10am to 5pm, and there will be members there to demonstrate from time to time during the exhibition.

Please do come along and see the Dragon 'Inverted Wyvern', and his yoga-loving friends as well as many other embroideries made by our members both before and during lockdown. There is also a special display "Cabinet of Curiosities", based on the wonderful original Museum collection at Burton Constable Hall.

Visit to the Gallery is included within the admission price to visit the Hall. Please contact Burton Constable Hall for details and tickets.

For further information please email: herbyembroidery@gmail.com.

Finkles Boutique

Cotta Court, Cottingham

New Opening Hours
Tuesday, Thursday,
and Saturday
10.00 am to 4.00 pm

New stock now
arriving with
something for
all ages

"Use your local shops
Use them or
lose them"



Hear **CLEARLY** again...

Never miss out on the sounds you love

with the latest comfortable and invisible hearing aids



FREE
HEARING
TESTS

INVISIBLE
RECHARGEABLE
& SPECTACLE
HEARING
AIDS

WAX
REMOVAL
SERVICE

BRING THIS
ADVERT IN TO
CLAIM YOUR
SPECIAL HEARING
AID DISCOUNT*
or quote ref
COTI

- ✓ **EASY** parking
- ✓ **HOME** visits available
- ✓ **FREE** aftercare
- ✓ **5 YEAR** warranty*
- ✓ **5 YEAR FREE** batteries*
- ✓ **INDEPENDENT** family business



Hearing aids don't have to be seen!



HULL hearing CENTRE
independent hearing aid audiologists

TROUBLE HEARING THEN
CONTACT US TODAY!
www.hullhearingcentre.co.uk

Clare House, 8-10 Baker Street, Hull HU2 8HP

t: **01482 22 22 04**

**HOME & SMALL BUSINESS
COMPUTER SERVICES**

PC/LAPTOP SALES | REPAIRS & INSTALLATION
WIRELESS NETWORKS | STRUCTURED CABLING
DATA RECOVERY | VIRUS REMOVAL
INTERNET | EMAIL SETUP
HOME & OFFICE SUPPORT

**Call Steve Blake on
847711 & 571100
www.blakeits.com**

INSURED
CAR CHECKED
Microsoft
CERTIFIED
IT Professional

EXPERIENCE
25
YEARS
Microsoft
CERTIFIED
Technician

EVERFLOW
Plumbing Services

GENUINE 24-HOUR CALL OUT

- Boiler Replacements • Gas Servicing
- Breakdown and Repairs • Full Bathroom Installations
- Gas Central Heating • Systems Powerflushed
- General Plumbing Repairs • Landlord's Certificates
- No Job Too Small • All Areas Covered
- FREE No Obligation Quotations

Call Phil **01482 841304**
Mobile: **07970 359706** Cottingham

CORGI
520101
safe
520101

THE
BATHROOM
SANCTUARY

CONTACT
TEL: 01482 247321
26 KING STREET,
COTTINGHAM HU16 5QE
www.thebathroomsanctuary.co.uk

TIME FOR YOU
DOMESTIC CLEANING

**Would you like an Honest, Reliable
and Affordable police-checked*
cleaner to clean your home?**

- Service tailored to your needs
- Same cleaner each visit
- Typical hourly rate £13.50 (weekly cleaning)

Call Jan TODAY: 01482 977737
Mobile: 07930 241 087
hull@timeforyou.co.uk www.timeforyou.cleaning/hull

*police checked cleaner on request

12 July - www.cottinghamtimes.co.uk

Wordsearch - Alice in Wonderland

Can you find the hidden words. They may be horizontal, vertical, diagonal, forwards or backwards.

H S E N O N R E T T A H D A M W I C E E
A S T L I S F I S H F O O T M A N A P L
N E T R T T E U Q O R C F N I H G T E O
I P G R A R S S Y H S W A W E L Y E P H
D O D O A T U T O G P M A D E R T R P T
B O T T L E R T I G T I G T O O A P E I
G L M U L A H P K O N E G L C Q C I R B
D L G A P N A F O C H I I E U H E L G B
E O A A R E A F O O T M E O T R L I A
C M E S N C G W G G T M E A H N I A P R
A T K I S O H S H L N N N I L Y H R S W
R Y U N R B R H E I O I M E P F S D M H
S G B F I A O D A F T B K C U E E O A N
U E R A E R O X H R L E E I P V H R L O
C W K T B O D E I E E T R L P A C M L H
U L L O R R A C S I W E L A Y N H O C P
A L O U O R M U S H R O O M B K T U A Y
C I A P T C D U C H E S S O R B P S K R
O B I S D N A L R E D N O W S E I E E G
D R A Z I L G O L D E N K E Y E A T M E

Find the words in the letters above:

Alice, Baby, Bill, Bottle, Caterpillar, Caucus Race, Cheshire Cat, Cook, Croquet, Dinah, Dodo, Dormouse, Drink Me, Duchess, Eaglet, Eat Me, Fan, Fish Footman, Flamingos, Frogfootman, Glass Box, Golden Key, Grin, Gryphon, Guinea Pigs, Hedgehogs, King of Hearts, Knave, Lewis Carroll, Little Door, Lizard, Lory, Mad Hatter, March Hare, Mock Turtle, Mushroom, Pepper, Pig, Pigeon, Pool, Puppy, Queen of Hearts, Rabbit Hole, Small Cake, Tarts, Tea Party, Tears, Thimble, Watch, White Rabbit, Wonderland.

Wordsearch courtesy of <http://www.puzzles.ca/wordsearch.html>

Sudoku No. 168

This is an easy challenge this month - Answer on page 29

	7	5	3			8		
4		8		5		2	6	7
9								
		1	8	9	3			
						9		
7			5		2			
								3
	5		7		1		8	
1					4			6

Support the advertisers who appear within the Cottingham Times

MARIONOWENTRAVEL

July I know many of you are waiting for that treat of a holiday. Our day outings actually feel like a holiday it is really taking us back a few decades to the 60's when a day out may well have been your holiday. Anyway we just have to be patient and go with the flow.

I have come to understand that travel will not be simple for some time yet!

Please realise that if we are going to get you away then final travel arrangements will be a little later due to constant changes. June we operated a group of over 20 guests visiting Jersey, whilst 27 enjoyed a tour of Pembrokeshire admin was late, protocol was changing and time consuming whilst we got dizzy going around in circles. Anyone who is travelling has to understand that your itinerary may change even whilst you are travelling. Everything has to be looked upon as an adventure for the time being.

Our tall ship sadly has fallen by the wayside around the coast of Scotland but there are opportunities to sail aboard this Tall ship around the South Coast of England. Anyone interested please get in touch prices start at £849 for a 4 night experience.

Why not take the opportunity to tick something off your bucket list in the UK whilst waiting for the time to safely travel further afield?

24 September Chelsea Flower Show & Kew Gardens staying in the centre of London at the newly refurbished Strand Palace. London is great to visit at the moment as it is much quieter without the foreign tourists. £325pp for 3 days B&B with both entries.

10 July London & Hampton Court Flower Show 1 night dinner B&B a bargain at £129 pp if you are quick.

29 August, Bank Holiday - Highclere Castle better known as Downton Abbey 2 nights dinner B&B £225pp

Our own tour to see the Epic open air show Kynren, a tale of England dating back from 2000 years to the present time, 2 days, departs Saturday 7th August £199.

It does not look like we will be travelling to far around our globe even next year. Bookings are strong for Norway the Fred Olsen offer shown only has limited time ashore and mainly scenic cruising. I love Norway for the scenery sitting on deck just enjoying the moving backdrop of mountains and waterfalls is amazing. You see lots and do nothing, how relaxing can it get?

Don't forget if you are a regular cruiser with any cruise line you will still get your club benefits e.g Oceans with Fred Olsen when booking with Marion Owen Travel.

We book all holidays with all tour & cruise operators. Our wealth of first hand knowledge travelling around the world by land, sea & air allows us to make your travel simple & hassle free leaving you to relax and look forward to enjoying your holiday.

We welcome you to visit our office Monday to Friday 10am to 2pm but available over the telephone at all other times. We look forward to creating your special memories when we book your next holiday whether a break in the UK or a far away holiday to any corner of our world. It is great to get back to exploring and enjoying wonderful adventures even in the UK.



Marion

Our very own exclusive holidays by coach, experience the difference

Travel with Marion direct from the East Riding

25 Jul	Westonbirt Arboretum plus Kiftsgate Court gardens 2 days inc dinner B&B + 1 light lunch	£ 215
04 Aug	East Lincs Railway day outing, sumptuous lunch	£ 75
07 Aug	Kynren weekend break to see this epic show	£ 199
31 Oct	Isle of Wight, Victorian Christmas. A special tour of the island inc Osbourne house DBB Bourne Hotel. 6 days	£ 649
14 Nov	Newcastle - city centre hotel with dinner B&B 2 days	£ 125
16 Nov	Thursford Christmas Spectacular 2 days D B&B	£ 199
18 Nov	Harewood house & Christmas Market Or add an afternoon tea in the Billiard Room!	£ 49 £ 75
26 Nov	Festive weekend with Gin & Wine dinners - 3 days Staying in historic Leatherhead on the River Mole.	£ 299
02 Dec	Thursford Christmas Spectacular single only	£ 225
06 Dec	Harewood House with Afternoon Tea	£ 75
11 Dec	Polar Express premium seats, theatrical experience for all ages, PJ's & dressing gowns are suitable attire	£ 85
2022	Tours are growing and more in the pipeline...	
14 Jan	Boundary Mills January sales just for the day	£ 20
16 Jan	Northern Lights flying from Humberside 4 nts from	£ 989
27 Jan	Scotland & a Burns celebration - 5 days DBB+	£ 369
20 Mar	Ilfracombe, a great itinerary inc. RHS Rosemore 4 Star Carlton Hotel - 6 days dinner B&B	£ 529
17 Apr	Floriade & Keukenhof - 5 nights sailing from Hull	£ 599
02 May	Somerset Explorer—5 days dinner B&B	£ 499
17 May	APT Croatian Coastal cruise & Zagreb 8 nights fm	£2345
08 Jul	APT Russian River cruise 10 nights from	£2995
21 Nov	Holly & Mistletoe at the 4 star Tynedale hotel in Llandudno 5 days of fun and amazing food DBB+	£ 465

JERSEY From your door. The island offers fabulous beaches, great walking opportunities, duty free shopping & is steeped in history.

7 nights half board at the Mayfair - Humberside flights
Departs Saturdays every week until 16th September plus other hotels available please call for details



**Fred Olsen
Cruise Lines**

Preferred
Booking
Agent

Arctic Norway & Midnight Sun

Sail from Newcastle & enjoy
amazing scenic cruising
Sit back & relax and enjoy the scenery
6th June 9 nights from £1399
Free drinks package or
£125 pp on board spending money
Travel from your door £75 per person



For bookings & info Tel: 01482 212525 www.marionowentravel.com

Sorry for the inconvenience our office door for visitors at 23 Portland Street, HULL, HU2 8JX is only open as below.

Prices shown subject to availability at the time of booking. Based on 2 sharing unless otherwise stated. Single travellers welcome please ask for prices.

Office hours for telesales: Mon to Sat 9am - 4pm office open to visitors: Mon - Fri 10am - 2pm

THE BEAUTY CLINIC
EST 1995

Beauty & Skincare Specialists
01482 875329
www.beautycliniccottingham.co.uk
104A KING STREET, COTTINGHAM

ADVANCED NUTRITION PROGRAMME
jane iredale
DECLÉOR PARIS
ENVIRON
CICI

kitchensolutions
Door and Worktop Replacement Specialists

- Over 80 door styles and colours
- Made to measure, Any size doors,
- Worktops, Sinks & Taps, Appliances
- Tiling, Plumbing, Electrical work
- All work guaranteed

Transform your kitchen at affordable prices

Free no obligation quote call **01482 841551**
www.kitchensolutions-hull.com

We'll make sure that everything is properly covered for you

Call 707 800

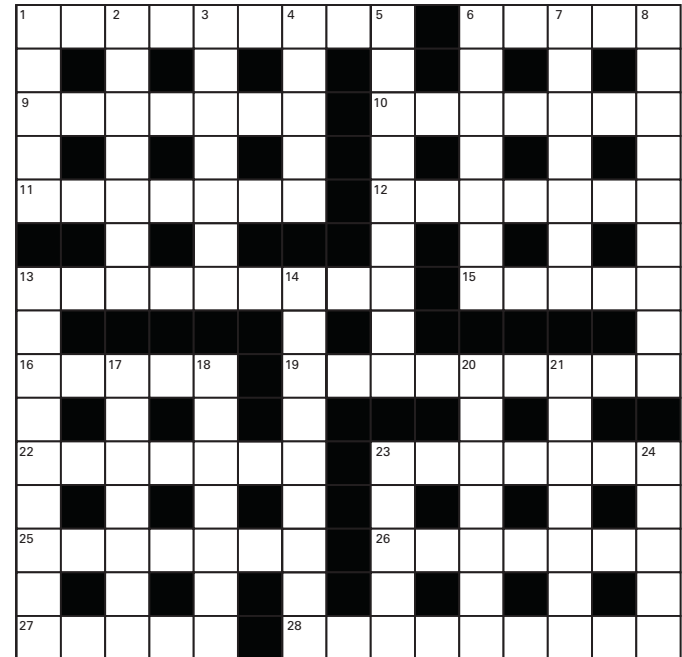
Hedon Insurance
Serving East Yorkshire for 50 years (1969-2019)

and ask for :
Sally, Lee or Alex

Home Insurance
Motor Insurance
Taxi Insurance
Travel Insurance
Funeral Plans
Landlords Policies

Our offices are now open again, if covid precautions are observed
Offices : 97 King Street Cottingham, Hull, Hedon & Hornsea
Hedon Insurance is Authorised & Regulated by the Financial Conduct Authority

Crossword - Solution on page 29



Across:

- Heavy showers (9)
- Ledge (5)
- Place or locate (7)
- Harsher (7)
- A herb of the mustard family (7)
- What coins do in pockets (7)
- A nearby galaxy (9)
- Ringworm bush (5)
- Whipping, clotted or ice (5)
- Gorgeous (9)
- Cleanse (7)
- 9 in a baseball game (7)
- Vampire count (7)
- A series of chirps (7)
- Barfs (5)
- Spattered (9)

Down:

- Thorny flowers (5)
- Uttered monotonously (7)
- Hair soap (7)
- Baking appliances (5)
- Pot or grass (9)
- Narrows eyes (7)
- A military unit (7)
- Prevent (9)
- Honors (9)
- Cause self-conscious distress (9)
- Teach (7)
- Spiritualists (7)
- Stress (7)
- Burial ceremony (7)
- Become liable to (5)
- Full of flavor (5)

Crossword courtesy of www.crosswordpalace.com

Support the advertisers who appear within the Cottingham Times



COTTINGHAM DENTAL PRACTICE



A natural smile is genuine and warm, and puts those around you at ease. The best smiles are always the healthiest ones.

We provide a range of treatments to help you improve and maintain your oral health.

www.cottinghamdental.co.uk

A popular private dental practice.

Find us on Facebook
@CottinghamDentalPractice

Call **01482 848655** to make your first appointment – we look forward to meeting you!

**Now welcoming new patients:
We are here to help you smile
with confidence**



**Celebrating
20 YEARS
Established 2001**



Let The Season Commence Local Beekeeper Neil Gower continues his quarterly review

Funny old weather

At the beginning of last year's lockdown at least we had some nice weather to soften the blow of confinement. The spring of 2021 has been quite the opposite and the avid BBC 'Springwatch' viewers will have seen what the cold, wet weather has done to the mating bird population. The poor old Bluetit seems to have been badly affected.

This type of weather also affects the honeybee at a time when colony build up is essential. The queens are laying eggs as fast as they can, and the workers need to be out foraging for pollen to feed the grubs and nectar to convert into honey as food for the expanding brood. I read that May 2021 was one of the wettest on record and that certainly curtailed a good deal of colony activity.

It also impacts on the Beekeeper as it prevents us from being able to carry out our regular hive inspections. It is this time of the year that we judge the general health of each colony, how they have come through the winter, are they well fed and do we need to treat them for any disease. I managed to work round the weather and pick times to inspect when the showers subsided and the temperature was warm enough for me to remove the hive roof without chilling the colony. All the colonies I had expected to make it through the winter did so, and my disease control in the autumn meant that they were also in good health.

Swarming season

Spring is also the time of year for the colonies to swarm. It is quite a natural occurrence and it's the female worker bees who decide that they want a new queen to lead the colony for any number of reasons. They select freshly laid eggs and begin to construct several much larger cells than normal from beeswax into which they add royal

jelly. This ensures the selected Queen grubs grow much larger than either the female worker bees or the male drones. At this point the existing Queen knows what is afoot and begins preparation to leave the colony.

Allowing a hive to swarm can be quite a problem for us beekeepers as the existing queen usually leaves the hive with around half of the bees in the colony and that will put a stop to any hopes of a honey harvest that season. To prevent this from happening we use a tactic known as artificial swarming.

I spotted the tell-tale signs in my main colonies during my regular hive inspections. The workers had started to construct a queen cell, so I located and removed the existing queen and placed her in an empty nucleus hive with a frame of food, a frame of brood (sealed eggs/grubs), some bees and some pristine frames with wax foundation. This is a sheet of beeswax which has been stamped with hexagonal depressions of exactly the right size onto which the bees will add their own beeswax from glands in their abdomen to form cells for the queen to lay her eggs in.

In this way we trick the existing queen into thinking that she has swarmed, and we trick the rest of the original colony into thinking that the queen has swarmed and left, whilst maintaining the vast majority of foraging workers to collect nectar for conversion to honey.

A few days later one of the new queens should emerge in the original colony. Her first job is to seek out and destroy any other queen cells as there can only be one queen.

A few days later she will emerge from the hive and fly off with all the male drones following her to a drone cloud where as many males as possible will try and mate with her.

Once she returns, the only time she will leave the hive again will be to swarm.

I have created two colonies from one, have reared a new local queen, and have retained the honey flow in the original hive. I believe that's known as a win-win.

I've relocated the nucleus hive with the original queen to another site and she's begun the task of building up her new colony.

Honey harvest.

It's quite normal at the end of June or the beginning of July to harvest some honey from the first flow of the season. I haven't taken any honey off the hives as I am quite conservative about how much I'll harvest, and I'm also of the view that the slow start to the season due to the weather has certainly impacted my bees.

I'll report further on this, and any Asian Hornet sightings in my next article.

Support the advertisers who appear within the Cottingham Times

Welcome, BEYONDSM

MORE SPACE
MORE LUXURY
MORE CONNECTED



Celebrity **X** Cruises®

YOU CAN GO ANYWHERE WITH TEAM EARLE

TRANSATLANTIC CRUISE

12 nights | 12 October 2022

Celebrity Beyond
Departs Manchester

Itinerary:

Day 1: Barcelona, At Sea, Seville (Spain)
Day 2: At Sea
Day 3: Seville (Spain)
Day 4: Lisbon (Portugal)
Day 5: At Sea
Day 6: Ponta Delgada (Azores)
Day 7: At Sea
Day 8: At Sea
Day 9: At Sea
Day 10: At Sea
Day 11: Royal Naval Dockyard (Bermuda)
Day 12: At Sea
Day 13: Cape Liberty (New York)

Includes Always Included:

Classic Drinks Package, wifi and tips

Balcony Stateroom From **£2,770pp**

Based on two people sharing
(other cabin options available)

CARIBBEAN CRUISE

8 nights | 8th January 2023

Celebrity Beyond
Departs Heathrow

Itinerary:

Day 1: Pre-Cruise stay in Miami
Day 2: Fort Lauderdale (Florida)
Day 3: At Sea
Day 4: At Sea
Day 5: Philipsburg (St Maarten)
Day 6: Charlotte Amalie (St Thomas)
Day 7: Puerto Plata (Dominican Rep)
Day 8: At Sea
Day 9: Fort Lauderdale (Florida)

Includes Always Included:

Classic Drinks Package, wifi and tips

Balcony Stateroom From **£2,400pp**

Based on two people sharing
(other cabin options available)

'Due to evolving health protocols, some imagery and messaging may not accurately reflect current onboard and destination offerings, or the public health standards and government requirements that modify or limit these offerings. Onboard and destination experiences, features, itineraries, and guest conduct rules vary by ship and destination and are subject to change without notice.'

MAKE AN APPOINTMENT WITH ONE OF OUR SPECIALISTS TODAY...

Terms and conditions apply, ask for details. Prices correct at time of going to press and are subject to availability.

Prices based on two people sharing unless otherwise stated.

HULL:
81 Fernway,
Hull, HU2 8LD
01482 581 888
hull@andrewearles.co.uk

BROUGH:
Unit 2 Welton Road,
Brough, HU15 1AF
01482 334 545
brough@andrewearles.co.uk

ANLABY COMMON:
274 Hull Road,
Anlaby Common, HU4 7RR
01482 581 777
anlaby@andrewearles.co.uk



WWW.ANDREWEARLES.CO.UK



ON THE GRAPEVINE

WITH ROY WOODCOCK

Morrison's Soave and Roberts & Speight, Beverley

Small on price, big on quality . . . that's Morrisons Soave 2020, a crisp and refreshing summer drink that triumphed at the annual International Wine Challenge, being awarded an impressive 92 points, a Silver medal and a Great Value White under £8 award.

This put it ahead of an iconic wine of the region, Pieropan La Rocca Soave Classico; which, at £30 a bottle is more than six times the price of Morrisons £4.25 offering.

The International Wine Challenge sees thousands of wines from all over the world blind tasted by a panel of experts. The judges' tasting notes described the wine as "Lemon sherbet and cream on rose. Textured, round and soft with great balance and subtle, yet lingering flavours, on the finish."

I enjoyed a bottle during a back garden family lunch on the hottest day of the otherwise washout month of May - salads, crusty bread, cheese and meat boards - and it went down a treat.

Overall, the supermarket is on a roll at the moment, taking home one gold, 20 silvers, 49 bronzes and 33 "commended's" at the wine challenge.

The gold was awarded to The Best Amarone 2017 (following a gold at last year's International Wine & Spirit Competition), while other highlights included a silver for The Best Cremant de Limoux, which has been on offer for just £10, down from £12, but unfortunately that offer finished on June 1.

Three brand new additions to the range - The Best Vinho Verde, The Best Gavi di Gavi and The Best Alto Adige Pinot Grigio - won bronze medals before they even launched in stores.

Mark Jarman, Head of Wine Sourcing at Morrisons said: "We pride ourselves on offering our customers fantastic quality wines for affordable prices. The silver award given to our own-brand Soave exemplifies this; it may have a small price tag, but the judges still appreciated its balance, distinctive nose and lasting finish. We're delighted that so many of our wines have been recognised at this year's competition."

It's always good to hear from independent wine merchants and we're lucky to have Roberts & Speight in Beverley and House of Townend in Melton/Hull. As well as discovering something a bit different from the usual supermarket fare, staff are always knowledgeable and only too willing to take time out to discuss wine and make recommendations. And even though it is part of a chain I would bracket the Beverley branch of Majestic with those comments, too.

So, even though they are based way down South, it was lovely to hear from Hampshire-based independent wine merchants Wine Utopia for the first time recently (visit <https://m2.wineutopia.co.uk>).

Ahead of International Rosé Day on June 25 (who knew?) they were telling me the popularity of rosé shows no sign of abating, with sales soaring alongside the temperatures. It seems wine drinkers can't get enough, and like to share their rosé experience too - there are more than 4.5 million Instagram snaps tagged #rosé!

Provence still holds sway in the rosé kingdom, with wines made principally from Grenache, Cinsault and Syrah. Typically you'll find notes of red berry fruit, (grapefruit) citrus and white flowers in these wines, and a crisp elegance. But take off your Provence rosé blinkers and there's a world of other exciting rosé waiting to be discovered. Pinot Noir from England, Malbec from Argentina, Sangiovese from Tuscany. And more.

I asked them to pick two favourites for me (see best buys)

Finally, this month, I make no comment on the news that the demand for low and no alcohol beverages, while still small, is on the rise, although it's claimed that wine is missing out on the opportunity, compared to beers and spirits.

In a presentation given at the London Wine Fair, Lulie Halstead, from research company Wine Intelligence, said that although 39 per cent of UK wine drinkers are actively moderating their alcohol intake, the demand for low and no alcohol wine is static and may even be going backwards.

The growth of low and no alcohol drinks that some had claimed was coming, will not come from wine, she said. In fact compared to before Covid, she felt there is currently less opportunity for low and no alcohol wines to succeed.

Even though more people are aware of the options, they are less likely to buy them, she said.



BEST BUYS

**Viña Leyda Reserva Syrah**

Where: Co-op

When: Now

Why: I was lucky to get a bottle for Father's Day; hence I recommend it. Viña Leyda is Chile's leader in the production of cool coastal climate grape varieties and this wine has great aromatic intensity, revealing its cool-climate character. The use of a respectful and elegant oak enhances the spectrum of fruit, making it an appealing match for the delicate flavours of pork loin or steak.

£10.00

**Waitrose No1 St Hallett Barossa Shiraz**

Where: Waitrose

When: Now, until July 27

Why: Juicy blackberry fruit flavours are complemented by elegant layers of subtle pepper and spice, all framed by smooth, velvety tannins. It's a great match with rich beef or roasted vegetable dishes.

£9.99 (was £13.49)

**Mirabello Pinot Grigio Rosé 2020**

Where: Independents, including Wine Utopia

When: Now

Why: Maybe hard to find, although Wine Utopia do mail order. From north-west Italy, strawberry and bramble aromas lead on to delicate, yet juicy, red berry characters on the palate - with slight creaminess, and a crisp, dry finish. An excellent value alternative to Provence Rosé wine, jam packed with flavour

£7.95

**Boutinot Les Cerisiers Rose 2020**

Where: Where: Independents, including Wine Utopia

When: Now

Why: Pricier, but delicious. A classic salmon pink rosé with delicate perfumed aromas of rosehip syrup, wild berry blossoms and cherries on the nose. Full flavoured, ripe and beautifully balanced with acidity, there's elegant, textured, berry fruit on the palate with a twist of raspberry freshness to lift the finish. Serve with light lunches, grilled fish, vegetable antipasti or as a delicious summer apéritif in the garden.

£11.95



Melanie Watson of Skidby Livery Stables with the latest of her monthly articles

www.instinctivehorsetraining.co.uk

The things which make life all the more worthwhile

The end of May could not come quick enough this year as we all anticipated the birth of our new foal. I say “we” because everyone of my livers and staff members were all just as excited as myself!

Bang on her covering date, my lovely mare Kiera foaled down another lovely colt foal by Big Star. He is such a cutie of course. Full brother to Kouros from last year but a totally different colour. Kouros was very dark from day one and is now a very dark bay in his adult coat. New baby “Creed” is a bright bay with lovely black fringes, gorgeous fluffy ears and no white markings anywhere.

He is a poppet of cause and has won over everyone’s hearts. Kiera is an awesome mother and has the most perfect life for a horse really. Motherhood makes her feel complete and it shines out from her. She is very affectionate with people and craves as much attention as Creed so we always make sure it is not all about the foal. Kiera has done the hard work after all. 😊 I do hope you enjoy the pictures.

I am blessed with loyal clients and appreciative customers stretching back over very many years who must have nominated me in a national event designed to say thank you to Equine professionals UK wide. I discovered that I have been selected as a finalist in The Equestrian Business Awards 2021 for the “Behavioural Trainer of the Year” category. Whether I win or not matters not. I feel humbled by the efforts so many must have gone through on my behalf and thank everyone sincerely. I really appreciate their support and has put real joy in my heart.



Support the advertisers who appear within the Cottingham Times

**40 YEARS
SERVING
YOUR PETS**

72 Castle Road, Cottingham, HU16 5JG
Telephone: 01482 843631

We now deliver around Cottingham and surrounding area free of charge. Please contact the above number for further details.

Stockists for all leading brands for dogs, cats, horses and small animals. We also have a large stock of wild-bird feeders and seed.

www.cottinghamtimes.co.uk - July 19



Here comes the sun . . .

Who doesn't like this lovely weather we are having at the moment with plenty of time to walk our pets. Dogs do love a good frisbee throw in the park, a fast game of fetch in the garden or a romp on the beach. They seem happy, dashing around with tongue lolling and slobber dripping and many dog owners figure their dog will know when to stop. But that's not the case. Dogs are so excitable and very playful, they just keep on going and often don't feel the effects of overheating until it is too late. We MUST take that responsibility and know when enough is enough and allow the dog to rest with plenty of cool water.

Dogs also like to go along on car rides but they should NEVER be left inside a parked car. Even in weather that seems cool, a vehicle can quickly become a deadly 'green house'. Did you know that on an 85-degree day, it takes only 10 minutes for the interior of your parked car to climb to 102 degrees and in half an hour, it can reach 120 degrees? Leaving windows partially open does not help to cool things down inside. To make matters worse, dogs have a higher body temperature than people and they don't cool down as efficiently as we do. The car body is designed more for insulation from the cold than for cooling down. We have sweat glands all over our body, but our dogs are confined to their nose and the pads on their feet. A dog that is hot can only normalize their body temperature through panting. This doesn't get the job done under extreme conditions and because they do not sweat, are actually at higher risk of heat stroke than humans, who perspire over most of their body. Panting, quickly passes air through the moist tissues of the dog's mouth and cools it, much like a breeze on a sweaty face cools a human. This is a form of evaporative cooling and that's where

most of the slobber comes from in a panting dog. If a dog begins to get too hot, their breathing increases to panting but when their body heat climbs faster than the panting system's ability to cool itself, heat stroke becomes a threat.

So, what are some of the signs of our pets overheating?

Profuse and rapid breathing, bright red tongue, drooling, glassy wide eyes and vomiting /diarrhoea.

If you think your pet is suffering from heatstroke, you need to take IMMEDIATE action as well as contacting your vets.

Move them immediately to a cool area - either shade or preferable air-conditioned area. Are they conscious and panting? If so, offer small amounts of water but do not pour into the mouth. Place cold, wet towels over their body, remove quickly and re cool the towels. Turn a fan on them. It will speed up the cooling process.

Cats are also susceptible to heat stroke. As well as the above points, you may also look out for;

Restlessness to find a cool spot, plus staggering, vomiting/lethargy.

Once again, if you think your cat is suffering from early stages of heat stroke, the same IMMEDIATE action must be taken, as in our canine friends.

It is critical to your pet's health, to cease all measures as soon as it becomes apparent that treatment is working. Their body temperature will continue to drop after the treatment stops, and then they will become in danger of it becoming too low.

PLEASE NOTE: ALL THE ABOVE ARE GUIDELINES. MEDICAL ATTENTION SHOULD BE SORT IF THIS OCCURS.

Now what can we do to help prevent all the above happening? Most of it is common sense! Take for instance our canine friend being left in a car, as described previously. Would we sit in a tin can or go for a midday walk, wearing a fur coat in 90 degrees heat? No, so if going shopping LEAVE your dog at home! Always make sure plenty of fresh clean water is available at all times, exercising (in moderation) only during the cool parts of the day. In extremely hot weather, don't leave your dog standing on the street and keep walks to a minimum if you must go out. His paws can burn since they are not protected by shoes so the jumping around is not them being impatient but their pads are melting. Also consider your dog whilst on the beach. Yes, it is lovely for you to enjoy it whilst you can but you are in bare feet. Have you ever stood on sand on a hot day? It is not pleasant. Please be sensitive to old and overweight animals in hot weather plus those with heart or lung diseases who should be kept indoors as much as possible. Always provide shelter if outside or bring your pet inside during the heat of the day and let them rest in a cool part of your house. As for rabbits, you could always spray their ears with cool water. Please avoid soaking the full body, this is because thick wet fur may encourage FLY-STRIKE (a condition where blue bottles lay their eggs, then maggots hatch out and feed off the rabbit's skin.) Give frozen treats - take bananas or apples and cut into chunks and freeze. For many rabbits this equates to an ice cream in the heat, they love it! Rabbit hutches should always have a cool, shady spot and place frozen plastic bottles of water in the hutch for them to lie against. My rabbits love this.

Please also do not forget to apply sun screen to the tips of the ears and noses of your pets if they have white fur. Unlike other coloured coats, pets with white fur have a thinning of hair on these areas so are susceptible to sun burn and later on skin cancer (just like in humans) as I sadly found out with my white cat, Bisley. He had the top of his ear removed after skin cancer was diagnosed due to being a sun worshipper.

ONCE AGAIN, If you do happen to find your pet in the above situations, please seek IMMEDIATE MEDICAL attention. Do not hesitate to ring any one of our KINGSTON surgeries where our dedicated staff will be on hand to give the necessary advice.

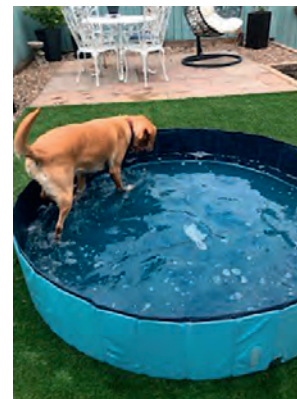
ONE SOBERING THOUGHT, NO DOG HAS EVER DIED FROM NOT HAVING A WALK.

AND FINALLY...TALI....

Like everyone, walks have been kept to a minimum and the coolest parts on the day, 6.30am before work and 8pm but her favourite past time of all is chasing bubbles in the paddling pool. Watching her having fun going round and round and round whilst staying cool, beats any walk (see pic).

UNTIL THE NEXT TIME, STAY SAFE BUT ENJOY THE WEATHER.

Support the advertisers who appear within the Cottingham Times



Park Street - 01482 223688
Beverley Road - 01482 854422
Holderness Road - 01482 797007



Anlaby - 01482 655333
Cottingham - 01482 843210
Thorngumbald - 01964 301607

**East Riding
Employment
Education
Skills**

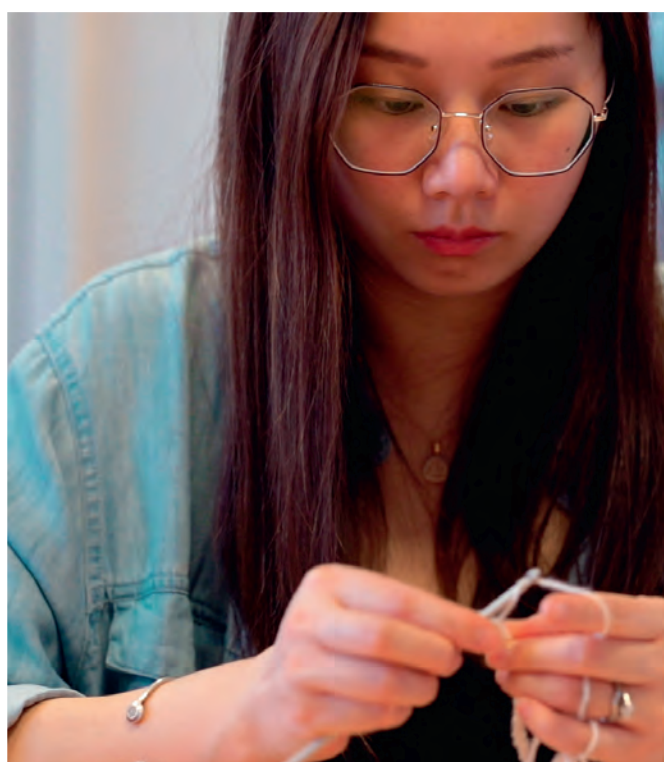
Learn for free!

There are still spaces available on lots of our free taster courses this July - but they're filling up fast, so don't leave it too long if you want to book.

You can choose to learn in our Cottingham centre, or virtually online - whichever suits you best.



**Try July - sign up
to a single taster
session for free!**



Cookery (V)
Aboriginal art (C)(V)
Mexican folk art (C)
Optical art (C)
Pop art (C)
Creative writing (C)
Pottery (C)
Interior design (C)
Patchwork and quilting (C)
Photography (C)
Spanish (C)

Presentation software (C)(V)
Recognising scams and associated risks (C)(V)
Spreadsheets (C)
Using a computer (C)
Preparing yourself for virtual learning (V)

Healthy chats (C)(V)
Mental health awareness (V)
Managing stress (C)
Mindfulness (C)(V)
Psychology (V)
Working in care (V)
New you, new goals! (C)
Self esteem and confidence building (C)

Speaking confidently in public (C)
Understanding neurodiversity (C)(V)
Supporting teaching and learning in schools (C)(V)

Courses with a (V) are virtual; those with a (C) take place in our Cottingham centre

**www.eastriding.gov.uk/learn
(01482) 842329**



EAST RIDING
OF YORKSHIRE COUNCIL

Funded by

Education & Skills
Funding Agency





“The Tooth and Nothing but The Tooth”

by
**Chris ‘ Dr. Smile
Maker’ Branfield**

It’s Hygiene Jim, but not as we know it

Hello again, I hope that you are safe and well. Another busy month has flown by. We’ve had some cracking weather which was a welcome change after all the long, drawn-out cold stuff. I’ve never lost my thirst for learning, but this last two weeks has been mad with three evening courses per week. All good stuff though, and a lot of it I’ve done before so very good for reassurance and confirmation. Any new top tips are always an added bonus. As I’ve said before, it’s having tools in your box for different situations.

Lock Down Gum

Getting back to all aspects of dental therapy now for some months, we have noticed quite a few people having a decline in gum health. We are also seeing many new patients with gum disease. My son, Edward, leads our gum (hygiene) department and he introduced to me a great bit of equipment that is considered the best on the planet for professional teeth cleaning and gum therapy along with laser therapy for advanced problems. The kit is expensive at about six times more than a conventional ultrasonic scaler but looking at the science and evidence along with the



improved patient comfort during use I could not say no, so we got one of the EMS airflow master units. It was an immediate success for our patients with great feedback. Edward loves it. Then COVID hit and we could not use it. For a while it was back to old fashioned hand scaling (scraping). This is better than not cleaning but not as therapeutic or gentle as the Airflow unit.

Good News And Geek Alert

The Airflow unit is back, hoorah. Again, patients are so pleased about it. The use of a gentle powder stream to remove staining, biofilm and soft tarter often is enough to do the trick. If needed an ultrasonic component can be used to remove thicker, more mature tarter. The unit warms the water to make it more comfortable and the ultrasonic oscillations are set up in such a way to be more efficient with less vibration so improved comfort. Not only that it had an intelligent sensor that increases the power when needed and then reduces it when not.

This blew my mind. Is it just me?

Not A One Trick Pony

The important thing to make gums healthy is to remove plaque bacteria and especially the associated endotoxin that causes inflammation and damage. Now, the bacteria in plaque are not floating about but become a mature biofilm and that is why mouthwashes alone do not work. Think of the gelatinous biofilm in the pipes in the bathroom. It’s like a little city of gangs of bacteria and wells structured with channels for food in and waste out. It’s yucky stuff. The air and powder stream of the airflow very effectively and

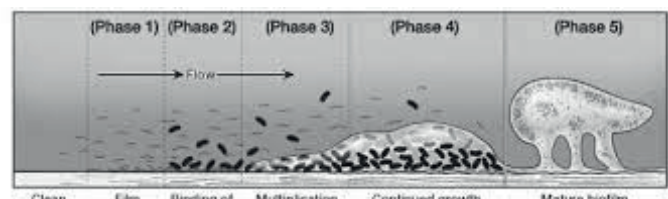


Figure 6.9. Five Phases in the Formation of a Biofilm. Phase 1, the acquired pellicle coats the tooth surface. Phase 2, initial colonizers attach to the tooth surface. Additional bacteria coaggregate with the initial colonizers in Phase 3. Phase 4 is signaled by the formation of the extracellular slime layer. Phase 5 is a mature biofilm.

gently removes the biofilm.

There is another really, great benefit; stain removal. It removes staining without scratches. Using harsh abrasives to remove stains causes scratches and roughness that encourages further staining. So, the cycle continues. The Airflow leaves a smoother surface, so reduces the staining process.

It Time To Sort Those Gums

As I alluded to earlier this last year has taken its toll on gums. Lack of hygienist visits, maybe less attention to home maintenance and stress. All factors. Good gum health is so helpful to reduce overall inflammation in the body and inflammation induced illness and pathology. Well, there is a better way to help. We are always looking for better ways. That’s were we get our buzz.



Chris



Until next time. Take care and be good.

Chris Branfield is Principal Dentist at Castle Park Dental Care, Castle Villa, 28 Castle Road, Cottingham, telephone 01482 772550. He has been in dental practice for 28 years and has a special interest in Life Changing, Pain Free Dentistry with Dental Implants, Teeth Straightening and Cosmetic Dentistry. And, not only that Chris is founder member and trustee of Dental Mavericks charity- ending the daily dental pain of Moroccan kids. For more patient success stories and Chris’ Humanitarian work go here now www.castleparkdental.co.uk.



**Save yourself from the suffering of
ill-fitting dentures!**



**Let us help you love
your smile again—a
dental implant is as close as
it gets to a natural tooth,
both in function and in
appearance.**

“I am so pleased I went ahead. The team have reassured, supported and delivered a first –class, quality service. From the reception team to Chris himself, the team have been super! The success of my treatment has helped me to keep my smile, confidence and personality—thank you!” Ian P., Hull.

**Call us now on 01482 772562
to start your transformation journey.**

Christopher Edward Branfield GDC Reg No 68346.

Castle Park Dental Care is a Private Dental Practice. Registered in England. Company No. 06703803

    #TogetherEastRiding



Let's get back to it, East Riding.

Get your COVID-19 jab if you can, shop local and stay safe.

We've got this.



EAST RIDING
OF YORKSHIRE COUNCIL

Find out more about saving lives, visit
www.eastriding.gov.uk/3stepstosafety

Motoring - with Roy Woodcock



Star of the new Jazz Age!

Roy Woodcock reports on the top-of-the-range crossover model unveiled as part of the latest-generation Jazz from Honda

IF you needed any further proof that the crossover craze has taken a firm grip on the car market the new Honda Crosstar surely provides it.

The fact that the Japanese car maker felt compelled to create a jacked-up version of its popular and hugely practical compact hatchback is a sure sign that these pseudo-SUVs are here for the foreseeable future.

The Crosstar sits at the top of the newly-revamped Jazz range offering, says Honda, a more youthful appeal that is aimed at buyers with "active lifestyles" - a phrase much liked by motor industry marketing folk which appears in the advertising blurb for any number of similar vehicles.

The Jazz has been around since 2001 and gone through three previous generations - but none have been quite like this one.

The Crosstar rides 30mm higher than the rest of the range, as well as being slightly longer and wider, and the fashionably rugged SUV-style presence is created with the addition of a bolder grille, black cladding to the wheel arches and sills, integrated roof rails and silver and black two-tone, 16-inch alloy wheels.

Crosstar buyers can also opt for a model-specific surf blue paint job with a contrasting black roof, while on the inside the upholstery is water repellent - presumably for all those outdoorsy types.

Power comes from a newly-developed hybrid system comprising two compact electric motors connected to a 1.5-litre petrol engine, a lithium-ion battery and a continuously variable automatic transmission.

When pootling around town, the Crosstar switches automatically between electric-only EV mode and hybrid drive to maximise efficiency with the petrol engine taking the full load at highway speeds, supplemented by an extra boost from the electric motors for sharp acceleration.

Shifts between the three modes are seamless and the car is punchy and responsive to drive, with an indicator on the instrument panel telling the driver when EV mode is in operation.

The only issue is the engine roar as the CVT catches up when you ask for a quick turn of pace - but this is an affliction of all cars which employ such transmissions and when driven more sedately the Crosstar is pleasingly refined, as you'd expect of a hybrid.

The extra height means a little more body roll in corners

than with a normal Jazz and the ride is a little firm and jittery over poorer road surfaces but otherwise comfortable.

Fuel economy and emissions also both take a slight hit when compared to the standard car but at 58.9 miles per gallon on average and 110g/km respectively they're still respectable and mean running costs should be low.

Inside the Crosstar has all the roominess and practicality of the rest of the range and for which the Jazz has become rightly renowned.

Space in the rear is particularly good for a supermini and the rear seats also feature cinema style flip up bases - dubbed magic seats by Honda - as well as 60/40 split backs which fold flat in the more usual way, creating a lot of load carrying versatility in such a compact car.

You can only have the Crosstar in range-topping EX trim so you'll be paying a flagship price of £23,385 before you start adding metallic paint and any accessories you might fancy.

However, that obviously buys you range-topping equipment as well and the Crosstar is bristling with some pretty decent kit for a small car.

A nine-inch touchscreen infotainment interface incorporates digital radio, navigation and Apple and Android smartphone connectivity as well as a rearview camera, while the audio system is an upgraded one featuring eight speakers.

You also get heated front seats, climate control, keyless entry and ignition, adaptive cruise control, automatic emergency braking, lane keep assist and traffic sign recognition.

Of course, all of that, except the upgraded audio system, also comes on the standard Jazz EX which is £1,200 cheaper. Whether the fashionable SUV trappings are worth that much extra will ultimately be a personal choice.

FAST FACTS

Honda Jazz Crosstar 1.5 i-MMD EX CVT

Price: £23,385

Mechanical: 109ps, 1,498cc, 4cyl petrol-electric hybrid engine driving front wheels via automatic gearbox

Max speed: 107mph

0-62mph: 9.9 seconds

Combined mpg: 58.9

Insurance group: 19

CO2 emissions: 110g/km

BiK rating: 26%

Warranty: 3yrs/90,000 miles



Support the advertisers who appear within the Cottingham Times

Thinking of volunteering?

Good for you.

Cottingham Scouts are on the lookout for volunteers to support the next generation and give young people the opportunities they need to develop skills for life.

At Cottingham Scouts, we are do-ers, makers and give-it-a-go-ers. Yes, we go camping, hiking, swimming, climbing and kayaking. But we also get to hang out with our friends every week – having fun, playing games, working in a team and taking on new challenges.

We are made up of a Beaver colony (aged 6-8) who hop, skip and jump their way through lots of different games and activities; two Cub packs (aged 8-10½) who take part in lots of interesting and challenging activities; and a Scout (aged 10½-14) & Explorer (aged 14-18) unit who go on adventures and conquer the small task of changing the world.

We're looking for more people to lend a hand and make this possible for even more young people in Cottingham. After over a year of being stuck in our homes, everyone wants to get out and about, meeting up with friends and experiencing the great outdoors.

This has meant we're seeing a growing waiting list for our Beaver section and more Cubs wanting to join too.

Scouts happens when a lot of us give a little. You're not signing up for a lifelong commitment – just to help out, when and where you can. We'd love it to be once a week, but we work around your work and family life. Plus, volunteering's not just about giving something back. It's also about doing something that's good for you.

Continued on page 29



SUPPLIERS OF QUALITY BESPOKE KITCHENS, BEDROOMS & BATHROOMS

30-32 Northgate, Cottingham. Tel: phone 01482 844114
Fax: 01482 841821. www.inputkitchens.com
sales@inputkitchens.co.uk

input kitchens of Cottingham

Facebook, Google+, Twitter, Instagram icons

Dignified funerals

At the lowest price locally. **Guaranteed**

★★★★★
Customer rated
Powered by Text



Funerals from £1,299
Direct Cremation from £975

A Shepherd & Sons
Call 01482 947 357

62-64 Beck Bank, Cottingham HU16 4LH

We can help and support you to arrange a funeral that is still special for you and your loved one whilst adhering to the current social distancing guidance.

dignityfunerals.co.uk/ashepherd/cottingham

Our Price Promise. We regularly check our competitors prices and are confident we are unbeaten locally. To give you further peace of mind, we also promise to match any local prices you may find after arranging your funeral with us. We guarantee to match any funeral quote from another funeral director that is within 5 miles of our location. Terms & conditions apply.

Dignity
FUNERAL DIRECTORS

Support the advertisers who appear within the Cottingham Times

www.cottinghamtimes.co.uk - July 25



July is often one of the hottest months of the year and a great time to sit out and enjoy your garden. Keep your plants looking good by regularly dead-heading and you'll enjoy a longer display of blooms. Make sure you keep new plants well watered and hoe off weeds, which thrive in the sunshine. Not only can we enjoy our plants in the Summer we can also relax and unwind in the garden on the warmer evenings with a chimenea, garden furniture or even a few bbqs.



A guide to watering and feeding your garden

If you want a healthy garden with an abundance of flowers, watering and feeding are essential. Without water, plants will simply wilt and die. A complete fertiliser or specific nutrients are essential – particularly for plants growing close together. But when should you water and feed?

During long hot dry spells, plants definitely need water – but make sure this is given at the right time and in the right way. Plants need to be fed during periods of active growth – not when it could encourage new growth later in the season.

How to water

- **Watering cans:** Use one fitted with a fine watering can rose. This leads to less soil disturbance and possible root or plant damage.

- **Sprinklers:** Try not to use them in hot sunny weather as this can cause leaf scorching. More importantly the water applied has more time to be absorbed in the soil when applied in the cool of the evening or in the early morning.

- Trickle or soaking hoses: deliver tiny amounts of water over an extended period of time.

- **Root Watering:** Sink 5–8cm diameter pipes or plastic soft drink bottles with the bottoms cut off in the soil next to trees or shrubs, or in containers. Top these up with water on a regular basis.

Watering Tips

- It's better to soak plants from time to time rather than watering little and often.



- Make sure water gets right down to the roots, by placing the hose or watering can spout at the base of a plant and water gently. If soil is very dry, water twice.

- Do not water plants too forcefully. Never direct a jet of water at the base of a plant as it will wash away the soil, exposing the roots. Make a hollow around the plant base and fill with water.

- Re-use 'grey water' from baths and sinks or recycle rainwater by using a water butt.

New Plants

New plants need a good deal of care and attention to help them adjust to their new surroundings and grow well.

- When planting new plants, prepare the soil to ensure they get enough water and food.

- Dig the soil between 25 and 50cm deep. This will let in air and water to prevent root suffocation.

- Add some water-retaining gel or try some well-rotted manure, garden compost or peat alternative, as these will act as a sponge, retaining water.

Lawn Irrigation

- If grass does not spring back after it has been walked on, water as soon as possible, as long as there isn't a drought!

- If it is very dry, spike your lawn with a fork before watering.

- The quickest way to water your lawn is to use a sprinkler but to ensure you don't over-water in one place, place a jar next to your sprinkler and move it once the jar has 2.5cm of water in it.

10 Jobs for this month

1. Place Conservatory plants outdoors
2. Regularly de-weed your borders and keep on top of weeds
3. Dead head bedding plants and repeat flowering perennials
4. Paint sheds, decking, fencing and furniture while its dry
5. Spray roses with fungicide to ward against black spot and mildew
6. Be water wise, use your water butt and keep on top of watering bedding in particular
7. Feed your lawn, particularly if you didn't do a Spring feed
8. Look out for Scarlet Lily beetles on your Lilies before they ruin them
9. Also keep a look out for other pests as they thrive in warm weather
10. Chop lupins, delphinium and poppies down once they have finished flowering



Caring for Containers

Like new plants, those in pots and hanging baskets need special care as they run out of water more quickly than established border plants – which have bigger root systems and more soil from which they can reach water.

- Add water-retaining granules or gel (right) to compost in pots and place a small pipe or plastic bottle in the compost to help with root watering.

- Aim to keep the compost moist at all times, watering daily in hot weather.

- If the compost looks pale, has shrunk away from side of the pot, or if plants are droopy and wilting, stand the container in a bucket or pan so that it can soak water right up into the compost.

Dealing with drought conditions

Attach a water butt with a tap to your drainpipe to collect rainwater.

- Keep borders well weeded as weeds compete for moisture.

- A 5–7cm protective layer of mulch such as compost, cocoa shells, bark or even gravel spread on the soil between plants reduces evaporation.

- Stop sprinkling lawns in drought – in autumn they will recover!

- Hoe weeds at the roots to save time and avoid disturbing the soil and increasing water loss from the surface.

- Leave grass clippings on the surface of the lawn after mowing to recycle nutrients.

Different Plant foods for different plants:

- **Shrubs & trees** –Bonemeal when planting in autumn/winter; Growmore in spring/summer.

- **Bulbs** – Bonemeal after flowering.

- **Bedding plants** – fortnightly general liquid feed.

- **Container plants** –general liquid feed weekly in spring/summer.

All living things need food and water and plants are no exception. They need a mixture of the following three main types of plant food:

- **Nitrogen** promotes leaf growth.

- **Phosphates** help roots develop.

- **Potash** increases production of flowers and fruits and improves fruit flavour. It also increases winter hardness. They also require trace elements of calcium, boron, iron, magnesium and manganese. By applying a range of garden fertilisers, you can ensure your plants receive sufficient food to perform to their full potential. Some specific plants need tailored cocktails of fertilisers – roses are a good example.

INORGANIC FERTILISERS: Those manufactured from a chemical process or mined. Today these are formulated into compound fertilisers that release a balanced amount of nitrogen, phosphates and potash over a period of time. There are dedicated fertilisers that supply just one of the elements and these can be used to correct any specific deficiency. They are applied as a

dry powder or in granule form in spring, at the manufacturer's recommended rate. Some act quickly, other slow release types release small amounts over a long period. Some are available in both dry and liquid forms – liquids are applied from late spring to early summer.

- **Sulphate of Ammonia** –contains concentrated nitrogen.

- **Sulphate of Potash** –a good source of potassium.

- **Growmore** – a good balanced fertiliser.

- **Sulphate of Iron** – for acid loving plants.

ORGANIC FERTILISERS: Derived from vegetable or animal matter, they are often slow-acting so apply them in good time.

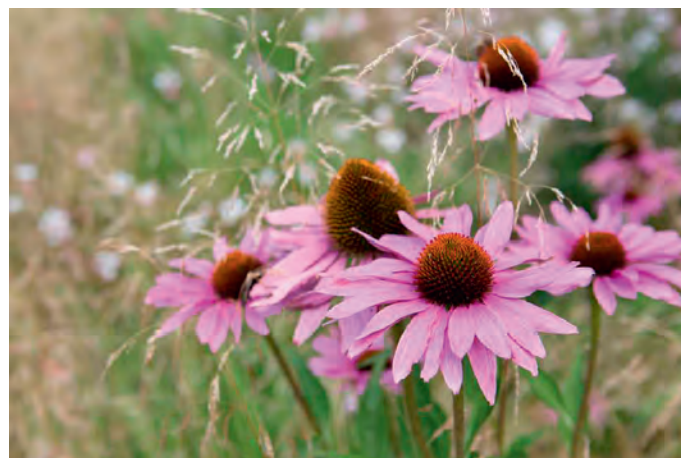
- **Mushroom compost**– contains a range of nutrients.

- **Liquid seaweed extract** – contains nitrogen, potash and phosphate.

- **Bonemeal** – a good source of phosphate.

- **Wood ash** – contains a small amount of potassium.

- **Fish, blood & bone** – a general fertiliser, containing phosphorus, nitrogen and potassium.



NEWSTAR SECTIONAL BUILDINGS

Est. Over 40 years

OPEN 7 DAYS A WEEK

Open Sundays

11.00 am - 3.00 pm

- Concrete Garages and Sheds
- Greenhouses, Summerhouses, Cabins
- Playhouses, Dog Kennels, Garden Structures, Log Stores
- Base Laying & Removal of old Garages & Sheds
- Full Delivery and Erection Services
- Refelting of Existing Sheds



**FREE
LOCAL SITE
SURVEYS**

Corner of Ash Grove & Beverley Road, Hull HU5 1LT
(Opposite Blind Institute)

TEL: 01482 444256

sales@newstarbuildings.karoo.co.uk

www.newstargardenbuildings.co.uk

STROUDS

of Cottingham

Handbags, Wallets, Purses, Accessories and much more



Gifts to suit all ages & budgets

Find us at: 149 Hallgate, Cottingham HU16 4BB

Telephone: 01482 845 600

Website: www.stroudsbags.co.uk



Yorkshire Accountancy

**QUALITY ACCOUNTANCY SERVICES
AT AFFORDABLE PRICES**

**NOW ON
HALLGATE**



info@yorkshireaccountancy.co.uk
123 Hallgate, Cottingham, HU16 4DA
www.yorkshireaccountancy.co.uk
01482 845750

Your Stars for July 2021

By Kay Gower

Aries (Mar. 21- April 20)

This month, good things happen in your personal life. Financial good luck is also featured in the weeks to come. Plans you make now are foundational, success depends on taking your time and getting those plans right.

Taurus (Apr. 21- May 21)

The sun entered your 3rd solar house last month so you can still expect a few more weeks of coming and going. There are potential gains to be made (around the 6th/7th), simply by being in the right place at the right time.

Gemini (May 22-June 21)

What you need to heal you isn't complicated or expensive. It's not a grand life event or a sweeping gesture. The act that will help to heal you is as simple, small and free as laughter. July brings change. Let it in with a smile, it's going to be good.

Cancer (June 22-July 22)

Every traveller along life's highway needs to rest every now and then. Your body may be telling you that you could also use a bit more tenderness and care. Figuratively, it's time to pull over and fuel up. Do it sooner rather than later.

Leo (July 23-Aug 22)

Sometimes loved ones and friends treat you like you're an on-call problem solver. Take the pressure off yourself. Sometimes you just don't have the answers. Perhaps it might be a good idea to go AWOL for a couple of weeks.

Virgo (Aug 22 - Sept. 23)

The social secret that takes the pressure off of any interaction is that others are thinking primarily about themselves. All you have to do this month is show up with that charming smile and nod along.

Libra (Sept. 24 -Oct. 23)

A curtain closing doesn't have to mean the end of the play, so don't let it be a disappointing experience. More than likely, the curtain will open again after a complete change of scenery has occurred. Sit back, relax and enjoy the rest of the show -July is going to be good.

Scorpio (Oct. 24 - Nov. 22)

You will be on a roll all month, and this energy will continue to build just as long as you don't interrupt it. Stay focused on what's going great in your life, and those great happenings will just keep on rolling.

Sagittarius (Nov. 23 -Dec. 21)

You'll have your say and speak your truth and then be tempted to elaborate on it. It takes restraint to stop when you're ahead, but that's precisely what you should do. Sometimes, short messages ring the loudest.

Capricorn (Dec 22.- Jan. 20)

Jupiter transiting your 3rd house over the coming weeks helps to strengthen your contact with family and friends. Communications are better than usual, and you begin to attract positive influences into your life.

Aquarius (Jan 21 - Feb 19)

While trying to appear normal, you may come across as a bit eccentric. That's because only eccentric people have to think about what "normal" really is and try to achieve it. If you haven't figured it out yet - all the best people are a little eccentric. Enjoy it.

Pisces (Feb. 20-Mar. 20)

"If I could turn back time..." sang Cher. Perhaps you want things the way they were, but no matter how hard you try, there really is no going back and besides, you're much wiser now, use the past to build a new future.

Crossword solution from page 14

1	R	A	I	N	S	T	O	R	M		S	H	E	L	F
	O		N		H		V		A		O		C		O
9	S	I	T	U	A	T	E		10	R	O	U	G	H	E
	E		O		M		N		I		I		E		E
11	S	I	N	A	P	I	S		12	J	A	N	G	L	E
		E		O					U		T		O		T
13	A	N	D	R	O	M	E	D	A		15	S	E	N	N
	C						M		N						L
16	C	R	E	A	M		19	B	E	A	U	T	I	F	U
	O		D		E		A				E		U		
22	L	A	U	N	D	E	R		23	I	N	N	I	N	G
	A		C		I		R		N		S		E		A
25	D	R	A	C	U	L	A		26	C	H	I	R	R	U
	E		T		M		S		U		O		A		I
27	S	P	E	W	S				28	S	P	R	I	N	K
															L
															E

Sudoku Answer from page 12

2	7	5	3	4	6	8	1	9
4	3	8	1	5	9	2	6	7
9	1	6	2	7	8	3	4	5
5	6	1	8	9	3	7	2	4
3	8	2	4	6	7	9	5	1
7	9	4	5	1	2	6	3	8
8	4	7	6	2	5	1	9	3
6	5	9	7	3	1	4	8	2
1	2	3	9	8	4	5	7	6

Continued from page 25

Research shows that it improves your wellbeing and helps you build career-boosting skills. This is because you'll be connecting with the community, meeting new people, learning skills for life that look great on a CV like leadership and teamworking, and most importantly having the chance to have fun.

Scouts is open to everyone, no matter your age, gender or beliefs. All you need is to be over 18 and allow us to complete a DBS check to ensure our young people remain safe.

You don't need to be Bear Grylls to volunteer, you don't even need to have been a Scout (or Guide). We're just looking for passionate people that want to do something that good for young people, and good for you too, because lending a hand at Cottingham Scouts is a two-way street. So, whether you are an activity-planner or tidy-upper, a skill-sharer or sandwich-maker, we'll give you the support and any training you need to shine.

What are you waiting for? Get in touch at cottinghamsl@gmail.com or visit cottinghamscouts.co.uk/volunteer to find out about how volunteering can help you.



COTTINGHAM MEMORIAL CLUB
NEW MEMBERS WELCOME



Pleasant social club, open seven days per week with comfortable Lounge and Bar, reasonably priced drinks, excellent catering and five full-sized snooker tables, plus a regular calendar of social activity. Membership is open to Male and Females 18 years and above.

JOIN IN JULY £10.00

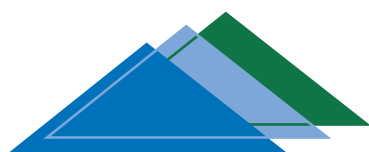


Contact@CottinghamMemorialClub.co.uk

<https://cottinghammc.wordpress.com/>

<https://www.facebook.com/cottinghammemorialclub/>

Elm Tree House, Finkle Street, Cottingham HU16 4AU - 01482 842415



www.premierroofing.co.uk

24 HOUR CALL OUT

Fast, Friendly Service

Premier Roofing Ltd.

Domestic & Commercial • Felt Roofing • Fibre Glass

• Fascias • Soffits • Rainwater Systems • Tiling • Cladding

TELEPHONE: 01482 571870/07813 118129



David Hockney, Normandy art

For so many of us, last year meant a new and unexpected familiarity with our homes, as we grappled to take yet another Zoom meeting at the kitchen table. But for the man who is arguably the world's greatest living artist, working from home meant something entirely different...

David Hockney might be 83, but his advancing years have never stopped him from regularly rebooting for a fresh new take on the world around him.

In late 2018, he was in London for the dedication of a stained glass window he'd designed for Westminster Abbey (and yes, that was another first for him – he'd never worked in stained glass before).

Not fancying the long flight back to his home in Los Angeles, he decided instead to take a break in northern France with his partner and studio assistant, Jean-Pierre Gonçalves de Lima, affectionately known as JP.

The pair motored down to Normandy, the beautiful northwestern region of France with which we Brits have long had a love-hate relationship – it was, after all, the Normans who invaded Britain in 1066.

"When we arrived, we watched the marvellous sunset for three hours, and I said to JP that it would be very nice to draw the arrival of spring in Normandy," Hockney told the Los Angeles Times in December 2020.

The idea had echoes of two previous projects he'd undertaken. 'The Arrival of Spring in Woldgate, East Yorkshire' in 2011 became a huge hit at the Royal Academy

as a gallery installation comprising one huge oil painting and 51 smaller works created on his beloved iPad.

Images from the exhibition can be seen in the epic 'A Bigger Book'. Published by Taschen, this 'sumo' book is Hockney's 'definitive visual autobiography', covering his work from 1953 to 2016.

The other project, which also resulted in a Taschen book – this time just a little smaller, so officially a 'baby sumo' – was 'My Window', which followed the changing of the seasons as seen from the artist's window.

But back to Normandy. Hockney is nothing if not decisive, and it didn't take long for him to decide that he wanted to make a home there for himself, JP and their dog, Ruby.

They bought the first place they looked at, in Honfleur (it was 'cheaper than anything in Sussex', the artist reported): a timbered farmhouse amid four acres of rural land with a handy outbuilding that was quickly converted into a studio. It also has several welcoming fireplaces – a glowing image of one of those graced the front cover of the The New Yorker magazine in December.

And that was where they were when the world

went crazy in early 2020. Somewhat typically, Hockney's first response to the pandemic and subsequent lockdown was to issue a joyous and vibrant iPad image of daffodils in bloom, jauntily entitled 'Do Remember They Can't Cancel The Spring'.

It was the first of many images of the seasons passing through Honfleur that will form the basis of an exhibition at London's Royal Academy of Arts from 27 March to 22 August 2021: David Hockney: The Arrival of Spring, Normandy, 2020.

The Royal Academy says: "David Hockney RA is one of the most important British artists of the 20th century – and he remains one of the most inventive.

"This new body of work – 116 works in total – has been 'painted' on the iPad and then printed onto paper, with Hockney overseeing all aspects of production."

"Made in the spring of 2020, during a period of intense activity at his home

in Normandy, this exhibition charts the unfolding of spring, from beginning to end, and is a joyous celebration of the seasons."

"Opening exactly a year after the works were made during the global pandemic, this exhibition will be a reminder of the constant renewal and wonder of the natural world – and the beauty of spring."

He also has plans for 2021 for yet another innovative exhibition in Paris which will pay tribute to one of his own personal favourite artworks – the Bayeux Tapestry, now displayed in the Musée de la Tapisserie de Bayeux in Bayeux, less than an hour's drive from Hockney's current home.

In these difficult times, Hockney's joie de vivre and positive outlook is an inspiration to us all.

"The only real things in life are food and love in that order, just like our little dog Ruby. I really believe this and the source of art is love. I love life."



197 Hallgate
Cottingham, HU16 4BB

*Art*market

01482 876 003
www.artmarket.co.uk



David Hockney

MY WINDOW

Hockney's window to the world

NOW AVAILABLE AT THE ARTMARKET GALLERY

197 Hallgate
Cottingham, HU16 4BB

*Art*market

01482 876 003
www.artmarket.co.uk

Support the advertisers who appear within the Cottingham Times

www.cottinghamtimes.co.uk - July 31



Open 7 Days a Week

Enjoy our COVID Secure Garden Centre



Open as usual

The Old Glasshouse Cafe

Inside & Outside Dining **OPEN**



COLETTA
& TYSON
NURSERIES AND GARDEN CENTRE

TEL: +44(0)1482 865410

www.colettagardencentre.co.uk

Find us on Social Media @colettaandtyson



324 Hull Road, Woodmansey, Beverley HU17 0RU