

Cottingham Times

and District

Issue 127 - June 2012

STEPHEN RICHARDSON

PLUMBING, HEATING & GAS SERVICES

Approved Worcester-Bosch Installer

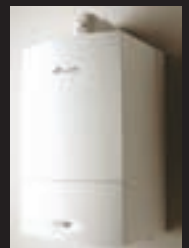
**All Worcester-Bosch Boilers installed, come with a 5-year
Parts and Labour Warranty - Get Peace of Mind until 2017**

**Some boilers with a 7-year Parts & Labour Warranty
available until the end of June 2012**

Call for your FREE, No Obligation Quotation Today



218388



Tel: 01482 876145 - Mobile 07779 887769

33 St. Margarets Avenue, Cottingham, East Yorkshire HU16 5NQ

HALLGATE LANDSCAPES LTD

ENDYKE LANE, COTTINGHAM

Also visit our Show Centre - Rear of 146 Hallgate (Alterframe), Cottingham

BLOCK PAVING SPECIALISTS

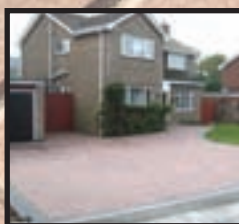
DRIVES PATIOS PATHS

Aggregates Supplied:-
**SAND,
SAND & GRAVEL
TYPE 1 STONE
CRUSHED BRICK
TOP SOIL**

**Walls Built, Turfing, Trees Felled/Pruned
Demolition Work, Fencing Erected, Concrete Bases
Drives Gravelled, Planting Trees and Shrubs**

Established 1985

**Tree Logs
£3.00**
per bag
Minimum
Delivery
10 Bags



**Top Soil
and
Compost
£1.50**
a bag

ALL WORK FULLY GUARANTEED

**FREE
QUOTES**

**Contact Brian -
T: 01482 846069/M: 07885 242773
COTTINGHAM**

**FREE
QUOTES**

google.hallgatelandscapes
(Formerly BJD Landscapes)

THE COTTINGHAM TIMES

1 Forge Place, South Rise, Skidby, Cottingham HU16 5UL
Telephone: 01482 840035

Editor: Keith Teale

Published Monthly by: The Cottingham Times

Enquiries: Advertising

Tel: 01482 840035 - Fax: 01482 840035

Editorial and Contributions

Tel: 01482 840035 - Fax: 01482 840035

Accounts: Tel: 01482 840035 - Fax: 01482 840035

Website: www.cottinghamtimes.co.uk

E-mail: media@cottinghamtimes.co.uk

Cottingham Times is a totally independent publication with no financial help from any other source.

The views expressed in the Cottingham Times are not necessarily those of the editor. Copyright of the entire magazine contents is strictly reserved on behalf of the Cottingham Times and the authors. No part of this magazine may be reproduced in any form without prior written consent of the Cottingham Times.

Disclaimer

Whilst every effort is made to ensure the accuracy of the dates, event information and advertisements, events may be cancelled or event dates may be subject to alteration and the Cottingham Times can accept no responsibility for the accuracy of any information or claims made by advertisers included within this publication.

Notice to Advertisers

Trades Descriptions Act 1968. It is a criminal offence for anyone in the course of a trade or business to falsely describe goods they are offering.

11,000 Copies Printed Monthly

Looking for Window Blinds?
All Types of Blinds Supplied - Vertical / Roller / Venetian / Roman



Conservatory Specialists
5YR Guarantee on all products

UKBlindsdirect
www.ukblindsdirect.com
info@ukblindsdirect.co.uk

ALL blinds Measured & Fitted **FREE**
Call us for a no obligation quotation
01482 840238

Ann at Elizabeth of Cottingham
52 Finkle Street
Cottingham. Tel: 841246

Stockists of OscarB, Emreco, Chianti and many more
Sizes 10 to 20
Our warm, friendly staff are always welcoming and on-hand to assist you

Up to 20% OFF WITH THIS VOUCHER
(Conditions apply. Not in conjunction with any other offer or discount)

OPEN MONDAY - SATURDAY 9.30 am - 4.30 pm



D. WILLIAMS Established over 27 years
Plumbing and Heating (Cottingham)
Plumbing - Heating - Bathrooms - Tiling

Full Bathroom Installations
• Tiling • Electrics • Building Alterations • Joinery

Central Heating
• Full Systems • Boiler Changes

Plumbing and Gas
• All Plumbing Work • Gas Cookers
• Gas Fires • Servicing to all Gas Appliances

 
176180 176180

Tel. 882552 Mobile 07721 366343



In Cottingham and District

St. Mary's Church, Cottingham

St. Mary's Coffee Shop is open daily Monday to Saturday 10.00 am to 12 noon, in the Mark Kirby Hall (behind the Church) Tea, Coffee and Hot Chocolate all 50p (including biscuits). A warm welcome ensured.

We also have S.A.L.T. Lunch (Share a Lunch Together) every Tuesday in the Mark Kirby Hall, 12.00 noon to 1.30 pm.

Mary's Village Pop In - The small hall at the Village Hall, Skidby
Tuesdays and Fridays 10.00 to 4.30 pm. Adults, Children and Young People Welcome. Call in at any time for a drink and a chat. Tea, Coffee, Hot Chocolate, Biscuits, Crisps and Sweets.

AgeUK East Riding

Every Friday 10.00 am to 11.30 am, call in to Cottingham Methodist Church, Hallgate, Cottingham for free information and advice on a wide range of issues. Ask about our befriending service, now available for Cottingham residents and other services available. Tea and Coffee available. Telephone 01482 869181 for further details.

Cottingham Rangers AFC

Are one of the biggest football clubs in the area. We have a mini-soccer academy for 4-8 year olds and run teams for under 8's through to mens, as well as girls teams and now have an Ability Counts Section. Founded in 1972 the club offers sporting opportunities for the local community. Contact Simon Ecclesley, Club Chairman on 01482 840367 or visit our website www.cottinghamrangers.co.uk.

Zion United Reformed Church, Hallgate

Every Thursday morning, term time. From 9.30 am to 11.30 am. Tea and Coffee are available and there is a book stall. It all takes place in the Church Hall, situated at the back of the Church, access by a passage at the side of the Church.

Viewfinder Photographic Society

Meets Monday evening every week in the Skidby Village Hall. Secretary: Mr. Peter Smith, 149 Grovehill Road, Beverley. Tel. 01482 867450.

Scottish Country Dancing Club

Every Monday - Beginners (for 1st hour), and experienced dancers of all ages welcome. National Associations, fully qualified teacher. Further further information just turn up, or telephone Gordon Campbell on 849387 or Joyce 871790. 7.30 pm to 10.00 in the Zion United Reformed Church Hall, Hallgate, Cottingham.

Fitmums and Friends Running and Walking Club

The club meets at the Pavilion, King George V Playing Fields Wednesdays at 7.00 pm; Fridays 6.15 pm. Buggy Run: Thursdays 1.00 pm. Mondays at the Blue Kangaroo, Finkle Street, Cottingham at 9.45 am. Suitable for men and women of all ages (over 18) and fitness levels.

Play Badminton

On Tuesday and/or Thursday evenings at Cottingham High School, 8.00 pm until 9.30 pm during term time. £2.00 per evening. For more information telephone Dave 01482 842855.

Front Cover Picture: A view down across Hallgate from the top of St. Mary's Church Tower. Photo by John Dewing, 6a Queens Close, Cottingham. Telephone 847140.

STEPHEN RICHARDSON



PLUMBING, HEATING AND GAS SERVICES

Time-Served Plumber :: Ex-British Gas Technical Engineer



218388

- Gas Central Heating
- Boiler Replacements
- Gas Servicing
- Solar Water Heating
- Breakdowns, Repairs
- Bathroom Suites
- Systems Powerflushed
- Systems Upgraded



**Beat Rising Gas Prices
Have a New
Condenser Boiler
Fitted NOW**

All Plumbing Work Undertaken

Tel: 01482 876145

Mobile: 07779 887769

33 St. Margarets Avenue, Cottingham, East Yorkshire HU16 5NQ



218388

Cottingham Bridge Club

Every Friday evening at the Darby and Joan Hall. Duplicate Bridge, for more information telephone 845873.

Jubilee Craft Fair and Vintage Tea Room

Sunday 3rd June - At the Village Hall, Skidby from 10.00 am to 3.00 pm. A wide variety of crafts will be available, as well as plants, painted furniture, and sweets and treats. Refreshments all day, using our lovely vintage china. Raffle. This is the day of the "BIG LUNCH" so come along and join us, tell your friends, bring your Mums. This event will be supporting Marie Curie Cancer Care and entry is free. Telephone 849128 to book a table (non-food). Also on Monday 4th June we will be opening for Coffee and Cake from 10.00 am to 1.00 pm in the Village Hall. Proceeds to Marie Curie Cancer Care.

Macmillan Cancer Support

Monday 4th June - Every Cuppa Counts Day, East Green, Main Street, Skidby. 12 noon to 4.00 pm. We would love to see you, come and enjoy a traditional British Afternoon Tea, listening to Swing and Big Band Music and some friendly chat. Childrens' Games and Tombola.

East Yorkshire Embroidery Society

Saturday 9th June - Jennie Rayment - All tucked up - folded patchwork, in the Darby & Joan, Finkle Street, 2.15 pm. Members £1.50; Visitors £2.50 including refreshments. Yearly membership £6.00.

Cottingham Catholic Women's League

Monday 11th June, Blue Placques - a talk by Paul Schofield, in the Garden Room, Holy Cross RC Church, Carrington Avenue, Cottingham at 7.30 pm.

Cottingham Women's Institute

Tuesday 12th June - ACWW Hazel Armstrong. Competition: Royal Memorabili for the Diamond Jubilee, at 10.00 am upstairs at the Civic Hall, Cottingham. *Lift available.*

Cottingham Ladies Circle

Wednesday 13th June - Mr. Whitton - Weddings, Wonders and Blunders, in the Zion United Reformed Church, Hallgate, at 7.30 pm.

Hull Savoyards

Saturday 14th, 15th and 16th June - "*The Sorcerer*" will be performed at the Middleton Hall, Cottingham Road, Hull. Tickets are £8.50 with £7.50 concessions. Family tickets arer £20.00 for two adults and up to three children. Tickets available at the door or contact 01482 876918. Performances commence at 7.30 pm on Thursday and Friday, with a Matinee at 2.30 pm on the Saturday.

Cottingham Green Women's Institute Evenings

Thursday 14th June, Speaker: Tomoko Miyari "Aspects of Japanese Life", in The Darby & Joan Small Hall, Finkle Street, at 7.30 pm.

U3A

Thursday 14th June - David Pattison - A Funny thing happened at University, at 2.00 pm in the hall at the Darby Joan Hall, Finkle Street, Cottingham.

Inland Waterways

Friday 15th June - Social evening with a walk along part of the Market Weighton Canal. Meet at Landing Lane, Broomfleet, HU15 1RE at 7.00 pm. For further details email roger.bromley@waterways.org.uk or telephone 01482 845099.

North Ferriby Gardening Club

Monday 18th June - North Ferriby Gardening Club will be visiting Thwaite Hall Gardens, Cottingham. Meet at 7.15 pm for a conducted tour, admission by donation to Thwaite Hall Gardens Fund. For further information contact Mal on 01482 632282.

Continued on page six

Support the advertisers who appear within the Cottingham Times

Four Generations giving 100 years Family Service

Herbert 1893-1962 Eardley 1908-1986 Geoffrey 1939 David 1964

Funerals respectfully conducted :: Personal Attention
Limousines :: Home & Abroad :: Private Rest Rooms Available

H. KEMP & SON LTD

Funeral Directors

(Established 1893)

259-261 HALLGATE, COTTINGHAM

YORKS HU16 4BG

Telephone (01482) 844695



❖ Golden Charter Pre-Paid
Funeral Plans Available ❖



PAINTER & DECORATOR

25 YEARS EXPERIENCE

QUALITY WORK

TEL: 01482 876743 (COTTINGHAM)

**DAISY
DECOR** 

ALL WORK CONSIDERED - NO JOB TOO SMALL
ALTERNATIVE TEL NUMBER: 07929 216172

Why not visit the New Look

**Cheval
Cafe**

*now seats up to 50 people
in a relaxed atmosphere*

Open 7 Days a Week 9.00 am to 5.00 pm

**WE NOW SELL FREE RANGE EGGS
FROM OUR OWN CHICKENS**

Fresh Vegetables - Homemade Produce to takeaway

Function Room now available for Hire

Ideal for Wakes, Meetings & Small Parties.

Fishy Fridays

**NOW SERVING
Wines :: Beers :: Spirits**

Coming Shortly NEW Spring Menu

Green Lane, Beverley Road, Willerby HU10 6NT
Opposite Total Fitness

Tel: 01482 654968 - 07799 437283

or visit www.chevalcatering.co.uk :: email: deb99geg@aol.com



Cottingham Day

Come along and decorate a cup cake or cookie - Children will love this activity why not learn from the professionals?

Available in our Chocolate Shop **LIQUID CHOCOLATE**
Try a delicious cup full of delicious melted Belgian Chocolate
with flavoured sprinkles of your choice. **YUMMY!!**

Cup Cakes!!!

Another opportunity to buy our delicious flavoured
cup cakes only pre-made for special events in Cottingham

Choices include:
• **Lemon Meringue**
• **Double Chocolate Chip** • **Marshmallow** • **Very Berry**
• **Chocolate Orange** • **Cheese Cake** • **and much more . . .**
*For more information about our cakes or classes
please contact us at*

Sugar 'n' Spice Cakes Ltd.
175 Hallgate, Cottingham
Tel: 01482 669277 :: Mob: 07764 951592
www.sugarnspicecakes.karoo.co.uk



Suppliers of quality bespoke
kitchens, bedrooms & bathrooms

input of Cottingham kitchens

30-32 Northgate, Cottingham
Telephone 01482 844114
Fax: 01482 847828
www.inputkitchens.com
sales@inputkitchens.co.uk

Continued from page five

Cottingham Evening Townswomen's Guild

Wednesday 20th June - Billie Lee - Cruising the Amazon, at 7.30 pm in the Darby & Joan, Finkle Street.

Diabetes UK

Thursday 21st June - Dr. D. Hepburn (Consultant Diabetologist), Meetings held in the Boardroom, Castle Hill Hospital, Entrance 1B, Cottingham. 7.30 pm - 9.00 pm. (Free Parking). All Diabetics, carers, family and friends are welcome to attend. Please phone 01430 422064 for further information.

Friends of Thwaite Gardens

Sunday 21st June - Diamond Jubilee Open Evening. 6.00 pm to 9.00 pm (with guided tree walk at 7.00 pm). Feel free to bring your own picnic. Admission only a £1.00 - Children under 16 no charge.

Westfield School Association

Friday 22nd June - A warm invitation is made to everyone to come and support Westfield Primary School at our Annual Fund Raising Summer Fair. Lots of fun activities for the children, including Go-Karts, plus a bar and barbecue for the adults. Free entry.

Cottingham Wildlife Watch

Saturday 23rd June - Spurn Point, meet at the visitors centre. 12 noon to 2.00 pm. No charge for Watch members to park, but a donation would be appreciated for the Yorkshire Wildlife Trust. Lighthouse visit, beach walk, bird watch and talk by Andy Gibson YWT Outer Humber Officer.

Dagger Lane Singers

Saturday 23rd June - The Dagger Lane Singers present their Summer Concert, at St. Mary's Church, Cottingham, at 7.00 pm. Special guests include Julian Savory, Ben and Jackie Pieper and Leslie McKay.

East Riding Flower Club

Monday 25th June - Pam Alexander (Northumberland), Flower demonstration 'Wood, Glorious Wood'. In the Civic Hall, Cottingham at 2.00 pm. Doors open 12 noon. Visitors: £5.00 at the door.

Cottingham Ladies Circle

Wednesday 27th June - AGM and Supper, in the Zion United Reformed Church, Hallgate, at 7.30 pm.

Wednesday Social Club

Wednesday 27th June - Dave Roberts - Humber Rescue, in the Darby and Joan Hall, at 2.00 pm.

Skidby Open Gardens

Saturday 30th June - Many village gardens open, refreshments available in the village hall, homemade cakes and produce for sale. Bookstall including the famous Skidby recipe book. 12 noon to 5.00 pm. Entry to gardens by programme - price £3.50 per person; £6.00 per couple, and £10.00 per family. Tickets available from the car park and the green. Ample free parking well signposted. Proceeds to St. Michael's Church, which will be open for all to enjoy.

Little Weighton School Summer Fair

Saturday 30th June - From 11.00 am onwards. Lots of stalls and fun games, BBQ, Refreshments, Cake Stall, Tombola, to name but a few!! Everyone welcome. Fun for all the family.

There are no Cooking pages this month, instead we have incorporated two pages of the *Cottingham Review's* Coronation Souvenir edition of the Queen's Coronation in 1953 for you. We hope you enjoy this trip down memory lane.



Mark Toalster wins himself a 72 pint keg of real ale

Mark Toalster a regular customer at The Railway Inn, Thwaite Street, Cottingham, has won himself a 72 pint keg of Real Ale during the Beer Festival which was held recently.

There were over 285 entries placed in the draw to select the best Real Ale served during the festival, and he is currently enjoying his success.

2012

ChrisLee
CARPETS AND FLOORING

**Axminster Carpets
Devonia Plains**
50oz quality at 40oz prices!

37 Chanterlands Avenue
494313
www.chrisleecarpets.com

ALTERFRAME LTD.

146 Hallgate, Cottingham

Tel: 876473



Clothing alterations and repairs
Curtain alterations and haberdashery
For all your Horse Rug repairs

**LOOKING FORWARD
TO SEEING YOU ON
COTTINGHAM DAY JULY 7th**

THE RAILWAY
11 Thwaite Street, Cottingham, Hull, HU16 4JY • Tel: 01482 622980

Functions at The Railway
We have a superb function room with **FREE HIRE** available for private parties and celebrations - whatever the occasion.

- Christenings
- Birthday Parties*
- Engagement Parties
- Anniversary Parties
- Wedding Receptions
- Divorce Parties
- Leaving Do's

We can offer:

- Private bar and facilities
- Capacity of up to 100 people
- Catering available - buffets from £3.00 per head
- Own catering available**
- DJ can be arranged or background music from your own playlist
- Entertainment system available - disco, karaoke, horse racing

Wakes at The Railway
We have a superb function room available for wakes. Our function room offers:

- Private Bar and entrance • Capacity of up to 100 people
- Catering available • Tea and Coffee available
- Background music available

* We will accept 18th and 21st Birthday parties subject to certain conditions.
** Outside caterers are allowed. A booking deposit is required to secure all bookings.

PLEASE CALL US ON:
01482 622980
FOR MORE DETAILS.

VISIT US ONLINE
www.railwaycottingham.co.uk to contact us via email, follow us on Twitter or join us on Facebook

f t M



Annual General Meeting

For your information I give below information on the make-up of the various Committees and Working Groups on the Parish Council and which Councillors represent the Council on other groups. All Councillors are members of the Finance & Asset Management Committee and the Planning Committee.

Chairman:	Cllr Don Hardwick
Deputy Chairman:	Cllr Ann Abel
Allotments Committee:	Cllrs Abel, Cook, Hardwick, Knight and Minors
Personnel Committee:	Cllrs Abel, Casson and Cooper
Grievance Committee:	Cllrs Jump, Knight and McLaren
Drainage Working Party:	Cllrs Casson, Hardwick, Jump, Knight and Minors
CCTV Working Group:	Cllrs Abel, Cooper and Wright
Cottingham Day Committee:	Cllrs Abel and Wright
Snow & Ice/Emergency	
Plan Working Party:	Cllrs Abel, Casson, Cooper, Knight, McLaren, Minors and Wright
Council Against Car Parking	Cllrs: Cook, Hardwick, Jump, Kind, Minors and Wright
Charges Group:	
Cottingham Wild Space Gp:	Cllrs Cook and Wright
KGV Friends Group:	Cllr Cooper
Cottingham KGV	Cllr McLaren
Community Trust:	
YCCRP:	Cllr Knight
ERNLLCA representatives:	Cllr Knight and Wright
Haltemprice Flood Action Group	Cllr Knight
Humber Estuary Management Partnership	Cllr Jump
Darby & Joan Building Trust	Cllrs Cook and Minors
ABCD	Cllr Minors

Annual Accounts and Annual Return

The Annual Accounts and Annual Return for the financial year to 31 March 2012 were approved and signed by the Chairman on behalf of the Parish Council.

Cottingham Day 2012

Make sure you have Saturday 7 July in your diary as once again the village will be full of exciting activities for all the family.

The Cottingham Day Committee have arranged for bunting to be erected through the centre of the village. The bunting will be in place for the Queen's Diamond Jubilee, Cottingham Day, the Olympics right through until October when the Christmas Lights will go up in its place. Thanks to Miller Homes who have sponsored the bunting and the Christmas Lights Organisation who are arranging for it to be put up.

8 June 2012 - www.cottinghamtimes.co.uk

On the Day itself, the parade will leave the Hallgate School King Street entrance at 12 noon – led by 'THE QUEEN' in a horse drawn carriage – yes that's right – Her Majesty (or at least her number one lookalike) will be officially opening Cottingham Day. As our tribute to the Queen's Diamond Jubilee our event takes on a distinct 1950s feel. On the stage we will have a jive band performing and see if you can't spot Elvis!

Whether you prefer two wheels or four wheels – we aim to cater for all tastes! Once again, displayed on Hallgate, we have one of the largest displays of Classic, Vintage, American and Street cars ever seen in Cottingham. Don't miss the Motor bike display in the car park of the Memorial Club.

To keep the kids amused Grandads Park will be full of fun with rides, shows and entertainment and just a note for all you dog lovers out there, the Dog Show will be starting at midday as usual.

The Civic Hall will be full of charity stalls, spilling over into the Darby & Joan Hall as well. The Market Green will be a hive of activity with a full programme of entertainment on the stage as usual with plenty of seats to give your feet a rest inbetween enjoying the activities for all.

For your safety we have arranged for King Street (between its junctions with Hallgate and South Street) to be closed for the actual event and temporary bus stops will be placed on South Street and on Hallgate near St Marys church.

Diamond Jubilee Celebrations – Monday 4 June

As one of the 2012 official sites the KGV Trust have a full programme of activities starting at 2.30pm right the way through until 10.30pm and the lighting of the official Diamond Jubilee beacon. Lots to see and do including a traditional street party style event for the children and a themed afternoon of activities looking back at Cottingham since 1953. For any further information please contact the staff at The Pavilion or call 01482 840290.

Graffiti and Criminal Damage

If you see anyone defacing property or causing damage please report it to Humberside Police either by telephoning 0845 60 60 222 or by e-mail (with a photograph if possible) to safe.communities@eastriding.gov.uk. You can also use the form at 'contact us' on www.humberside.police.uk. Many thanks to the Neighbourhood Action Team who during their recent clean up day cleaned off a lot of the graffiti.

Contact Details

Should you wish to speak to a Parish Councillor, contact details are displayed in the noticeboards around the village. Alternatively, you can ring the Parish Council office on 01482 847623.

Keep up to date with what is happening around the village by visiting www.cottinghamparishcouncil.org.uk

Support the advertisers who appear within the Cottingham Times



Swanland Festival from Thursday 5th July to Sunday 15th July

Almost thirty events will be taking place in Swanland from Thursday 5th to Sunday 15th July, with something to suit every age and taste.

For the young - a Teddy Bears' Picnic; for the young at heart - a Festival Ball; for music lovers - Peter Bingham & Delia Fletcher; a Big Band; guitarist Gordon Giltrap; a Piper; for sports enthusiasts - a "Question of Sport Quiz; a Gala with Olympic feel; for theatre goers - an evening with John Godber and Jane Thornton; a Murder Mystery; for gardeners - Open Gardens; Flowers in the Churches; for the artistically minded - two Arts Festivals; Stitchers, Calligraphy; Quilling; plus Wine Tasting; Cream Teas; a History Exhibition; Fairtrade Sales; Model Boats on the Pond; a farm walk; finishing with an outdoor Final Service by the pond.

Everyone is welcome so please look out for posters, 'phone Jan on 634583 or Yvonne on 634863 or check us out on line at www.swanland.info/Festival-2012.html.



Samsung 40" Full HD 1080P Freeview HD 'SMART' LED TV

Discover a TV that offers vivid viewing and a diverse range of entertainment. The Samsung 40 inch ES550 LED TV lets you access online Smart Hub content and services, and you can even make big-screen Skype video calls.

- Full Web Browser, APPs and Skype Ready
- 1920 x 1080 Resolution
- 3 x HDMI
- 2 x Smart
- 2 x USB
- Energy Rating A
- 2 x 10W Speakers
- SRS TheatreSound HD

Model Number : UE40ES5500KXXU

AS SEEN ON TV

WAS £679.99
NOW ONLY £549.99
SAVE £130.00

Available From Your Local Euronics Agent:

BONUS

ELECTRICAL SUPERSTORE

Grange Park Lane (behind Waitrose Supermarket), Willerby
Opening hours: Monday to Saturday 9.00am till 5.30pm and Sunday 10.00am till 4.00pm
Tel: 01482 659888
www.bonuselectrical.co.uk

FREE Local Delivery
FREE Removal of old Appliance

Internet Doomsday on July 9th?

Internet Doomsday on July 9th ? You may have read or heard news stories forecasting that hundreds of thousands of computers could lose their internet connection on that date, so what's it all about? Well back in 2007 a new malware infection was launched on an unsuspecting world that made a change to millions of unprotected computers, re-directing them to rogue servers in Estonia. Users of these computers (20,000 in the UK alone) would be unaware of this happening, and although the crime ring that set this up has been cracked, the FBI had to put in a temporary set up so that all those effected computers wouldn't lose their internet access. But this operation was so expensive the US courts rules that any infected machines would have to be cleaned by July 9th, as the temporary servers were going to be switched off. So how do you know if you've been infected? All you have to do is go online (before that date!) and type this in the address bar: <http://www.dns-ok.us/> If it comes up with a green background your computer should be ok, red and it's not. Follow the instructions on the page. **Contact us for details of anti-malware protection from only £20.**

It is probably worth explaining that the way this came about is all to do with how you get web pages in the first place. It is one of the wonders of modern technology that you just go online, type an address and your computer will know where to go to. The way it does that is by a process called DNS (Domain Name System). Every computer and website in the world has a unique number called an IP address, just like a phone number. So when you type www.bbc.co.uk your computer check the DNS (like a giant database) and looks up the IP address of the Beeb website. It then sends that number and up comes the site, all in a nano-second (or a bit longer for those with a slow internet connection!). If someone or something fiddles with your DNS settings it can then translate any address you type in and send you off to some fraudulent site. This is why you should never click on links in emails purporting to be from a bank, asking you to update your security details. The address it says in the email probably won't be the one you will be taken to. You probably never did have an account with Wells Fargo Bank anyway.

If you'd like to see how an email travels along its journey, and reaches its destination, have a look at: <http://www.google.com/green/storyofsend> It has to be said this is a good advert for Google

and its own Gmail service, but a straightforward guide anyway.

Facebook recently floated on the Nasdaq stock exchange valued at \$104bn based on a share price of \$38. Not a bad achievement for a company that has only been trading for 8 years, and was started by a 20 year old student in a Harvard University dorm! Facebook reportedly now has a staggering 900 million users worldwide. It could be said that it revolutionized the whole 'social networking' space; its predecessors being sites like Friends Reunited which were more concerned with finding people you had lost contact with. Facebook is all about what is happening right here, right now. I saw an amusing car sticker recently: *'Don't tell me, I've already seen it on Facebook'*

Why do smartphones and other pieces of high tech freeze and crash so much? This was the subject of an interesting piece on the BBC Click website. The first response from a tech expert was that 'they get confused'. Luckily life support machines and aeroplanes don't suffer the same software problems, but then they won't be running email, *Angry Birds*, Facebook status updates, sat nav, texting and talking all at the same time inside a case not much bigger than a matchbox in someone's sweaty hand! It's all about so many pieces of software running and being so dependent on each other, if one fails, they all go into wait mode. In that case, one of the golden rules beloved of most IT support personnel is: turn it off and turn it on again.

I was invited to attend the ESET partner conference recently, and I am delighted to pass on reassurance to all users of their excellent anti virus/security products that they haven't missed a single 'in the wild' virus in 14 years. Shameless name-dropping of valued customers included the NHS, Jaguar, Land Rover, and even Microsoft's own test labs. Big corporations and Government departments have seen great benefits from using ESET; and from a home user viewpoint this is one product that won't slow down your computer, it just gets on with the job. For new sales and renewals, you know who to call!

Richard Mills
RDM Computers
Cottingham
T: 01482 875666
e: info@rdmcomputers.co.uk
www.rdmcomputers.co.uk

technology simplified

Computer repairs & upgrades

Home visits & helpful service

Broadband set up &
wireless networks

Anti-virus, Malware &
Security solutions

Set up of your own
purchased equipment

Honest & Impartial advice

- Enjoy your computer & stay safe
- Service plus security check for only £45
- Add memory at same time from only £25
- Assured service from your local specialist



web: www.rdmcomputers.co.uk
email: sales@rdmcomputers.co.uk
phone: 01482 875666
07850 105424



Hallgate School Summer Fair on Saturday July 7th

Are you planning to come to Cottingham Day on **SATURDAY 7TH JULY**? If so, why not pop in to **HALLGATE PRIMARY SCHOOL** & join in our Summer Fair at the same time!

We have lots of family friendly attractions including: Bouncy Castle - Face Painting & Tattoos – Tombola – Toys, Games & Book Stall - Cake & Plant Stalls - Cottingham Rangers Penalty Shoot-Out and Traditional Children's Games.

Performances include Gymnastics displays from Hull Gymnastics Academy and a Showcase by Fierce Dance and Performing Arts.

Step back in time for our Vintage Tea Dance with ballroom demonstrations by The Space Dance Studio.

A range of refreshments will be available including Cream Teas & Cakes, Bar-B-Que, Ice Cream Van, & Pimms Tent.

Hallgate Primary School is located in the heart of Cottingham with entrances on Hallgate (near St. Mary's church) and King Street (next to the clinic). We hope you can join us between 12 noon and 3pm for a fun-filled day.

EVERYONE WELCOME!!

Protect your family's inheritance from care costs, tax, divorce and debt

FREE no obligation home visits

AW² CO
The Asset and Wealth Protection Company

Wills from just £29

For a free information leaflet or consultation call us now on **01482 657333** or visit www.asset-wealth.co.uk
Local representatives for the long established and registered Countrywide Tax and Trust Corporation

Bridget FREER 07541 009321
bridget@bridgetfreer.co.uk

clinical hypnotherapist

**Lose weight with a
Virtual Gastric Band**

Smoking: Stress: Phobias

www.bridgetfreer.co.uk

**Total Peace of Mind...
...with the Classical Gas Care Plan**

classical gas

For fast boiler repair, whatever the weather, **choose a local company** with real people answering the phone (no call centres!) Thousands of local households trust us to make sure they have heating and hot water 7 days a week, 365 days a year.

We keep our promise – to attend emergencies within 24 hours whatever the weather.

One low cost monthly payment* gives you:

- Priority call out for emergencies
- Choice of cover – boiler only or full system cover available
- Unlimited call outs – repair of your boiler and central heating system including all parts and labour*
- Includes annual boiler service and safety inspection

*Subject to contract chosen, Terms & Conditions Apply

Call 01482 875897 to learn more

From only £2.08 per week

safe 375

Classical Gas Ltd
60 New Village Road
Cottingham HU16 4NE
www.classicalgas.co.uk

Tax Free Income for 25 years with Solar Panels

Generate your own green energy and reduce your carbon footprint.

Protection from rising energy costs.

Tax free 7.5% return on investment.

Significantly reduce your utility bills.

Call Paul on 01482 845 840 for a FREE quote + friendly local advice.

REA **HCS** **HumberSolar**

www.HumberSolar.com

EVERFLOW
Plumbing Services
 GENUINE 24-HOUR CALL OUT
 REGISTERED UNVENTED INSTALLER & REPAIRS
 BATHROOM SUITES, ETC.
 CENTRAL HEATING SYSTEMS POWERFLUSHED
 AT VERY COMPETITIVE PRICES
 NO JOB TOO SMALL :: ALL AREAS COVERED
 Call Phil **01482 841304**
 Mobile: **07970 359706** Cottingham

Time Served & Qualified Craftsman
Traditional & Contemporary Carpentry & Joinery
 Restoration - Buildings - Home - Furniture
 Contemporary - Design & Build - Kitchen - Bathroom -
 Roofs - Summer Houses - Pergolas - Windows - Flooring
 Mr G. Abey
 01482-841198 / 07949501496
 25 years experience. References upon request. Fully Insured.
 graham@northhouses.karoo.co.uk

PASCOS
 CAFE RESTAURANT
*Celebrating our
 third year in Cottingham
 and saying a big "Thank You"
 to you our customers*
 Lunchtime and
 Evening Menus Available
 Specials Board Changing Daily
 Good value for money at all times
 See you all on Cottingham Day
 Saturday 7th July
 For Reservations (01482) 848419
 Unit 5, Kings Parade, King Street, Cottingham

Wordsearch - Thirsty Work

Can you find the hidden names. They may be horizontal, vertical or diagonal, forwards or backwards.

R	E	E	B	R	E	G	N	I	G	Y	E	C	I	U	J	D	B	E
R	U	E	U	Q	I	L	A	L	A	S	R	A	M	R	E	T	A	W
K	L	I	M	V	E	N	I	W	A	S	R	A	E	R	E	E	B	V
E	G	A	R	E	V	E	B	O	N	L	C	P	P	H	C	N	U	P
P	C	O	R	D	I	A	L	A	N	W	C	I	E	O	D	E	V	E
E	S	I	H	E	K	T	E	P	F	I	L	O	F	R	X	D	S	N
L	A	C	N	D	T	R	E	I	A	S	C	F	H	P	N	H	N	G
U	N	T	O	I	E	S	T	Q	N	C	E	C	R	O	E	O	R	A
J	G	V	O	G	T	I	I	E	U	E	T	E	U	R	L	E	D	P
T	R	D	A	D	R	R	R	N	C	I	S	H	R	P	T	V	A	M
N	I	L	E	E	D	C	A	I	A	S	L	Y	G	T	P	A	V	A
I	A	L	P	W	J	Y	G	M	O	O	V	A	I	I	R	A	S	H
M	A	A	K	C	A	J	E	L	P	P	A	B	B	B	N	S	C	C
C	O	C	C	O	C	K	T	A	I	L	T	C	O	R	E	C	H	S
I	I	U	L	T	G	O	E	G	G	E	B	R	U	A	L	O	N	H
N	V	D	Z	A	U	R	C	D	I	D	S	E	R	N	I	T	A	A
O	R	V	E	O	R	O	A	O	T	N	O	A	B	D	X	C	P	N
T	C	T	T	R	A	E	T	E	A	M	D	M	O	Y	I	H	P	D
S	T	I	R	I	P	S	T	S	V	M	A	I	N	D	R	N	S	Y

Find the words in the letters above:

Alcohol, Ale, Aperitif, Applejack, Beer, Beverage, Bitter, Bourbon, Brandy, Cappuccino, Champagne, Cider, Claret, Cocktail, Cocoa, Coffee, Cordial, Cream, Elixir, Espresso, Gin, Ginger Beer, Juice, Lager, Liqueur, Marsala, Martini, Milk, Mint Julep, Nightcap, Ouzo, Pernod, Pilsner, Punch, Retsina, Sangria, Schnapps, Scotch, Shandy, Sherry, Soda, Spirits, Stout, Tea, Tequila, Toddy, Tonic, Vodka, Water, Wine

Wordsearch courtesy of www.puzzlechoice.com

Sudoku No. 66 -

This is an easy challenge this month

	6	3				1		2
	2	4	1		3	7		9
	7		2				4	
	8	2				5		
4					8			
	1	9					3	6
5		8			2	6		7
	9		5		4	2		
		1	6		9			

MARIONOWENTRAVEL

Can you believe we are now in May? I had just decided it was time to sort out our summer uniform in the office but I'm not really sure at this point when we will shed our winter jumpers! Surely by this time next month, things will be looking up? I have to say that this May the weather on our Isle of Wight tour was incomparable to last year but with a good hotel, food and service, we all had a lovely time. Next year we will be repeating this tour departing on 19th May 2013 for five nights. This lovely island; so close, yet you would think in another country.....come along and experience for yourself.

Cruising from Hull: FREE parking offer was due to expire as you read, however if you quote COTMOT2 when booking, it will be honoured when booked before 30 June 2012.

Myself and Lynne visited the Ocean Countess this week. The food and entertainment on board was excellent and the ship was in very good shape. For anyone who travelled on the first two sailings from Hull this year you will be pleased to know that the ship has gone back to its previous berth in King George Dock - hopefully for good!

We expect to release a selection of exclusive river cruises departing from Hull via P&O North Sea Ferries soon; if you're interested please call and register today!

Egypt and Nile cruising: For a number of years cruising on the Nile has only been from Luxor to Aswan; well, later this year you will be able to take a cruise from Cairo to Aswan for 14 nights - price guide £2190 per person/twin share. This is a fascinating destination; talk to Kayleigh for more information, she just visited this May and loved her experience including a balloon ride over the Valley of the Kings in Luxor.

Voyages to Antiquity offer the most fabulous cultural / history rich cruises to the Far East in the winter and the Mediterranean in the summer. All excursions are included and the food is superb, accompanied by free flowing wine with dinner! In 2013 there is a fabulous Black Sea cruise itinerary; if this is an area on your "to do list", it's well worth looking at.

India: We now have two very special, small group escorted departures; with the first to "Gods Own Country" - Kerala. This tour departs on 7th November 2013 for 9 nights and includes excellent accommodation along with a superb itinerary that will not disappoint.

We have already taken two groups on the fabulous Taj and Tigers tour. A new experience awaits around every corner; this is an unbelievable adventure from start to finish and will be departing again in March 2014.

If you are a keen gardener or enjoy your flowers, we are offering Gardeners World (just for a day) coupled with the Summer Good Food Show - last year, everyone had a great time. We had guests purchase patio sets and cookers, although they opted to have these delivered, we still had a boot full of goodies!

Floriade: only every 10 years, this is a huge expo. We have included a two day entrance ticket for our departure and have just 5 places left.

Chrysanthema in Lahr Germany: an array of colourful displays around the town, coupled with time in the Black Forest this Autumn; representing excellent value.

If you travel with a group or society, why not ask for a quote? If you are unable to fill a full coach yourself we can offer a private small group tour (maximum 15) or fill a tour with like minded travellers to join you.

Next year we have a weekend with many single rooms and no supplement! 3rd May for 3 nights, half board. The weekend includes the Heights of Abraham, West Midlands Safari Park, Warwick and Chatsworth House & Gardens all for just £235.

If you haven't made plans for this years holiday, it's not too late. If you are totally flexible you could pick up a bargain whether you are looking for a holiday abroad or in the UK via land, sea or air - just pick up the phone. Before you contact us, work out your possible dates, a rough budget and we can do the rest for you. Please don't be like the lady who called today having made a booking (not sure where) and had no tickets for her departure! We can only help you when you have booked with us.

Don't forget to check your passport, E111 and if visiting the USA, your ESTA. Please don't leave home without taking out travel insurance; it's not always you that suffers in the event of a mishap; it could well be your family at home.

We look forward to sending you on your travels or even joining me on one of our own tours. We have destinations and prices to suit everyone and book all tour operators including Great Rail, Riviera Travel etc.

Myself, Lynne, Kayleigh & Sarah look forward to being of service.....

Please call for more information and to book your next escape.....

.....wherever it may be in the world!

Marion



OCEAN CRUISING from HULL 2013 M/V Ocean Countess

Book before 30 June - FREE PARKING

02 June : Liverpool - Iceland - Hull : 10 nights
12 June : Summertime Fjordland : 6 nights
18 June : Majestic Fjordland : 7 nights
25 June : Baltic Capitals & Russia : 12 nights
07 July : Fjordland Splendour : 8 nights
15 July : Mini Cruise (from £79) : 1 night
15 July : North Cape/Midnight Sun: 12 nights
Call today for full itineraries & prices.

Fred.Olsen Cruise Lines

Winter sunshine cruise 13 January 2013

Join Marion on this 11 night sailing from Tenerife to the Cape Verde Isles and Africa : Prices from £1099.

We are one of Fred Olsen's Key agents in the country we have access to all of their offers plus, on many cruises are able to offer travel from your door. This makes the start and finish to your cruise stress free and part of your holiday.

Marion's Own Tours

16 Jun. BBC Gardeners World day out £49
20 Jul. Thoresby Hall 4 day weekend £259
24 Jul. Settle to Carlisle rail day out £55
02 Aug. 5 days Isle of Man small group £515
30 Aug. Lille - via Dover Calais 5 days £384
Enjoy 62 miles of market stalls in a carnival atmosphere.
05 Sept. Legally Blonde the Musical (York) £55
09 Sept. World War 1 - 6 days £389
16 Sept. Floriade 4 days inc. 2 day ticket £295
12 Oct. Blackpool Lights weekend HB £169
19 Oct. Ypres, Antwerp & Beer Festival £169
27 Oct. Orient Express full day Edinburgh £345
29 Oct. Oban 5 days half board £229
04 Nov. Chrysanthema 6 days Germany £325
2 nights NSF, 3 nights half board in the Black Forest.
16 Nov. Thursford 3 days half board, top tickets £215
08 Dec. Thursford 2 days half board, top tickets £145
25 Nov. Manchester at Christmas 2 days HB £79
28 Nov. Chester & Sound of Music 2 days HB £85
30 Nov. Cologne Markets weekend centre hotel £169
15 Apr. Torquay 5 days quality all inclusive £295
24 Apr. Isle of Man 6 days half board £425
03 May Weekend Away singles no supp 4 days £235
19 May Isle of Wight 6 days quality half board £395
23 Jun. Emerald Island Explorer 12 days HB £995
04 Oct. St Albans & Windsor 3 days half board £129

Local pick up points only these are our very own tours.
Prices, per person based on 2 sharing unless other wise stated.
Solo travellers welcome on all tours supplements are kept to a minimum, 3rd person sharing reductions available, please ask.
All prices & tours subject to availability at the time of booking.



We look forward to your enquiry.

For Further information & to make your booking tel: 01482 212525
or visit in person : 23 Portland Street, HULL, HU2 8JX www.marionowentravel.com

Office hours: Monday - Friday 9am-5pm : Saturdays by appointment 9.30am to 1pm

AMPTech
Electrical Ltd

01482 376574
07964 927001

email: neil@amptechelectrical.co.uk

www.amptechelectrical.co.uk

We offer FREE surveys and estimates, we aim to beat any like-for-like written quotations.
Specialists in all aspects of electrical testing and domestic & commercial installations.
24 Hour Emergency call-out service

Slimming
WORLD

Weekly Classes held at:
Darby & Joan Hall, Finkle Street,
Cottingham
Monday 5.30 pm and 7.30 pm
and all Bank Holidays

Also at: Sutton Park, Hull
Tuesday at 9.45 am

For Membership details Ring Theresa on 823032

AERIALS
COTTINGHAM

CALL TODAY FOR A
FREE QUOTE ON:

01482 946016

Call Gary on: 07850636902

FAMILY RUN BUSINESS

ADI
COMMUNICATIONS LTD

- * 10% OAP discount
- * Digital Aerials
- * Phone Lines
- * CCTV Installations

N.O.C.

PROPERTY SERVICES LTD
ROOFING SPECIALISTS

30 YEARS EXP, CHAS ACCREDITED, FULLY INSURED
ALL ASPECTS OF ROOFING AND GUTTERING
SPECIAL DEALS ON FULL RE-ROOFS

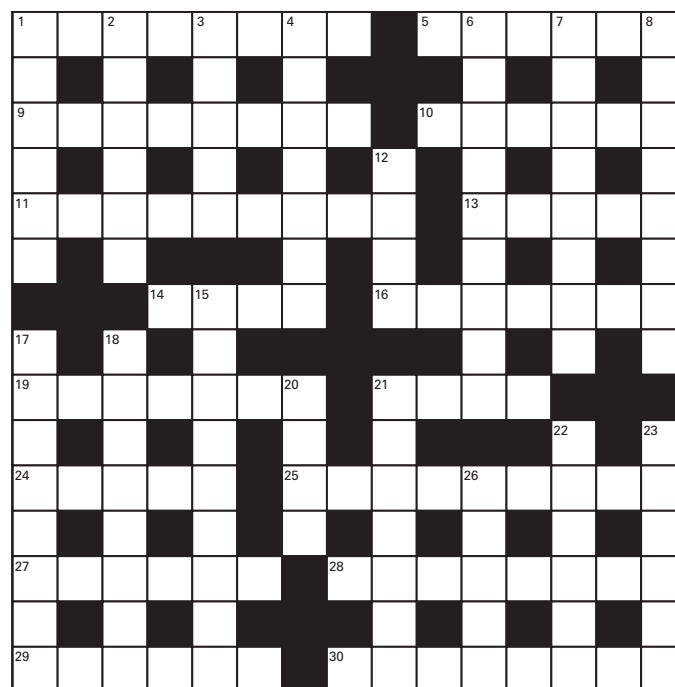
FOR FREE ESTIMATES AND ADVICE
CALL NICK O'CONNOR ON
01482 447 357 OR MOBILE 07947 556 719
92 HULL ROAD, COTTINGHAM HU16 4PU

C. R. Noble

JOINERY • GLAZING
SECURITY SHUTTERS
GARAGE & INDUSTRIAL DOORS

24 Hour Emergency Call Out Service
Telephone 01482 845172
Mobile 07768 837789
Fax 01482 845876
76 Mill Beck Lane, Northgate Cottingham HU16 4EU

Crossword - Solution on page 46



Across

- Chatted (8)
- Complain (6)
- Eats plants and animals (8)
- City in Turkey (6)
- Heart chamber (9)
- Willow (5)
- Sword (4)
- Barbarians (7)
- Garage (7)
- Dinghy (4)
- Proof of innocence (5)
- Not here (9)
- In the same place (6)
- Cathedral (8)
- Nullify (6)
- Within (8)

Down

- Rut (6)
- A speech sound (6)
- A trademarked nickel-iron alloy (5)
- Otalgia (7)
- City in British Columbia (9)
- Diagrammed outlines (8)
- Head restraint (8)
- Snake-like fishes (4)
- Conspicuous (9)
- Event (8)
- Extolling (8)
- Placed on a tee (4)
- Scorn (7)
- Resists (6)
- Request forcefully (6)
- Gyrate (5)

Crossword courtesy of www.crosswordpalace.com

Support the advertisers who appear within the Cottingham Times

Plans for Supermarket on Station Road, Cottingham rejected by Parish Council Planning Committee

Plans for the proposed Supermarket on Station Road, Cottingham, were rejected by the Planning Committee of the Cottingham Parish Council at a meeting held on Tuesday 22nd May.

At a very well attended evening meeting at the Methodist Church on Hallgate, Cottingham, where the meeting was held in the upstairs church due to the high attendance, residents expressed their concerns to the committee over the proposed development.

After due deliberation the Planning Committee rejected the plans for the proposed supermarket.

The 39th Annual Skidby Art Exhibition & Sale – Saturday 9th and Sunday 10th June

Skidby Village Hall is organising the popular Annual Art Exhibition and Sale over the weekend of 9th and 10th June. The Exhibition, which features a wide variety of work by local artists, is open to the public each day between 10am and 5pm.

Admission is £1 per person with accompanied Primary School children admitted free. Quality home-made refreshments will be available throughout the event. Artists who wish to exhibit their work should contact the Secretary, Kelvin Young (01482 843446), or visit our website at www.skidby-villagehall.btik.com to download a Registration Form with Conditions of Entry.

We look forward to welcoming you to a traditional village Art Exhibition – we feel sure you will enjoy the experience!

Love Nails

lovenailscottingham@gmail.com

**SPRAY TAN • WAXING • EYELASHES
GELLISH • NAILS • HAIR • MAKE-UP**

20% Student Discount

OPI Products for sale

98a King Street, Cottingham HU16 5QE

Telephone 843880



KRISTOFF'S

OF
HALLGATE, COTTINGHAM

3 COURSE MEAL

£14.95

Thursday, Friday & Saturday Night

NEW MENU OUT NOW!

tel:876886

FOR THE PERFECT NIGHT OUT

Classic English Cuisine



Oki

Original Kitchen Ideas

www.okikitchens.co.uk

01482 650755




Over 70 different kitchen ranges to choose from!

- **All types of worktops** Laminate, solid woods, quartz, granite
- **All makes of appliances** From budget to designer . . . the choice is yours
- **Expert fitting service covering all trades available** Electrical, gas, plumbing, tiling, joinery, building, decorating
- **Free design and planning service** With no obligation on the latest CAD system to give you a realistic insight to envisage the end result

Just compare our prices

The Corner of Carr Lane, The Square, Willerby, Hull HU10 6BN

CORONATION souvenir ISSUE

COTTINGHAM REVIEW

Number 13 - SATURDAY, 6th JUNE, 1953 - Monthly - Price 2d.

RAIN FAILS TO DAMP
CORONATION SPIRIT

BY COTTINGHAM REVIEW REPORTERS

Although the weather was very drab and miserable, there were no dampened spirits in the halls and houses of Cotingham on Coronation Day.

Many Coronation Parties scheduled to be held in streets, gardens and fields were moved under shelter. Fortunately no organised parties had to be cancelled, although many sports and outside activities were postponed.

A tour of the Cotingham celebrations showed that the weather had in no way spoiled the fun; for at all the parties, the children revelled in the cakes and buns and bottles of pop, which left them with an expression of satisfaction which justifiably rewarded the organisers.

The "Keywick Garden's Coronation Effort" as it was billed, was a great success, and although the Sports had to be postponed, the Children's Fancy Dress Parade was held in Blundell's Pavilion, Ingelmire Lane, along with a tea and party games.

In Cotingham's Parkway the Children's Party due to be held in the street, was moved into a house. Each child received a Coronation mug and several saving stamps were given as prizes for party games which were held in the evening.

The venue for the Cornwall Street and New Village Road Children's Party was the Cadet Hut on Station Walk. Their outside activities had also to be postponed.

The Devon Street and Exeter Street Children's Party was moved to the Hallgate Rooms. The Children were given a tea and in the evening party games were held.

In spite of the weather the fireworks display was held at Dunsell after the children had been given a tea, at which they received Coronation souvenirs.

As part of their Coronation celebrations the Dunsell Institute gave an impromptu concert to a crowded audience on Coronation Eve.

At Skidby, the Children's Party had to be held in the Village Hall, when 180 children were presented with Coronation Mugs. Children travelled from Eppleworth and Raywell to attend the Party.

Marriage

Miss Janet Stephenson, only daughter of Mr. and Mrs. K. Stephenson, was married to Mr. G. Hildyard, at St. John's Church, Newland, last month. They were married by The Rev. Mark Green.

The couple spent their honeymoon in London.



Top—Mr. Grantham's cart which won first prize in the Skidby decorated vehicle procession on Coronation Day—for story see inside.

Below—Everyone enjoyed the Dunsell Coronation Party as can be seen by the boy pictured below.



Her Majesty QUEEN ELIZABETH II.

Coronation Day
Duty for Nurses

Mrs. French and her daughter of the Cotingham St. John Ambulance Brigade, travelled by train to London on Coronation Eve. They were to be on duty in front of Buckingham Palace on Coronation Day.

At 3-30 a.m. on Tuesday, they left their billets to take up their positions. They were on two hour shifts, their first shift was from 5 a.m.—7 a.m.

Although they were soaked to the skin and frozen stiff, Mrs. French and her daughter told me they enjoyed every moment of it.

The busiest time of the day was between 1 and 3 in the afternoon, most casualties being elderly people being treated for cold and exposure.

Although there were thousands of people packed round the Palace, there were very few casualties.

Two of the most exciting moments were when one of the horses shied down the Mall, and when the crowd broke through the police cordon after the Queen had come out on the balcony.

BUDGERIGAR
SOCIETY

At the inaugural meeting of Cotingham's new budgerigar society known as the "King William IV Social Budgerigar Society," the following officers were elected: President, Mr. J. Rice; Chairman, Mr. G. Stainon; Secretary and Treasurer, Mr. A. L. Rice.

Juvenile members still at school are admitted free. The society's main object is to help novices with their breeding and exhibition problems.

Meetings are to be held every month. Messrs. Dearing, Ward and Wollas, the well known Cotingham bird breeders will help the Club.

The Haltemprice Urban District Council last month decided that they should send no representatives to the conferences in the coming year.

All the children at the Cotingham Salvation Army Sunday School received Coronation spoons last Sunday.

The Cotingham Old Boy's A.F.C. (social section) will hold their Annual General Meeting next month.

**Get the
Wools
you want
at
MOATE'S**

Sock Wools
Baby Wools
Jumper Wools, Etc.
ALL AT
142 HALLGATE
Cotingham
THE LITTLE SHOP WITH
THE HOMELY ATMOSPHERE
Next Door to Barclay's Bank.

BEAL'S

PROPRIETOR: C. S. ROBINSON

We can offer you an exceptionally good service in the delivery of newspapers from Sunday to Saturday.

In the shop we have a Lending Library to suit all tastes. Periodicals and Magazines.

Letter Headings, Invoices, Vetting Cards, etc. printed to your requirements.

All leading brands of Cigarettes and Tobacco stocked.

NEWSAGENTS

133/135 HALLGATE - Telephone 47060

COTTINGHAM'S WALLACE ARNOLD TOUR AGENTS



Here is Paul's latest walk in his series of monthly rambles. This month his destination is Old Byland. The map is for a guide only, please use an Ordnance Survey Map or similar if possible when walking.

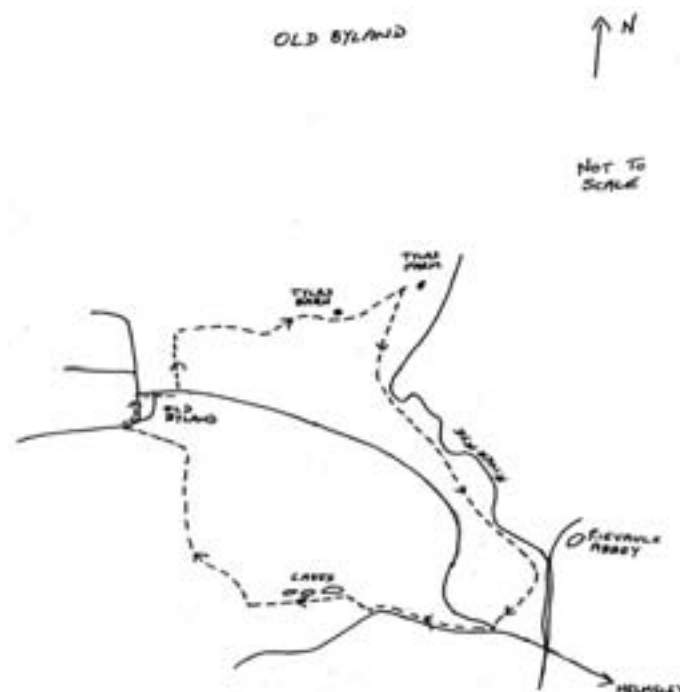
Map:- EXPLORER OL26

Start at GR.SE 550859 Wide street in Old Byland.

Distance 6.0 Miles.

From the village green in the heart of Old Byland, follow the road up through the village and round to the right then immediately after the last farm building on the left, take the path to the left over a ladder stile. Head straight across the field keeping close to the farm buildings and fence on your left, through a gate and carry on alongside the hedge until you reach the end of the field. Turn right here (signpost Tylas) and follow the well marked path over several fields alongside the hedge until you come to a stile that leads onto a track at the top of the deep ravine of Oxen Dale.

Turn left along the track and follow this clear track skirting the top of Oxen Dale, passing Tylas Barn on your left after about half a mile,



after which the track drops steeply down towards Tylas Farm. Just before you reach Tylas Farm turn right along the metalled lane heading down the dale and follow this for half a mile until the road crosses Oxen Dale beck. Immediately after this beck cross the stile to the left and follow the clear grassy path across meadow lands over walkboards along the banks of the River Rye and then over more meadow land to reach a clear track through a gate.

Turn right along this track then almost immediately turn left through another gate (Signpost Ashberry) and follow this very clear grassy track up into woodland with superb views of Rievaulx Abbey through the trees. Follow the path as it gradually curves round to the right and drops down to reach Ashberry Farm through a gate, after which walk right to join the road.

At the road turn left over the brick built bridge and then right along the road towards Thirsk and Scawton. Follow this quiet lane for about half a mile then take the track to the right at the small parking area (signposted Cleveland way) through a gate. Follow the track to the right up into the wooded confines of Nettle Dale passing a trio of small lakes. As the woods open out into a clearing turn off the track along the path marked Cleveland Way, over stepping stones and then through a small gate, after which cross the stile straight ahead - do not walk along the track to the left. Walk across the field and over a footbridge that leads into Callister Wood. Follow the clear path that heads up to the left through the woods to reach a gate in the stone wall at the top of the bank.

The path now heads straight on a cross open fields alongside a hedge on your right. After the second gate the path continues straight on over a farm track and heads through a small gate into woodland. Follow the clear path to the left through undergrowth and trees, gradually dropping down into a small valley and up the other side to reach the road. Turn right along the road back into Old Byland.



FOLLY LAKE CAFÉ

A magnificent lakeside cafe overlooking the historic Folly Lake and the beautiful surrounds of Risby Park Fishing Ponds.

EVERYONE IS WELCOME

- Open 9.00 am to 5.00 pm Tuesday to Sunday
- Serving Espresso coffee and teas, homemade cakes, salads, light lunches, sandwiches and all day breakfasts.

EAT IN OR TAKEAWAY

Take the turning for Walkington off the A164 into Beverley and follow the signs to Risby Fishing Lakes, or walk between Skidby and Walkington and look for the signs.

YORKSHIRE TEA and HOMEMADE SCORE

for two - £2.00

with this voucher

Dunflat Road, HU17 8SS

Enquiries, telephone 07860 255981



Free Legal Advice Clinics

Following the success of our Wills Clinics, held monthly at the Civic Hall in Cottingham, our Family Law Specialists will now be available to offer legal advice on Family issues.

When you are thinking of separating from your partner, or your relationship has already broken down, it can be an extremely difficult and painful time in your life. You will no doubt have concerns about what to do next and where to turn. There may well be issues relating to your children or finances to address. You may also be worried about how to resolve matters and how much it will cost to do so.

Options™ is a new scheme which has been launched by our nationally regarded family law team, where we offer a free half hour discussion with one of our lawyers, all of whom have many years' experience of working with couples and families in this highly sensitive area of law.

During your discussion, we will talk through the options available for resolving your particular issue. These might include discussions with your former partner through negotiation involving one of our lawyers, through mediation, collaborative law or perhaps the court process.

We can help you decide which route is best for you and your particular circumstances and then guide you through that process to ensure re-assurance for you, and a settled future, as swiftly as possible.

Contact Jayne Andrews on 01482 325242 now to book your FREE Options™ appointment at our Cottingham Legal Clinic.

Andrew Jackson
Solicitors

Do you need advice on

Wills? *Family Issues?*

Powers of Attorney? **Probate?**

We are holding Legal Clinics at
Cottingham Civic Hall from
12 noon - 5pm on;

Thursday 14 June 2012
Wednesday 18 July
Wednesday 15 August

FREE INITIAL CONSULTATION

For further details or to book an appointment,
please contact Jayne Andrews or Jo Pearman on
01482 325242

Essex House | Manor Street | Hull | HU1 1XH | www.andrewjackson.co.uk
Andrew Jackson Solicitors are regulated by the Solicitors Regulation Authority: Ref 51781



LazyLawn is the natural looking alternative to grass that stays soft and green all year round. No more mowing, watering or weeding - just a beautiful space that's yours to enjoy.

Call 0800 840 7155 or email eastriding@lazylawn.co.uk





NEVER AGAIN!

How many times have we promised ourselves this? Never to go back to the same restaurant after a disastrous meal, never to return to the same place for a holiday or never to have another pet. Never! After going through the extremely painful experience of watching our beloved companion take their last breath, how can we go through it all again? How can we put ourselves through all the pain that is, at the moment, so raw. For some, it may take years to come to terms with their loss and others less. There is no easy set time period to follow or easy solution. Everyone is different but what I can say you will know when the time, if at all, is right.

My love of dogs was introduced to me by my parents at the age of 5 years when we adopted a little waife and stray we called Scamp. A lovely little affectionate character who lived to the ripe old age of 13 years. After much deliberation and family discussion, mum and dad went on to adopt a gorgeous crossbreed puppy called Emma. It was strange having a puppy in the house again, learning all the training once again but it was also fun. By the time I was in my early twenties and had been married for a year, my husband and I bought Brandy. In those days (1980'S) sadly pet shop windows were a common place to see litters of both puppies and kittens so the temptation got the better of us during our Saturday morning shopping trip. From that day to her sad passing away at the age of 11, Brandy became one of my most treasured companions. She was always by my side, watching my 3 daughters grow up and eventually, sadly, being my 'confidant' as I went through my divorce and the devastating quick loss of my dad who adored Brandy as his own after losing Emma. Sadly, a month after losing dad, I had to make the devastating decision to let her go with dignity, I did say 'never again'. The pain was raw (and with only writing this, I realise it still is)...I was distraught. How could I ever think of owning another pet and having to open up all my feelings for them to only be torn away yet again? But I did.

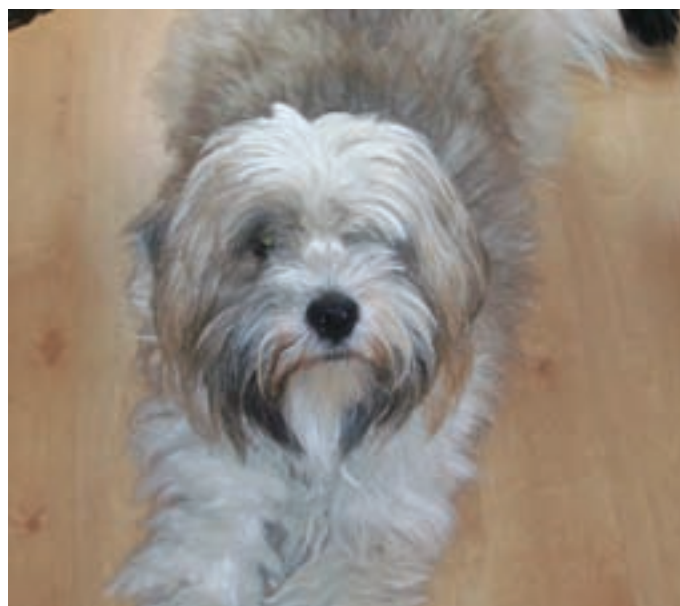
A LOCAL VETERINARY SERVICE BUT SO MUCH MORE!

Cottingham Surgery
14-18 New Village Road
Cottingham
HU16 4LT
Tel: 01482 843210

Kingston
VETERINARY GROUP

Other branches
Park Street
Tel: 01482 223688
Beverley Road Surgery
Tel: 01482 854422

www.kingstonvet.co.uk



Mum felt lost! After Emma, then dad, she needed another focus in life as well as her family and grandchildren so that is how we ended up at the RSPCA. Tess and mum bonded from day one and it was seeing this that I decided the time was right to look for another dog for myself. Along came Tammy, an 8 week old cross bearded puppy who the girls immediately fell in love with. She was the 'perfect' puppy, if you can have one described as that.... never chewed a thing in the house, seemed to be house trained within a couple of weeks and just followed the girls around like their shadow. So what was holding me back?

Don't get me wrong, I loved her but I felt there was something. It wasn't until I awoke one morning, when Tammy was about 6 months old, to find the kitchen floor literally covered in bloody diarrhoea. Panic struck in and the thought of losing another member of our little family within such a short space of time, was unbearable. Thankfully, after a very early visit to the vet followed by 48 hours of monitoring, Tammy was on the road to recovery and it was from this moment on I had finally found my bond with her. Whether I had put up an invisible barrier to stop my feelings getting hurt again after Brandy, I don't know but from that day I felt different. Once again, our little family unit felt complete. It was so amazing to watch such a unique friendship develop between my daughters and Tammy.

Something I will always treasure and as I watch them all now in their twenties with dogs of their own, the legacy lives on. As the years grew, so did Tammy. Not only in size but in our hearts. Wherever I went, she was there... from going to and from school to shopping, from visiting family and friends to eventually becoming a P.A.T (Pets As Therapy) dog. With a bit of time on my hands, I registered Tammy and after passing a short test with flying colours, we got our first 'job' of visiting a local residential home. It was wonderful to see how just 2 to 3 hours a week of our time, can bring so much pleasure. It was also sad to hear of how some of the residents had to give up their beloved pets to get into the home, so the sight of a four legged big bundle of fun bouncing into the room brought a smile to many faces. It was the seeing one of the elderly ladies raise her hand and a smile for the first time when she first met Tammy...something she had never done since she had started living there.... that made me feel our visits were worthwhile.

I am also proud to say Tammy won the regional finals of Companion dog of the year only to be pipped to 2nd place in the National finals by a Golden Retriever in Scotland. Sadly, I had to give up our visits when I started working full time for a local vets and yes, Tammy was by my side once again. She accompanied me everyday and was quite happy lying in her basket by my feet, only to get up to greet the 'odd' nervous client to show them that the vet is not as fearsome as he/she may look. She also came on my visits to schools when I gave talks on Pet Care (sadly with Health and Safety etc we are no longer able to take pets into schools). One of my proudest moments was when she gave her first blood donation (something we also do at KINGSTON and are constantly looking for donors) and delighted to say the receiver led a full road to recovery. The list is endless. She had so many loving qualities, so much love to give...my four legged 'soul mate'. Then the fateful day arrived. I had to make that dreaded decision. So letting her go with dignity, at the age of 16 years, Tammy died peacefully in my arms, at home and surrounded by all who loved her.... my daughters and mum. The old saying "Time is a Great Healer" is right. We never forget those who we have loved. The memories never go away but with time the 'raw' period begins to blend into the back ground and the happy times become more memorable. Like people, each pet is different. We don't love them anymore than the previous one, just maybe in a different way.

Never again? Teal!!! My gorgeous yet destructive black labrador....like I said, everyone is different.



Busy time for the Lions!

The last weeks have kept the Haltemprice Lions members very busy. They organised a very successful 'Burlesque Evening' at the Inglemire Club where an audience of 100 enjoyed a sparkling evening of dance and entertainment which resulted in the proceeds of £550 being donated to The Orchid Trust.

The trust supports all matters relating to male cancer. Following their success with that event a band concert was organised later in the month at St. Mary's Church in Cottingham when the East Riding of Yorkshire Band played a varied and enjoyable programme to an audience of nearly 200, as a result part of the proceeds will be donated to the church's Lighting Fund.

Members and their Friends then gave their time over two days to collect at the Tesco Supermarket, Hall Road, in aid of the Marie Curie Trust. The collecting boxes were filled by the local shoppers and resulted in a total of £850 being handed over to the Trust. Many thanks for all friends and residents who supported our initiatives which due to your efforts some very worthy local causes have benefitted.

The Lions' have a stall in Cottingham Market on Thursday 5th July, come and see us – you may pick up a bargain. If you are interested in joining the Lions as a member or being a 'Friend' please email dwhincup@dwhincup.karoo.co.uk or phone 01482 847367.

New Venture in the High Street

A la Mode

Designer labels, High Quality Ladies and Childrens Clothing plus Vintage Items and 'one offs'. We want your best frocks and accessories, so that you can clear out your wardrobes and make a profit. All clothing must be in very good condition and of high standard.

Come along and see us, we are at

177 Hallgate Cottingham

(within Curtain Creations)

Telephone Janet 841244 (shop) or Janet 841848



At Home TV and DIY Services

(Pete Hall, formerly of Spectrum (Cottingham))

- TV, DVD Recorder Set Up • Tuning/Tuition • Wall Mounting • Low Rates
- **FREE** Advice • **FREE** Quotes • Friendly/Reliable • Small DIY Jobs
- Furniture Assembled • Blinds, Poles Fitted • Shelves/Pictures
- All Work Guaranteed • Call Anytime • 25 Years Experience

SMALL JOBS? NO PROBS!

8 Kent Road, Cottingham, East Yorkshire

Tel: 01482 848477 or 07812 813804

★ **Please keep this safe** ★

Golden Charter Funeral Plans from H Kemp & Son Ltd

Making sure everything goes to plan



H Kemp & Son Ltd
259 Hallgate, Cottingham,
East Yorkshire HU16 4BG.

(01482) 844695

A funeral plan leaves nothing to chance and provides **peace of mind** for you and those you care about.

We recommend funeral plans from Golden Charter, the UK's largest provider of plans to independent funeral directors like us. With a Golden Charter funeral plan you'll benefit from:

- **Fixing the cost** of our services at today's prices
- **Reassurance** for your family – no uncertainty or difficult decisions
- **Complete flexibility** to choose the funeral you want

Taking out a funeral plan is one of the most thoughtful decisions you could make.

Golden Charter
Funeral Plans

The UK's largest independent funeral plan provider

www.yourfuneraldirectors.co.uk

GC-UF 2222



"The Tooth and Nothing but The Tooth"

by
Chris 'Dr. Smile Maker'
Branfield

A Sugar That Is Good For Your Teeth, Read On

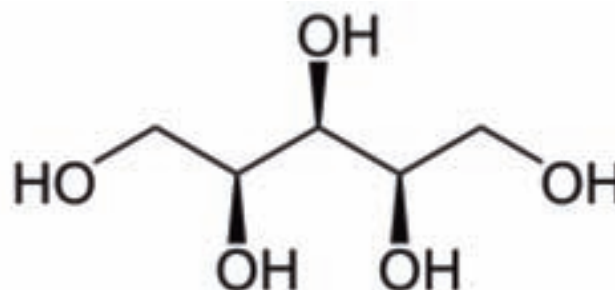
Hello again. I hope you are well and in good spirit.

I was at the British Dental Association conference a short time ago. There was a trade show and I met an interesting bloke on one of the stands. He had products that had Xylitol in them and we had a very good and interesting chat about it. I also bumped into a few people that I was at university with. It is good to catch up with old friends.

Let me explain what xylitol is. Xylitol is a sweet crystalline carbohydrate discovered in the late 1800's by German and Finnish chemists. It occurs in wood, woody plant parts and in virtually all fruit products. Xylitol is also produced in the human body. It is classified as a sugar, alcohol or polyol, much like mannitol and

sorbitol. You may have seen these other two in sugar free gum and sweets.

The real benefit of Xylitol is that it has peculiar anti-bacterial qualities and the magic lies in it's 5 carbon molecule.



Most sugars are made up of 6 carbons and xylitol, with only 5, has an advantage. Several pathogenic bacteria (ones that cause harm) cannot metabolise it so do not multiply as they would with normal sugars.

Vitally important to dentistry and oral health is that xylitol exerts a specific inhibitory effect on the bacteria most closely associated with tooth decay, streptococcus mutans. The cells of the S. mutans thrive in an acid environment, which they make as they break down sucrose (normal sugar in sweets etc.) The acid erodes the tooth enamel causing decay. The bacteria grow to form sticky plaque. Other bacteria find shelter here and can cause gum disease.

Studies that started in Turku, Finland but have carried on all over the world have shown that xylitol vastly reduces the plaque and bacteria that cause dental disease. How cool is that?

On the back of all that we have started to stock some of these products including gum and mints. They look to be extremely useful for people with dry mouth who get dental decay at an alarming rate but they will be helpful to all, including children.



Oh, I am a dental anorak, aren't I? It's good stuff though and I hope that you get some benefit from it.

Finally, the football season has ended. My daughter's team finished their first season in 11 a side. It was a very slow start but they got really competitive towards the end against some very good, experienced teams. Well done to them. However, I am sickened and much saddened by what has happened to Nick Barmby at Hull City. I think that is ridiculous and completely out of order. I would like to thank Nick personally for what he has done for the club. He got them playing some cracking football and I was looking forward to next season.

Until next time. Take care and be good.

Chris

Chris Branfield is Principal Dentist at Castle Park Dental Care, 8-9 Castle Green, Cottingham, telephone 01482 772550. He has been in dental practice for 19 years and has a special interest in life changing, pain free dentistry with dental implants, rapid teeth straightening and cosmetic dentistry. www.castleparkdental.co.uk.

Support the advertisers who appear within the Cottingham Times

End Denture Suffering

Do you suffer from ill fitting dentures, can't eat the foods you want to, or feel embarrassed because of your dentures? Need confidence?

We may well have the answer to transform your life by changing the way you feel and eat forever, improving your confidence and general well-being

Dental implants could be the solution. A revolutionary new technique called 'Same Day Teeth' means that implants and fixed bridge can placed the same day.

EASIER THAN EXPECTED

"I am really pleased with the finished result, not that I think about it anymore, and pleased I chose to have the implant . . . The treatment was easier than I expected and I have no hesitation in recommending dental implants." - Mrs Barbara Markham, Cottingham.

BETTER QUALITY OF LIFE

"The end results speak for themselves, this was the right choice for me and has given me a better quality of life . . . I have no hesitation in recommending Mr. Branfield . . ." - Mrs. Maxine McGorry, Hull.

Our patients say it best . . . at
www.castleparkdental.co.uk

For a **FREE** Consultation (Minimum value £53) and **FREE** Dr. 'Smile Maker' Guide To Implants call 01482 848428. Limited to only 17 this month so act fast. Discounts available for this cost effective, life changing treatment

Treat Yourself To The Castle Park Experience!

"You have our personal promise of quality care and attention at all times"

We Are Here
Castle Green
HOSPITAL
Castle Road

Change Your Life?

- to avoid disappointment

Call now on 01482 772550

8/9 Castle Green Cottingham
www.castleparkdental.co.uk
email: castleparkdental@aol.com

Free initial consultation for cosmetics and dental implants

You could drive away with savings on your car insurance

Age UK offers great value car insurance you can rely on all the way with no nasty surprises.

Age UK Car Insurance has no hidden fees if you need to make an alteration to your policy – a welcome change from the admin fees charged by many insurance companies. You can even spread your payments at no extra cost with interest-free monthly instalments (0% APR Representative).

And if you choose comprehensive cover and have an accident where you need to make a claim, you are guaranteed a courtesy car whilst yours is being repaired*. Age UK Enterprises has joined forces with Ageas Insurance Limited, who have won 'Personal Lines Insurer of the year' at the Insurance Times Awards 2011.

They have also won 'General Insurer of the Year' at the British Insurance Awards 2011. So you can rely on an excellent level of service and a claims line that is open 24 hours a day, 7 days a week.

To find out more, you can visit your local Age UK at:

16 North Bar within Beverley HU17 8AX

Tel: 01482 861 065

They're open Monday to Friday

from 9.30am to 4.00pm. and Saturday's from 9.00am-12.00pm

You can also call: 0800 389 4987 for cover or go online at:

www.ageuk.org.uk/carinsurance

*Subject to policy terms and conditions. ^If you call this 0800 number you may be transferred to an

Age UK/Age Concern office, or to Ageas Insurance Limited. Age UK Enterprises Limited is a commercial services arm of Age UK (registered charity number 1128267) and donates its net profits to Age UK. Age UK is a registered trademark. The use of the name and logo 'Age UK' is done so under licence agreement between Age UK and Age UK Enterprises Limited. Promoter: Age UK Enterprises Limited,

Tavis House, 1-6 Tavistock Square, London WC1H 9NA. ID200408 04/12

You could drive away with savings on your car insurance

- No hidden fees
- Interest free instalments (0% APR Representative)
- No upper age limit

Visit your local car insurance event open month for a face-to-face quote:

Throughout June

9.30am-4pm Mon to Fri and 9am-12pm Sat

Age UK East Riding (Trading) Ltd

16 North Bar within

Beverley

HU17 8AX

Tel: 01482 861065

www.ageuk.org.uk/carinsurance



Car Insurance is provided by Ageas Insurance Limited.

Age UK Enterprises Limited is a commercial services arm of Age UK (registered charity number 1128267) and donates its net profits to Age UK. Age UK is a registered trademark. The use of the name and logo 'Age UK' is done so under licence agreement between Age UK and Age UK Enterprises Limited. Promoter: Age UK Enterprises Limited, Tavis House, 1-6 Tavistock Square, London WC1H 9NA. ID200408 04/12 M3136V1JAN12 SL027963_12

Cottingham Mobility

100's of everyday items

A Local Family-run Business for all Mobility and Age Related Products



Rise Recline Chairs From £599

New Mobility Scooters From £499



New Stair Lifts From £1,250



Cheryl Roberts



Steve Roberts



Matthew Roberts

Free Delivery and Home Visits

Large Selection of daily living aids always in stock

Scooter Repairs Servicing

Wheelchairs, Rollators and Walking Aids

Used Scooters Bought and Sold

220 Hallgate, Cottingham (Next door to the Purple Cow)

Tel: (01482) 876444



Holtby Gardens – Dunswell Road, Cottingham HU16 4JX

OUTSTANDING HOMES IN AN OUTSTANDING LOCATION

Come and see the quality at Holtby Gardens

3 and 4 bedroom homes
available from £159,999



Part Exchange available
now on selected homes
at Holtby Gardens



For a guaranteed viewing - please book an appointment

Redrow Marketing Suite Open: Daily, 10am - 5.30pm

Visit: redrow.co.uk/holtby View: redrow.tv Call: 01482 908189



Your mobile operator may charge for data usage so please ensure that you have the appropriate data plan. Redrow Homes have been awarded 5 star accredited national housebuilder in the Home Builders Federation Customer Satisfaction Survey. Offer available on selected plots only subject to availability, contract and status and on completions on or before the agreed date. Terms and conditions apply. See website for details. Redrow reserve the right to withdraw or alter this offer at any time prior to the payment of a reservation fee. Offer cannot be used in conjunction with any other Redrow offer. Images typical of Redrow homes. Prices correct at time of going to press.

ADVERTISING FEATURE

NEW HOMES IN COTTINGHAM ARE STYLISH AND PRACTICAL



OOZING charm and character on the outside, new Redrow homes in Cottingham are practical, stylish and full of mod cons inside.

Designed with modern living in mind, the traditional looking homes at Holtby Gardens boast many of the features people look for when choosing a new home including ample storage space, somewhere to keep the washing machine and open plan layouts.

Patsy Aicken, sales director for Redrow Homes (Yorkshire), explains: "A new survey carried out for the Royal Institute of British Architects echoes our own research, which helped shape our popular New Heritage Collection. We both found that homebuyers are influenced by the homes they lived in previously and want a home which has 'period' features, but is practical too.

"Our homes already offer many of the things that the RIBA report says people want and need from their home. For example, the report says people want a large main living area for eating, entertaining and relaxing and the Cambridge at Holtby Gardens enables home owners to do just that. A spacious open plan kitchen, dining area and family room is at the heart of the home.



Typical Redrow Bedroom

"Another must-have is space for essential household items and in the Cambridge there's a utility room which offers a convenient space that keeps the washer, dryer and boiler out of the kitchen, as well as providing additional cupboard space."

Homes at Holtby Gardens boast well-equipped kitchens with integrated top brand name appliances including microwave, oven and fridge freezer, plus tall cabinets and extra wide drawers that offer plenty of storage. They also enjoy the convenience of a downstairs cloak and en-suite to master bedroom to complement the family bathroom, all of which benefit from quality fixtures and fittings.

Prices start from £159,999 for a three-bedroom home, with the four-bedroom Cambridge available from £284,999. And with part exchange available, those with a home of their own to sell could find they're able to make a move to Holtby Gardens quicker and easier than they anticipated.

"Buyers can save time and money with part exchange as we will buy their old home so that they can buy one of ours. With no complicated chains to delay moving day and no estate agent's fees to pay, it's the smart way to climb the property ladder," Patsy added.

Located in Dunsell Road, Cottingham, Holtby Gardens offers buyers the chance to enjoy the beauty of living in the picturesque village without having to worry about repairs, renovations or decorating.

With a choice of local schools, it's ideal for those with children. Plus, with regular trains to Hull and Beverley it's a great base for commuters.

The show homes at Holtby Gardens are open daily from 10am to 5.30pm.

For details of the latest availability and pricing, call 01482 908 189 or see www.redrow.co.uk/holtby.

A video guide to part exchange can be viewed online at www.redrow.tv



In the Garden



The Flower garden

Plant out summer bedding and seed-raised plants, if not already done so. Make sure they are well watered in and keep moist during dry weather.

Plant out cannas and dahlias once danger of frost has passed.

Finish planting out gladioli.

Gaps in herbaceous borders are best filled with annual bedding at this stage in the season, delaying any planting of permanent perennials until the autumn or the following spring. One exception is wood anemones (e.g. *Anemone blanda* or *Anemone coronaria*), which take

Green Services

- Gardening • Gravelling
- Hedge Trimming
- Turfing • Grass Cutting
- Garden Clearance
- Rubbish Removal
- Asbestos Garage Removal
- Small Demolition

Please call Guy on

842859 or

Cottingham based

07717 323077

Top 10 jobs

1. Hoe borders regularly to keep down weeds
2. Be water-wise, especially in drought-affected areas
3. Pinch out sideshoots on tomatoes
4. Harvest lettuce, radish, other salads and early potatoes
5. Position summer hanging baskets and containers outside
6. Cut lawns at least once a week
7. Plant out summer bedding
8. Stake tall or floppy plants
9. Prune many spring-flowering shrubs
10. Shade greenhouses to keep them cool and prevent scorch

about three months to flower after planting. The rhizomes are best planted now, after an overnight soaking, 5cm (2in) deep in a suitably moist but free-draining soil or compost with lots of added leaf mould or organic matter.

It is not too late to direct sow a few fast growing, late-flowering hardy annuals such as *Calendula*, *Godetia* and *Clarkia*.

Thin out direct sowings of hardy annuals. This is best done in two or three stages at fortnightly intervals. Final spacings should be between 10-20cm (4-8in), using the upper limit for tall or spreading plants, and the lower limit for smaller plants.

Prick out indoor sowings when they are large enough to handle without damage, potting them on and then planting them out once they are robust enough to resist slugs, snails and the outdoor climate.

If you want to grow your own spring bedding for next year, many common choices (including wallflowers, pansies, and *Bellis perennis*) need to be sown between May and July in order to flower next spring, as they are biennials (which live for two years, and flower only in the second year, as opposed to annuals, which live and flower for one year only).

Polyanthus primulas are best sown only when temperatures are reliably warm, as they need a constant temperature of around 15°C (60°F). A sheltered cold frame in June or July usually provides the right environment for their germination and growth.

Winter bedding plants for the following winter can also be sown from May until July. Attractive choices include ornamental cabbages, kales and winter pansies.

Spreading and trailing plants such as the annual *Lobularia* (sweet alyssum), and the perennials *Alyssum*, *Geranium*, *Heuchera* and *Aubrieta*, can become tatty and patchy. Trimming them back after flowering encourages fresh growth and new flowers.

Euphorbias look a lot better if spent flowers are removed, cutting the flowered stem back to ground level. This can be especially

Discount Plants

Bedding Plants, Fruit Trees, Climbers, Perennials, Shrubs & Trees

Full range of composts

Organic Farmyard Manure

Topsoil, Grobags, Ceramic Pots,

Colourful display of Hanging Baskets, Basket Plants, and much, much more

ALL AT LOW, LOW PRICES





important with *Euphorbia amygdaloides* var. *robbiae*, as old stems of this cultivar are particularly prone to powdery mildew when grown in dry soils.

Deadhead flowering perennials such as *Lupinus* and *Delphinium* to improve their appearance and promote a second flush of flowers later in the season.

Pinch out the leading shoots on plants such as *Chrysanthemum* and *Helianthus* to encourage bushy plants. However, if tall thin sprays are preferred, they can be left un-pinched, perhaps removing a few buds (known as 'disbudding') to encourage larger blooms.

Divide *Primula* (primroses) after flowering, planting them in a nursery bed until they are ready for planting out again in the autumn, for a display the following spring.

Divide hostas as they come into growth.

Lift and divide overcrowded clumps of bulbs after they have finished flowering.

Lift clumps of forget-me-not once the display wanes, and before too many seeds are released. They can become invasive if left unchecked.

Stake tall perennials to prevent wind damage to flower spikes.

Sweet peas need training and tying in to their supports to encourage them to climb and make a good display.

Liquid feed containerised plants every two to four weeks.

Keep tubs, hanging baskets and alpine troughs well watered. Use collected rainwater, or recycled grey water wherever possible.

Tubs can be planted up with summer bedding if not done already. You can always keep some horticultural fleece handy to cover pots in the event of a cold night or late frost.

Vegetables

Harvest spring lettuce, spring cabbage, salad onions and radishes. Continue with successional sowings of these and other salad crops. Herb crops such as basil, coriander and parsley can also be extended with successional sowings.

Early potatoes may begin to be ready for harvesting. Many are ready when the plants come into flower. Take care when digging them up to insert your fork some distance away and to lift the soil carefully. Otherwise you may pierce and damage the tubers.

Continue to earth-up potatoes not ready for harvest (unless planted through black plastic). Earthing-up is the drawing up of soil around the stems of the plants, leaving just 5cm (2in) of shoot uncovered so that the plant has enough foliage to continue growing. Potatoes can also be grown in containers.

Continue with successional sowing of salad crops, beetroot, Chinese cabbage, pak choi and radish, to ensure an even supply over the season. In hot weather, leafy salad crops may do better when sown in partially shady sites. Hot dry weather can lead to bitter tasting leaves.

Plant out tomatoes if this has not already been done. Train them up canes or string, and remove sideshoots from cordon tomatoes. These sideshoots develop in the leaf axils (i.e. between the stem and leaf), and if allowed to develop will sap the energy of the plant and reduce the quality of the yield. Small sideshoots can easily be pulled off with a thumb and forefinger, and can be easily rooted to obtain more plants. When four flower trusses have formed, pinch out the growing point just above the highest truss.

Peas need staking with pea sticks, netting, or pruned twigs from the garden.

Support the advertisers who appear within the Cottingham Times

NEWSTAR SECTIONAL BUILDINGS

Established Over 30 Years

Open Sundays 11.00am - 3.00pm

CONCRETE GARAGES & SHEDS . GREENHOUSES
SUMMERHOUSES . LOG CABINS . PLAYHOUSES &
DOG KENNELS . FULL DELIVERY & ERECTION SERVICE
BASE LAYING & REMOVAL OF OLD GARAGES & SHEDS
RE-FELTING OF EXISTING SHEDS

Tel: 01482 444256

Ash Grove, Beverley Road, Hull HU5 1LT
(Opposite The Blind Institute)
www.newstargardenbuildings.co.uk
sales@newstarbuildings.karoo.co.uk



WILLERBY FENCING

Proprietor: Mike Featherstone

We undertake all fencing jobs - At Competitive Prices
Decking Installation and Repairs
Ask for a Quotation

Tel: 01482 651962

www.spinney10.karoo.net



BRAVO LANDSCAPES



Garden design and build to the highest standard
Paving - Decking - Water features - Fencing -
Drives - Pergolas - Artificial Lawns
Imaginative low maintenance areas and much more!

Tel (01482) 844152 Mob 07985 416 665

www.bravolandscapes.co.uk

kitchensolutions
Replacement kitchen door and worktop specialists

- Over 50 door styles and colours
- Made to measure, Any size doors,
- Worktops, Sinks & Taps, Appliances
- Tiling, Plumbing, Electrical work
- All work guaranteed

Transform your kitchen at affordable prices
Free, no obligation Quote call today 01482 841551

 **THE HEALING HUT**
221 HALLGATE, COTTINGHAM
Telephone: 01482 842078

COTTINGHAM DAY
7th JULY 2012

Experience Relaxing Foot Massage
10 minutes for £2.00
(Money goes to Rugby Tackling Teenage Cancer)

You will also be able to order Aloe Vera Products
(NB. These must be paid for [in cash or cheque] at time of ordering)

Make a date in your Diary

SENSATIONS
Nails :: Beauty :: Chiropody
A warm, friendly relaxing atmosphere awaits you

Introducing
Sculptured Nails
by Jeannie

(£10 off full set of sculptured nails only with this advert)

Christine Wanless,
B.Sc. (Hons.) Mchs
HPC Registered Chiropodist/Podiatrist
All aspects of footcare and orthotic management

Sunday/Late Nights :: Appointments available

181 HALLGATE, COTTINGHAM
Tel: 849068

Your Stars for June 2012 - By Kay Gower

Aries - (Mar. 21- April 20)

With Venus retrograde, it may be harder than even to express how you feel or put a finger on what might be bothering you. You are facing the ending of the old so that there will be room for the new, and it is natural to be slightly off balance during this time.

Taurus - (Apr. 21- may 21)

You can command the weather all you want, but it's still going to do its own thing. Your best bet this month is to be prepared for any scenario you can dream up ... and then remember to keep a flexible attitude.

Gemini - (May 22-June 21)

You enjoy being a spontaneous, free spirit, but the next three weeks will dictate that you behave otherwise. That doesn't mean you can't have some fun this month... just that the Universe has appointed you the Designated Driver for June.

Cancer - (June 22-July 22)

Your secrets are safe with you. Not so much with your friends. This month is no time to spill the secrets of the past, not even those that seem silly and harmless. Things may get twisted in the retelling.

LEO - (July 23-Aug 22)

A Full Moon and Lunar Eclipse in Sagittarius on June 4th only solidifies changes that began with the New Moon and Solar Eclipse in Gemini two weeks ago. Your closest relationships could suffer this month. Venus planet of love is still retrograde, making it hard to express yourself with your partner.

Virgo - (Aug 22 - Sept. 23)

You can be successful this month, but you still need to slow down and take care of yourself. There are people who love you and will do everything necessary to help. Learn to delegate, so that you'll have more time to recharge your physical and spiritual batteries.

Libra - (Sept. 24 -Oct. 23)

This month, try and understand the effect unconscious motivations have on you, especially when you pretend that nothing bothers you ... and you soldier on. More than ever, you need to speak up! There will be plenty of people cheering you on, all you have to do is stand up for yourself.

Scorpio - (Oct. 24 - Nov. 22)

You relate to others with ease, but there will be times when you will prefer to be alone. There's something you're working on — a feeling you want to process or an artistic impulse that needs to be sorted out in silence. It is important that you make time for yourself this month.

Sagittarius - (Nov. 23 -Dec. 21)

While you pride yourself for being spontaneous, this is one of those times to reel it in. Impulsive choices will haunt you later — for instance, buying what you don't need.

Capricorn - (Dec 22.- Jan. 20)

Change is in the air and it will eventually be for the best, but first you have to put your plans in place. This is only the beginning, so have patience.

Aquarius - (Jan. 21.- Feb. 19)

You're likely to go on a wild goose chase and wind up with not even so much as a feather for your trouble. Are you better for this adventure? It may not feel like it, but at least you know which avenues not to travel down next month.

Pisces - (Feb. 20-Mar. 20)

The planets are now in a fine position to help you, and even though there's no strong reason to expect that something good is about to happen, you believe your ship is about to come in. And your intuition is spot on, as usual.

PUBLIC ANNOUNCEMENT from Hull and East Yorkshire Hospitals NHS Trust

17th May, 2012

Land at Castle Hill Park, south of Castle Hill Road, Cottingham

Hull and East Yorkshire Hospitals NHS Trust is to reveal plans to promote hospital-owned land for the delivery of much needed housing, employment opportunities and local community services.

The Trust will hold an exhibition event on **Thursday 21st June from 4pm to 7pm in the Methodist Hall, Hallgate, Cottingham.**

The land is currently in agricultural use and lies immediately opposite Castle Hill Hospital at Cottingham. All monies raised through the sale of this land for development purposes will be reinvested in to patient care.

Hull and East Yorkshire Hospitals NHS Trust employs over 8,000 staff and serves a population of 600,000 people. Its specialist services include cancer, cardiac, neurosurgery and renal services. The Trust manages both Hull Royal Infirmary in Hull and Castle Hill Hospital.

The Council has over the past three years been involved in the process of writing a new Local Development Plan for the whole of the East Riding and is expected to complete this process over the next 18 months. During the early part of the Plan preparation, the Council sought expressions of interest from landowners to put forward parcels of land available for development to meet both housing and business needs. Land at Castle Hill Park was one of the sites submitted which has been reviewed by the Council and accepted as a site containing very few barriers for development. In other words the land is suitable and available and, subject to an appropriate layout and design, would make a sustainable extension to the settlement of Cottingham.

The Council's new Plan currently intends to allocate 14% of the District's total housing provision to the three Haltemprice settlements of Anlaby, Willerby and Kirk Ella (combined), Hessle and Cottingham. This means a total requirement of around of 3,570 dwellings for Haltemprice with a general acceptance that Cottingham will receive a requirement for at least 1,190 new dwellings over the Plan period.

The Trust's land immediately south of the hospital is greenfield but not Green Belt. Whilst there is a recognition that the identity of the Haltemprice settlements needs to be preserved by avoiding their merging through excessive development, the land promoted by the Trust represents a relatively thin strip that maintains and respects the need to keep the area between settlements open.

The Trust hopes to see up to 600 new homes (which includes key worker housing for NHS staff, older persons' accommodation and a dementia housing facility), a primary school, a small medical business park, a medical centre and pharmacy, and a convenience store. Plans also include extensive community use areas of green open spaces, sports pitches, allotments and an orchard.

Duncan Taylor, the Trust's Deputy Director of Infrastructure and Development, said: "There is a significant unmet need for additional housing and services in Cottingham. Hull and East Yorkshire Hospitals NHS Trust would like to work with East Riding of Yorkshire Council, Parish Councillors and local residents to establish whether or not we can help provide some land to meet this need. In doing so, we are extremely keen to listen to the views of local people and will be holding a public exhibition on **Thursday 21st June from 4pm to 7pm in the Methodist Hall, Hallgate, Cottingham.** We wish to share our emerging thoughts and plans and to seek residents input and comments. We therefore extend an open invitation to the community of Cottingham to attend". He also added that "The Trust proposes to seek an outline planning approval which incorporates a strict development design code that will tie any future developer to design standards that reflect the character of Cottingham".

Alzheimer's Society Memory Café to open in Cottingham

Alzheimer's Society is pleased to announce that they are expanding their services in the East Riding of Yorkshire, which has led the way to opening a new dementia Café in Cottingham. The café is for people with dementia/memory problems, their carers, families and friends, there will be a variety of activities and the opportunity to have a chat and access information and support.

The first Memory Café will be held on 12th June 2012 and will take place on the second Tuesday of the month, between 1.30pm and 3.00pm, at the Holy Cross Church, Carrington Avenue, Cottingham, HU16 4DU.

For further information please contact the Dementia Support Team on 01482 211255.

Frank Pullan Butchers

143 Hallgate, Cottingham HU16 4BB

Tel: 01482 844763 :: Fax: 848213

email: noons@pullanbutchers.karoo.co.uk



Barbecue Packs

made to your requirements

10 Varieties of Sausage

including Gluten Free

5 Varieties of Burgers

including Gluten Free

GET YOURS NOW!!

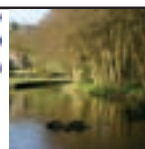


MOLE'S HOUSE

A wonderful family house on the North Yorkshire Moors.

Sleeps 9, Short breaks from £250.

For a leaflet tel. 01482 875129 or 01482 840069



The Old Manse

Self Catering Holiday Home

Short Breaks from £140

Weekly Breaks from £650

Accommodation Sleeps 8,

travel cot/high chair available

Family Friendly, Set in 1/2 an

acre of secluded gardens

www.theoldmanse-glenshiel.com

Bookings 01482 656148

Country Cottage Holidays

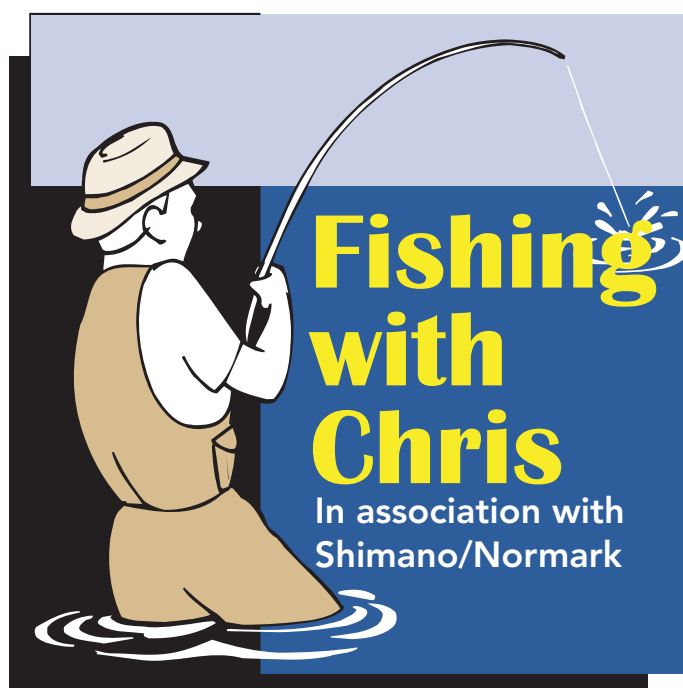
Cottages in the beautiful
Countryside of the Yorkshire Dales
Wensleydale and Swaledale
Pets Welcome

For brochure please ring

Telephone: 01969 667654

www.countrycottageholidays.co.uk

For more information on how to advertise your holiday home in our next edition please telephone Cottingham Times on 01482 840035.



Here is the latest article from Chris who will be reporting monthly with news and tips from the world of fishing

Hello and welcome once again fellow anglers to this month's fishing news. The date is 14th May.

Has it stopped raining yet? Even though it has been the wettest drought on record, some of us have been fishing through all the bad weather and had great time. I mention this as I know a lot of anglers never go fishing when rain is forecast, plus, as we all know how often is the weather forecast correct? Not often! How many of you anglers out there do not have a broly or the wet gear, not many. Go out there and have a good time, and just because it's raining, believe me, there are still many good times to be had.

We at Catchmoore A.C have just had our first two matches of the 2012 season and it rained on both occasions, but everybody caught and had a lot of fun doing so.

One of our matches was at Halsham Old Pond which is on the B1362 Witherensea road (entrance on Dalton Lane). What a surprise I got, there is a massive change there; for a kick off I have not fished there in at least 20 years!! I was shocked to see there are now three lakes in situ. It looked very good, plus a chemical toilet that actually smells nice. Anyway the fishing was brilliant, I personally caught Carp up to 9lb, and loads of Rudd, Roach, Skimmers, and on the day Perch, Bream, F1's and Barble was caught. The new owners seem to be very nice people who are trying to give you a very good fishery; once again we had a brilliant day in rubbish conditions. So, what could you catch on a good day? Check it out and I think you will be pleasantly surprised.

Halsham Ponds: 01964 670481, tell them Chris from Catchmoore sent you, you never know you may catch the 30lb plus in there.

Talking of match fishing, there is a lot to be learnt from a match angler. Have you ever wondered why they often catch twice as much as you on a pleasure day? The answer is simple; firstly, it is to do with presentation, everything from the hooks to line, elastics etc. They make sure everything is 100 % correct before they start fishing. A good match angler in a match won't even start fishing when the whistle blows if the tackle they use is not correct. It is better to take your time, and the results will speak for themselves. Secondly its bait choice and how to use it. There are many good tips on bait preparation, such as sieve your ground bait and make it fluffier. If you use expander pellets do them the night before and place the covered pellets in the fridge overnight. This makes them even better. If you wish to use additives do not overdo it, remember you can always add a little more but you can't take it out. Finally, and I know I have mentioned this loads of times before, feed little and often. Now and then watch that good angler on the bank; it is amazing what you can learn by just watching.

A reminder about rubbish, please take all your rubbish home and do not leave it on the bank please.

Can you all keep your results and reports coming in to me, thank you.

Finally, in store we still have an all year round savings scheme and gift vouchers are available.

From the Catchmoore Crew "tight lines".

CATCHMOORE FISHING TACKLE

Everything for your fishing needs

259 Greenwood Avenue

Hull HU6 9QA

Tel: 01482 803260



Dizzy's of Cottingham celebrate their 11th birthday during June

Dizzy's of King Street, Cottingham are celebrating their 11th birthday during the month of June. To celebrate they are holding a number of fun events to raise money for the British Heart Foundation.,

* We have been open 11 years and to celebrate we are trying to raise money for British Heart foundation. Over the next few weeks we are doing a number of different things. Raffles, Cake/bun sale, etc.

* Dizzys was established in 2002 with three members of staff. We now have a team of eight staff most who have been with us over eight years.

* All our staff, receive Wella training at least twice a year and are qualified up to Wella Premier Standard. We have excellent Colouring knowledge we can offer personal advice to each client individually.

* Throughout the year as a salon we achieved our Health and Safety award, in the work place and five of the team have achieved the First Aid Emergency Response certificate.

* We are a friendly, professional salon and we all hope you will come and pay us a visit soon.

* We would also like to thank all our current clients for their loyalty over the last 11 years.



To Celebrate our 11th Birthday

All our Cottingham Times readers are offered a Free Shampoo and Finish with every Cut, Shampoo and Finish –

Saving you £14.55
and receive 20% off your next Colour.

Offer ends Saturday 30th June 2012

(NOT IN CONJUNCTION WITH ANY OTHER OFFER OR DISCOUNT)





28 KING STREET, COTTINGHAM HU16 5QE
TELEPHONE: (01482) 848494

CAVE CASTLE HOTEL & COUNTRY CLUB

Spa Breaks

Enjoy 2 treatments at The Castle Spa before evening dinner in the Windsor Restaurant followed by an overnight stay and breakfast.

All this from only **£105.00 per person** sharing double or twin

Ladies Day at Beverley Races

Wednesday 15th August
Enjoy a great day out with friends

£105 per person including entry tickets, transport to and from, supper, bed and breakfast

Vegas Night

Friday 7th September
With Elvis, disco and supper
PLUS gaming tables to keep your dice rolling all night!

£28 per person
Stay overnight - £80 bed and breakfast for two!

Abba Tribute Night /70's Night

Friday 28th September 2012
2 course dinner, entertainment & disco
£19.75 per person
Stay overnight - £80 bed and breakfast for two!

Murder Mystery Weekend

Friday 12th - Sunday 14th October
Join us for a thriller weekend, watch the murder unfold & unravel who dun it!

£170 per person

Murder Mystery Evening

Friday 23rd November
Enjoy a 3 course dinner, see the plot unfold & help solve the murder

£32 per person
overnight package from £145 based on 2 sharing

Call 0844 686 2235 for further information
Cave Castle Hotel & Country Club, South Cave



Property News from Martin English of Homelink



Building Regulations

Building control protects you and the general public by ensuring that buildings are safe and healthy places for people to be in. The regulations apply only in connection with a building; freestanding garden walls, fences, paths or drives aren't covered.

This department is also responsible for checking that any building work is energy-efficient. Comprehensive regulations are laid down concerning materials and methods of construction, assessment of plans and mandatory site inspections confirm that the building work you undertake conforms to current requirements.

Planning and Building

Major building work will always require a plan and the services of a building surveyor, building technician or architect, all of whom should be aware of the current regulations, the required inspections and how they apply to the work you're undertaking. These regulations are updated annually and mean that any builder must conform to certain standards of construction and workmanship.

Planning regulations determine what you can build. Building regulations control how you must build it. Granting of planning permission doesn't mean you've received building control approval and vice versa.

Both of these departments are based at your local council. They're usually helpful, informative and reasonable. They're there for your protection and that of your neighbours.

Planning permission

The planning system is designed to protect the environment in the public interest, not one person's interests over another. If you build something that needs planning permission without obtaining permission first, you may be forced to put things right later, which is not only troublesome but also potentially costly. In extreme circumstances you could be required to remove unauthorised building. It's usually quite a logical and fairly transparent system.

When do I need planning permission?

Certain types of changes can be made to your home without planning permission. These rights are called 'permitted development rights'. Specific advice on your situation should be sought from your building surveyor, technician or architect.

For listed buildings and conservation areas, these attract greater restricted governance and care should be taken to take expert advice and consult your local planning department at an early stage of any proposed development.

General repairs, replacing like with like, without altering position, size, construction or materials used, are exempt. If in doubt about whether building regulations apply to the work you're contemplating, check with your local building control office.

How do I get permission?

If you decide that the work you're considering falls under the remit of building regulations, there are two methods of applying for approval.

Full plans: Major work will require the submission of fully detailed plans, specifications, calculations and other supporting details to enable the building control surveyor to ensure compliance with the regulations.

The amount of detail depends on the size of the project. A formal notice of approval or rejection is issued within a legally set period of five weeks. The work is then inspected periodically as it progresses; there's a legal requirement for certain stages of the work to meet approval before you may proceed.

The approved plans give you a degree of protection provided the work is carried out in accordance with those plans. The inspectors are generally able to offer advice and help throughout the construction phase.

Building notice: This is generally less often used and relates to smaller projects. A full plan is not required. It's used where only a very small amount of work you're contemplating falls within the scope of the Building Control Office. If you have any comments or suggestions about the column or you have any property related questions that you would like me to cover please feel free to contact me at menglish@home-link.co.uk 01482 875248 or contact through *Cottingham Times* directly.



"The professional family business, that really cares"

Sales :: Lettings :: Buying :: Renting

Swanland Five Bedroom Detached House <ul style="list-style-type: none"> Five Bedrooms Character Property Impressive Walled Grounds Driveway & Garage Three Bathrooms Verandah Orchard & Woodland Large Feature Fireplace  <p>£1,350 pcm</p>	Cottingham Four Bedroom Semi-Detached House <ul style="list-style-type: none"> Garage Gardens Gas Central Heating Living Room Dining Room Two Bathrooms Spacious  <p>£850 pcm</p>	Cottingham Three Bedroom Semi-Detached House <ul style="list-style-type: none"> Three Bedrooms Pvcu Double Glazed Garage Private Garden Recently Refurbished Modern Kitchen Modern Bathroom Feature Fire  <p>£675 pcm</p>
Cottingham Two Bedroom Apartment/Flat <ul style="list-style-type: none"> Very Spacious Apartment High Spec. Conversion Two Double Ensuite Bedrooms Modern Fitted Kitchen All Integrated Appliances Large Living Space Juliet Balcony Off-Road Parking  <p>£600 pcm</p>	Cottingham Two Bedroom Apartment/Flat <ul style="list-style-type: none"> Two Double Bedrooms Fitted Kitchen Built-in Appliances Fitted Wardrobes Communal Gardens Superb Location Intercom Entry System Double Glazing  <p>£465 pcm</p>	Cottingham One Bedroom Apartment/Flat <ul style="list-style-type: none"> First Floor Private Entrance Double Bedrooms Large Living Room Secure Parking Double Glazing Gas Central Heating  <p>£375 pcm</p>

For more information on our properties contact Homelink at 01482 875248
www.home-link.co.uk



Imogen Barber one of East Ridings 'Talented Performers'

Imogen is arguably the brightest young table tennis star to hail from the East Riding of Yorkshire for many years. Achieving National Honours in the English Table Tennis Association National Championships over the last two years (Imogen has only entered the National Championships on these two occasions), and winning many local and National events.

All this by the tender age of 12 within less than three years of picking up her bat for the first time. On these two occasions she achieved a silver and two bronze medals, one of the bronze in the age category above hers.

Imogen has not only been recognised as an exceptional talent within table tennis but the East Riding of Yorkshire Council has also recognised Imogen as one of the county's 'Talented Performers'.

She is a gritty and determined competitor who is a regularly on the ETTA's England Youth development squad. She is Yorkshires #1 at Under 13 & Under 15 age groups and working her way to the top of the national rankings. Last year she represented the Yorkshire Under 18, 2nd team at only 11 years of age. This year she is due to represent the North East of England in the Sainsbury's UK school games. The costs for Imogen to realise her potential as a future England player are in excess of £6,000/annum. She does travel the length and breadth of the country in her quest, so we are looking for sponsorship, which will also be seen all over the country and regularly in the local media (TV and Newspaper). Further details can be seen at <https://sites.google.com/site/imogenbarbert/home>.

Finkles Boutique

Cotta Court, Cottingham

Summer Stock Now In

Large selection of Shrugs in all colours
Fashion at Affordable Prices to suit all Tastes

KING STREET

HALLGATE

FINKLES

FINKLE STREET

COTTA COURT

WE ARE HERE

For Something different Shop Local!!

We're online with most insurers - so you don't have to be

Come and try the Hedon Insurance experience for yourself at 195 Hallgate

local offices ☒

friendly people ☒

great prices ☒

face to face service ☒

Paul Welsh

Home Buildings Insurance

Home Contents Insurance

Motor Insurance

Taxi Insurance

Travel Insurance

Business Insurance

Pre-paid Funeral Plans

Life & Health Insurance

Pensions & Investments

Phone us now on 707 800

Other offices in Hull, Hedon & Hornsea

Hedon Insurance

Hedon Insurance is authorised and regulated by the Financial Services Authority

Keep in touch with us at www.hedoninsurance.co.uk

Follow us on Facebook & Twitter

www.premierroofing.co.uk

24 HOUR CALL OUT

Fast, Friendly Service

Premier Roofing Ltd.

Domestic & Commercial • Felt Roofing • Fibre Glass

• Fascias • Soffits • Rainwater Systems • Tiling • Cladding

TELEPHONE: 01482 571870/07813 118129



**Melanie Watson of
Skidby Livery Stables**
with the latest of her monthly articles
www.instinctivehorsetraining.co.uk

The Fourth Element

All year round, owners send me their “problem” horses to solve their “issues”. Often owners talk to me about their horses problems at length and describe them in detail but I am unable to diagnose a situation until I can see it in reality. Owners and riders tell me one story and the horse tells me another story and they sometimes, often, don’t match. This is no one’s fault; it is simply that situations have many perspectives without considering the species barrier!

In reality, I work with horses in many circumstances, breaking them in, schooling them on and dealing with quirks and personalities in addition to working with horses with learned behaviours and tricky problems.

All of the situations I see require the following inputs to progress them to a happy resolution for horse and owner/rider:

- A calm environment for learning
- An expert/s who can work empathetically with the horse
- Time with the horse for an appropriate period
- Time to work with the owner/rider and the horse together

Of these four crucial elements, the last one is arguably the most important for the continued success of the techniques. After all, what the owner wants is a problem solved for the long term and in the home environment and not just at my yard!

Good behaviour on my yard does not help the owner for their plans for happy hacking, competing or decent behaviour on the ground, it simply must translate into good behaviour and success at home.

It is also perhaps true to suggest that this element is also the one that is paid the least attention by owners. After all, some owners work full-time and/or have families and cannot come to my yard every day, some live hundreds of miles away and are unable to visit regularly.....

One customer of mine who sent her horse to me two years ago said to me that she had not considered that so much input would be required from herself and she found it very hard to fit

that in to her busy work/family balance. However she did, with some juggling and the judicious use of half-days of holiday and reaped the rewards subsequently when she was able to apply learned techniques herself back at home.

I would urge owners to discuss this with me when we set up a plan for a horse to visit my Skidby yard. My standard response when asked “when should I come” is “as often as you possibly can” and this is true. The more time an owner can spend watching me work their horse, learning the techniques and working their horse under my supervision the better.

The owner then has new knowledge and skills, is confident using the techniques and will go on to use them at home. This obviously benefits all parties; the horse, myself and the owner and delivers a successful outcome for all parties!

I had a conversation last night with a lady whose horse won’t leave the yard for her. Every day she ends up getting off her mare and leads it for 3 minutes up the road. That procedure done, she is then able to remount and ride away happily. Apparently the horse is good for everyone else and they don’t have this problem at all.

She wanted to know why this was happening to her alone.....however as the conversation progressed there were snippets of information rising to the surface which started to explain where this horses lack of respect stems from.

The mare dominates her on the ground in various ways. Interestingly she does not allow any other horses to come into the vicinity of her owner in the field...in other words it protects her as her leader. When those dominant type leadership qualities are needed in reverse, from the owner towards the horse they are so very obviously not there! The horse simply allows itself to be ridden out by her owner ...only on her terms!

All this can and will change when I go to visit but it might not be so easy to put in the changes if the owner cannot find in her soul to stop treating this horse as her child replacement. It does not require pain, whipping, shouting or aggressive riding, it simply needs a role reversal on the ground in their daily lives together.



Pictured above is owner Vicky who has spent a great deal of time learning how to work her horse and is now reaping the rewards.



Skidby Scarecrows will be returning

We are pleased to announce that the Scarecrows will be returning to Skidby over the weekend of 13th, 14th and 15th July. Please book the dates in your diaries and we'll be delighted to welcome you into Skidby to enjoy our 3rd Scarecrow Festival.

Residents planning to make a Scarecrow should obtain their Registration Form from the Scarecrow Secretary, Kelvin Young, 27 Orchard Road, Skidby. (01482 843446) or visit our website at www.skidbyvillagehall.btik.com.

Additional attractions will be provided by a "live Scarecrow" (Saturday and Sunday), the White Rose Falconry Group (Saturday) and the Beverley Brass Band (Sunday).

Proceeds from the event will go to the Skidby Village Hall. We are looking forward to a brilliant weekend of fun and entertainment for all the family.

BEAUTIFUL HAND-FINISHED ENERGY EFFICIENT WINDOWS

up to **40% Off** Windows
up to **30% Off** Conservatories
and **Composite Doors** from under **£700**
Upgrade your existing windows with
Planetherm Energy Saving Glass (as seen on TV)



FREE QUOTATIONS
COLFAX
WINDOW SYSTEMS LTD

Over 30 Years of Excellence

Manufacturers and Installers of

WINDOWS ■ DOORS ■
CONSERVATORIES ■ ORANGERIES
■ CONSERVATORY UPGRADES

Trade Enquiries Welcome

Ample Free Parking :: Open 7 Days

TEL: 879077
LEADS ROAD, HULL



Zanussi 'Jetsystem' 1600 Spin 7Kg Washing Machine

Laundry might be one of life's necessities - but that doesn't mean it has to take over your life! The Jetsystem washing machine automatically alters water, energy consumption and cycle time according to the size of your load. As a result, you can also wash smaller loads with minimal use of water and energy.

- 1600 Rpm Spin Speed
- 7Kg Load Capacity
- A++AA Rated

Model Number : ZWH7162J

1600 RPM

7KG

LCD

21 PROGRAMS

A++

2 Year Guarantee

AS SEEN ON TV

ONLY **£399.99**

PLUS **£50 CASHBACK**

SEE INSTORE FOR DETAILS

Available From Your Local Euronics Agent

BONUS

ELECTRICAL SUPERSTORE

Grange Park Lane (behind Waitrose Supermarket), Willerby
Opening hours: Monday to Saturday 9.00am till 5.30pm and Sunday 10.00am till 4.00pm
Tel: 01482 659888
www.bonuselectrical.co.uk

ZANUSSI

FREE Local Delivery
FREE Removal of old Appliance

This product is sold by us as an agent on behalf of Euronics Limited ("Euronics") Registered in England number: 2029834



Pub to pub bike ride brings in the pounds for Teenage Cancer Trust

On Sunday 22 April Peter Cooper organised a pub to pub fundraising bike ride in aid of Teenage Cancer Trust's unit at Castle Hill Hospital.

Staff and regulars of the Fair Maid pub in Cottingham took to their saddles to take on the 36 mile route, riding from the Fair Maid to the Marine pub in Hornsea along the disused railway. The group did amazingly well with all 28 riders completing the challenge and even a few light showers couldn't stop them! Over £3,500 was raised from the event.

Teenage Cancer Trust is the only UK charity dedicated to improving the quality of life and chances of survival for the six young people aged between 13 and 24 diagnosed with cancer every day. The charity builds specialist units within NHS hospitals, bringing young people together to be treated by teenage cancer experts in a place designed just for them.

Teenage Cancer Trust has funded, built and now maintains 21 of these units across the UK including one at Castle Hill Hospital which opened in December 2011. The charity plans to build a further 11 so that all young people needing hospital treatment for cancer across the UK have access to the dedicated, specialist support they provide, no matter where they live.

The Fair Maid will be doing other fundraising activities in aid of Teenage Cancer Trust over the summer including a Family Day on 3rd June and a sports quiz on 4th June.





Queen's Diamond Jubilee celebrations at KG V Playing Fields Cottingham Monday 4th June 2012

Bring your picnic rugs and folding chairs and come and join us for a full-day's celebrations to mark this once in a lifetime event.

2pm	Official opening
2.30pm – 4pm	Family races with a Royal theme
4pm – 5pm	Street Party for Children (confirm place required at emma@kgvcottingham.org.uk)
4.30 – 6pm/	Local Bands
5pm – 6pm/	Children's Entertainer
5pm – 6.30pm	Football tournament (register teams at emma@kgvcottingham.org.uk)
6.30pm	Lads V Dads football
7pm – 10pm	Celidh Band
10pm – 10.30pm	Beacon Lighting
10.30pm	Firework Finale

Alongside these events will be an exhibition of Cottingham in the 1950s, a Community Mosaic as a lasting memento of the day and a Visitors Book to record your thoughts, as well as sport & dance demonstrations, face painting, craft stall, tattooist, cake stall and much, much, more...

Visit www.kgvcottingham.org.uk



Think you know Scouting???

On Cottingham Day (7th July 2012), Cottingham Scout Group will be welcoming the National Scout Mobile Display Unit (MDU). The MDU contains loads of information and videos on one of the largest movements in the UK and how Scouting is today – you'll be amazed as to how much it's changing!

We are bringing the Crockery Smash to the Green. Why not have a go at smashing as many plates, bowls and cups as you can for £1. You can also try out the Bouldering Wall for FREE!

We'll be handing out balloons for the children, so why not pop and see us, and have a smashing day!

Pictured above: The National Scout MDU that will be visiting Cottingham Day 2012.

Riser Chairs, Acorn Stairlifts, Wheelchairs & Scooters

- Walking Aids • Incontinence Products
- Commodes • Hundreds of Daily Living Aids



Rapid
CARE SHOP

A trading name of North Eastern Care

Call: 01482 565626

752 Spring Bank West, Hull

*"Peter's a man you can trust.
He always gives a really good deal."*

Quality • Integrity • Service • Strength



Home
visits and free
delivery

Any
colour
& size

FSB
MEMBER



**PIZZAS :: BURGERS
KEBABS
AMERICAN FRIED CHICKEN**

Gino's Pizza and American Fried Chicken Takeaway is situated on Hallgate, Cottingham, near the junction with George Street and opposite the United Reform Church.

He has been established for the past six years and has built a reputation for providing excellent quality food and excellent, friendly service.

He has won the coveted Fast Food Guide Quality Award for Excellence in 2010 and now 2011. He also has the Outstanding Achievement Award for Distinction for Excellence in maintaining High Standards of Quality and Customer Service, by The Good Food Guide 2005.



Gino's have not increased their prices despite the increase in VAT in January, so come and enjoy a superb takeaway at really value for money prices.

There is ample parking on Hallgate and in the nearby side streets.

Gino's is a bright, clean and friendly premises, and there is a small well-lit waiting area. There is an excellent choice of Pizzas, Burgers, Kebabs and Fried Chicken, and the meals are of ample proportion, even for the biggest appetites. There is also a Gino's Kids Club menu.

The meals are of excellent size and quality and the Mega Meal at £11.99 is superb value for money.

Gino's is now open from 4pm till midnight every day, and is open till 1.00am Fridays, Saturdays and Bank Holidays to provide his customers with good food for longer.

There is a local delivery charge of £1.00 (subject to change). Visit Gino's soon.

You can now download Gino's Menu from the Cottingham Times website www.cottingham-times.co.uk under Takeaways. Download the menu, make your choice and telephone Gino's and order your meal, and enjoy.





HANNAM Upholstery Company Ltd

1b Main Street, Willerby,
East Yorkshire HU10 6BP.
Tel/Fax: (01482) 658787

**Maybe the new sofas you've been
looking for are right under your nose**



Before buying a new suite or sofa, take a look at what your sitting on. We can totally transform your existing furniture, re-upholster it in the latest modern, or contemporary fabrics. Re-style it or sometimes even re-shape it. Don't throw away a quality piece of furniture and replace it with rubbish. If you have a quality suite, then it will be worth letting us bring it back to life. A good frame will last for ever. Ring or call in to see what we can do for you, We will give an honest opinion on it if your suite is worth spending money on.

School's Out - Ideas for a fun summer

The School's Out 2012 brochure will soon be available and is packed with exciting activities to keep children and young people entertained during the long summer holidays.

The brochure, produced by East Riding of Yorkshire Council, is now in its seventh year and will be delivered to over 20,000 families of primary school-aged children as well as 11-13-year-olds who attend school in the East Riding.

School's Out will be available in early July and gives parents and carers plenty of time to plan activities and keep children active.

Lesley Gilson, manager for Families Information Service Hub (FISH), said: "The Schools Out brochure is packed full of activities including archery, balloon modelling and den-making with the council's sport and play team.

"There are also details of voluntary sports clubs as well as sports and activities for disabled children and young people."

Copies of School's Out 2012 will also be available at venues across the East Riding including customer service centres, libraries leisure centres and schools.

It will also be available to view on-line at www.fish.eastriding.gov.uk at the end of June.

To find out more about School's Out 2012, call the FISH team on (01482) 396469, email fish@eastriding.gov.uk.



ENTERTAINMENT

Cottingham Day 2012

"Come to your favourite café to enjoy Cottingham Day"

**FACE
PAINTING**

BBQ

Serving from 12pm

Food available to takeaway

*"OPEN FOR TAPAS
FROM 5PM"*

218 Hallgate, Cottingham. HU17 8FQ. Tel (01482) 876333

News from the Darby and Joan Hall, Finkle Street, Cottingham

Things are running smoothly at the D & J, where bookings have exceeded all expectations in the last twelve months, thanks in many ways to the input we have received from our adverts in the *Cottingham Times*.

It is worth reminding readers that the Darby and Joan Hall in Finkle Street is not just for the older generation but is available for the whole community, on the lines of a village hall really. The main event must surely be the provision of around 150 meals every Friday for club members.

Other activities include children's parties, keep fit, Zumba, whist and bridge clubs, Little Theatre productions, U.3.A, Cats protection, dancing schools, private parties and functions etc.

Why not enquire for YOUR next birthday party or reception! Two rooms are available: large hall (with stage if needed) for up to 140 or cosy small room 50 persons max.

Both have kitchen facilities included. Parking is free on the premises plus the bonus of disabled toilets, air conditioning and a host of other benefits. Give Jenny a ring on 343609 for more details or even a look round the premises. So why not book for YOUR next event!

Village

Tea Rooms

Open Tuesday to Sunday
10.00 am to 4.00 pm

**Serving: Teas, Coffees,
Snacks, Cream Teas,
Sandwiches & Light Lunches**

*"Relax in tranquil surroundings
at the Village Tea Rooms"*

**Croft Park, Rowley Road,
Little Weighton, Cottingham HU20 3XJ**

*"Hop on the regular Bus Service 180 or 182
which stops a 100 yards from Croft Park"*

01482 841100



The Darby & Joan Hall

- COMMUNITY BUILDING FOR ALL ● MEETINGS ● RECREATION
- SEASONAL FAYRES ● THEATRE (Stage & Lighting)
- HEALTH ACTIVITIES ● PARTIES (all ages) ● RECEPTIONS



Main Hall with Stage

- Large Hall (seating for 140)
- Small Meeting Room (capacity 50)
- Fully Equipped Kitchen
- Disabled Access and Toilets
- Air Conditioning
- On-site Parking



The Small Meeting Room

COMPETITIVE RENTAL COSTS

By the Hour/Half Day/ Full Session - Please ring JENNY FISHER for Rental Fees/Inspection

Tel: 01482 343609

The Darby & Joan Hall, 58 Finkle Street, Cottingham, East Yorkshire HU16 4AZ

Moving Abroad?

A monthly column by Nick Russell

A New Home in the Sun

This is the fourth instalment in our search for our dream home in Southern Spain. We have now found the house we want to build our future and business in, and in this issue we will go through the completion process of buying a property in Spain. This is not as straight forward as in the UK however. If you would like any more information, please contact me at nickruss@hotmail.co.uk.

We have at last agreed a deal with the agents for the six bedroom cartijo, with land, near the village of Tocon, close to Granada. As in the UK, we had to appoint a lawyer to deal with the legal side of things. Because we did not know anyone over here, we asked the agent Paul if he had any body he could recommend and of course he did.

In Spain a lawyers role is very similar to that in the UK, except after he has done all the legal searches and checks, he passes the contract side over to a Notary. When you are buying a property in Spain, your lawyer will also check for any outstanding debts, such as unpaid utility bills, HP payments, mortgages etc. As any that come to light after the purchase, become your responsibility. It also helps if he can speak English as all the documents and contracts are written in Spanish and need some translation.

Paul's invaluable help

We ended up using Paul's recommendation, a guy called Alvaro Marquez, who many of Paul's clients have used in the past. A meeting was organised for the next day to discuss the purchase. Unknown to us at the time, was that he was to become invaluable to us further down the line. Thankfully, he spoke really good English, as well as several other languages.

Alvaro went through all the legal side of the purchase and all the extra costs that are added to the agreed price. In Andalusia, you need to have between 8% to 10% to the agreed price for taxes and legal costs, so make sure you have budgeted for that. Having agreed the price, the purchase process starts with the signing of a holding document, called a 'Serial'. This fixes the price and the agent takes the property off the market, the vendors provide proof of ownership and the buyer pays a small deposit of around 3000 euros. Now the lawyer starts to earn his money and carries out searches at the Land Registry and at the Town Hall, for any unpaid bills etc. Once all the checks have been carried out, and this takes up to three months, the next step in the process is called 'completion' and means signing the Purchase Deeds in the presence of the Notary, who's fee is fixed, but the final price can depend on the number of documents, pages and even the number of names on these documents.

Transfer of ownership

When you get to this stage, the vendor, or his lawyer, conveys legal title in exchange for the balance of payment. The transfer of ownership and possession of the property take place at the same time. You therefore get the keys there and then and the property is then yours.

The completion meeting was set for 10th October 2011, at the Notary Office in Antequera. Although we had given Power of Attorney to Alvaro, Rita and I decided we would like to be there for the signing in person. As the vendors had separated and moved back to the UK, their lawyer was there on their behalf. As we needed to have a Spanish bank account before we could complete, Paul the agent helped us out once again and took us to a branch of Unicya in a town near to the house to act as our interpreter. As it happened, the guy in the bank spoke good English and we opened our account, deposited some money and was given a debit card all within half an hour.



Once we returned to the UK, we transferred enough funds to Spain to cover the purchase and all costs. We used a money transfer company because of the amounts, and to get a better rate than the tourist exchange rate.

We returned to Spain on the 9th October 2011, knowing the bank was happy, our lawyer was happy, and the Notary was ready - what could go wrong?

Setback

No sooner had we landed, I received a call from our lawyer Alvaro saying the deal would not happen tomorrow as the husband had revoked his lawyers Power of Attorney, and could not be contacted.

So, after all the hard work and expense it looked like the deal was off. Despite this setback, we still had to turn up as arranged at the Notary's office to show that we were ready to do our part. Because of the situation with the bank wanting to repossess the property, the Notary said he would send the vendor a letter stating he had ten days to make contact and decide what he wanted to do. If no contact was made then, the bank would take the house back and it would go to auction, which would mean we would probably lose the house.

We flew home very disappointed, but all we could do was wait ten days and see what happened. As time went by, as I was resigned to the deal not going ahead. After eight days Paul rang me to say that the husband had changed his mind and wanted to sell, but I had to be in Spain the next day. The Estate Agents agreed to pay my air fare and hotel bill, which came to about 200 euros, but would mean them keeping their commission of 10,000 euros.

Rita could not get the time off, so I organised my flight and went on my own. Paul met me at Malaga airport, took me out for a bite to eat and dropped me at my hotel.

The next day, after going to the bank with Alvaro to get the Bankers Drafts for the agreed debts, we all met at the Notary's office, me, Alvaro, Paul and his boss, the vendor's bank manager, a translator, a clerk, the vendor's lawyer and the Notary. Before signing, the cheques had to be given out. The first one and the biggest was to the bank. He took his cheque and legged it, relieved to have cleared their debt I think. It took about an hour to have all the papers signed, altered, signed again by everyone involved, but the house was now ours.

The process had been long and frustrating with delays and hold ups, but at last we had the keys to our new home in the sun. I flew home the same day, knowing we had our house and we could now plan the next stressful step - a permanent move, leaving behind loved ones, friends, relatives and our Cottingham home of more than 20 years.

Maybe this part would go without a hitch.

Thanks for reading and the next part of the story will be in the July Issue.

Expert Patients Programme in the Darby & Joan Hall, Finkle Street, Cottingham

The EPP is a FREE self management course for anyone over 18 living with any long term health condition. It is available to people in Hull and the East Riding.

It is run over six weekly sessions by City Health Care Partnership, trained volunteer tutors, who also have long term health conditions. Each weekly session lasts 2 hours and 30 minutes.

The EPP Programme aims to help you take more control of your health by learning new skills to manage your condition on a daily basis.

The course looks at the following topics:

- Dealing with pain and extreme tiredness
- Coping with feelings of depression
- Relaxation techniques and exercise
- Healthy eating
- Communicating with family, friends and health professionals
- Positive planning for the future

For more information or to book your place on a course please contact, Eileen Macfarlane, EPP Coordinator, City Health Care Partnership CIC, 2 Earls Court, Priory Park East, Henry Boot Way, Hull, HU4 7DY. Telephone: 01482 344297, alternatively email: epp@chcp Hull.nhs.uk.

Course Dates: Wednesday 20th June - 25th July 2012, in the Darby & Joan Hall, 58 Finkle Street, Cottingham, East Yorks, HU16 4AZ, between 10.00 am – 12.30 pm.

Cottingham
Kitchens &
Joinery



Cut out the middle men & save £1000's

Call Dave now on **07800 500942**



Designed Kitchens & Bedrooms, Fit Only, Revamps - A Complete Service.
Call for free friendly advice on 01482 840 951 / 07800 500942
or email dave.66@hotmail.co.uk



Blue Kangaroo

ADVENTURE PLAY & PARTY CENTRE

PLAY • CAFE • PARTY

Open Everyday !
Mon-Sat, 9am - last admission 5pm
Sun, 10am - last admission 4pm

Please call at weekends as we host lots of fantastic **Exclusive Children's Birthday Parties !!!**

Stay cool this Summer in our fully Air Conditioned 'Top Rated' cafe while the kids have fun on the Play frames.

For your next Birthday Party, why not try our themed Pirate & Princess party which now includes nail painting for the pretty princesses and tattoos for the brave boys !

Book your Party - 844200

0-8 years old Soft Play

Summer Saver Cards now available

Come as many times as you like from 23rd July until 31st Aug 2012 (All the school summer holiday !)

Option 1:	Admits 1 child and 2 Adults -	£20
Option 2:	Admits 2 children and 2 Adults -	£25
Option 3:	Admits 3 children and 2 Adults -	£30

More than 50% OFF
Based on only 2 visits per week

www.bluekangarooplay.co.uk

174 Finkle St, Cottingham, HU16 4AZ. tel: 844200



LET
GOOD
THINGS
HAPPEN

Mercure

Good things happening in 2012 at Mercure Hull West Hotel.

Welcome to the Mercure Hull West Hotel, your local hotel. We are so much more than just a place to stay. Mercure Hull West is a place to meet, eat, drink and have fun, and the great thing is, we're just up the road. We have a variety of events that take place at the hotel with something to suit everyone, so why not take a look and see what takes your fancy.

	Summer BBQ Friday 8th June 7.30 pm till 1am £17.50 per person Pull out your summer wardrobe and enjoy a 2 course BBQ and Disco	
Fathers Day BBQ Sunday 17th June Bar opens from 12 noon with BBQ served at 12.30 £15.95 per adult £8.00 per child (under 12) Price includes 3 course BBQ and gift for dad		School's Out BBQ Friday 20th July 7.30 pm till 1 am £17.50 per person Rewind the decades and re-live your youth with our 2 course BBQ and disco till late
	Hawaiian BBQ Friday 2nd August 7.30 pm till 1 am £19.50 per person Taste the tropics with a 2 course BBQ and disco till late	

Mercure Hull West
(formerly Ramada Jarvis)
Grange Park Lane
Willerby
Hull
HU10 6EA 01482 672809

700 Hotels worldwide
mercure.com

A-CLUB



Adele McLeans presents a cheque for £1,536.85p to Crystal Ness of Macmillan Cancer Support

Adele McLeans presents a cheque for £1,536.85p to Crystal Ness, Humberside Fundraising Manager for Macmillan Cancer Support at the Black Prince, The Parkway, Cottingham at a presentation held recently.

The money was raised by landlady Michelle Fluery and her customers at a family fun day where events for all ages were the order of the day. The fun day was held to help raise funds in aid of Adele, a Black Prince regular, who was diagnosed with lung cancer in November 2011.

Adele has undergone radiotherapy on her left lung and three tumours on her head. She has also suffered a stroke which left her speechless, but she has fought back and has now recovered. Unfortunately she has just received further bad news that the cancer has now spread to her right lung, but she remains resilient.

She now is looking forward to helping at the next major fundraising event on August 25th when the World's highest mobile bungee is on site at the Black Prince between 6.00 pm and 8.00 pm. This is in aid of Macmillan Nurses Appeal.

For further information about the bungee jump and sponsorship forms, contact Michelle at the Black Prince on telephone 01482 84572.

Pictured above: Adele (centre), Michelle Fleury (landlady) and Crystal Ness of Macmillan.

Live @ The Blue Bell Live Jazz every Sunday from 5

Hosted by RevRay
with guest performers,
and monthly open mic when
aspiring musicians can join in
*Frank also hosts the weekly
"Face The Music" night*
at the Blue Bell from 9 every Wednesday
with guest performers and any aspiring
musicians are also invited to join in.

The Bluebell Bell
West Green, Cottingham
Tel. 847113

EVERY THURSDAY



Cottingham Market

**Do All Your Shopping in
Our Friendly Environment**

Fruit & Veg, Fashions, Hot Food Take-Away,
Home Baking, Underwear, Tights, Socks, In-Soles,
Hardware, Electricals, Tools, Bedding, Fish, Shoes,
Slippers, Plants, Flowers, Artisan Bread, Bags, Cosmetics,
Scarves & Hats, Watches, Mobility, Cheeses and Butter,
Charity Stall and too much more to mention

THE GREEN, COTTINGHAM



The Tubs and Baskets Competition will take place on Friday 13th July

As part of the Cottingham in Bloom, the Cottingham Tubs and Baskets competition this will take place on Friday the 13th July.

The categories will be House/multi occupancy, shops/public houses/cafe. Application forms can be picked up from the Parish Council Offices on Market Green.

Cottingham
Kitchens & Joinery

Enjoy the **GREAT** outdoors more

Lifestyle Spaces - Decks -
Summer Houses - Pergolas
and Gazebos

For **FREE** friendly local advice call Dave now on **07800 500942**

Studio Sculpt

Studio Sculpt is a brand new innovative Studio bringing you the hardest and most enjoyable classes around. Classes include: Zumba, Studio Resistance, Studio Spin, Studio Circuits, Studio Equilibrium and more!

HALF PRICE CLASS
With this Voucher!

**Personal Training £35 per hour;
£125 per 5 sessions; £200 per 10 sessions
and Classes £4 each or 10 for £30**

**Studio Sculpt, Suite 8 Kings Parade,
Cottingham (above Pasco's)**

For more information contact us: studiosculpt@hotmail.co.uk
www.studiosculpt.co.uk - www.facebook.com/studiosculpt

07532 321529

The Traditional Chinese method of Acupuncture treats the whole person, body and mind, and not just the symptoms

Traditional Chinese Medicine (TCM) has existed for over 4000 years and is a comprehensive medical system with its own principles, diagnostic methods and therapies.

TCM views the body as an organic whole with a network of meridians connecting and co-ordinating the internal organs, Qi ('vital energy'), blood, body fluids, muscles, bones, tendons and the skin.

TCM also holds as its central belief that health in all parts of the body is due to the relative balance of Yin and Yang. Yin-Yang theory forms the basis of TCM's holistic approach to health and disease and also offers practical guidance in the prevention and management of diseases.

TCM has two basic components - Chinese Herbal Therapy and Acupuncture.

The aim of Chinese Herbal Medicine and Acupuncture is to regulate the meridians or channels of the body to unblock the stagnation of Qi, as it believes that the disease is caused by the energy blockages within the body.

The channels are related to the internal organs, which if out of balance is another important factor in the cause of disease. Chinese Herbal Medicine and Acupuncture are used to correct this imbalance.

Chinese Medicine is therefore a truly holistic form of medicine, aiming at treatment of the whole body rather than just the symptoms.

Problems and Diseases commonly treated by TCM

Dermatological:

Eczema, Herpes, Psoriasis, Acne, Hair Loss, Itching, Athlete's Foot, and other Fungal Infections, etc.



HERBGARDEN
CHINESE MEDICAL CENTRE

*Acupuncture and
Chinese Herbal Remedies*

Free Consultation

15% OFF

**First Treatment
New Clients Only**

**Bring this Coupon with you
to receive your discount**

Member of ATCM
Recognised by Most Private
Health Schemes

28 BUTCHER ROW
BEVERLEY HU17 0AB

TELEPHONE 01482 888152



Muscular, Neurological, Skeletal and Vascular:

Arthritis, Sciatica, Back Pain, Lumbago (lower back pain), Frozen Shoulder, Tennis Elbow, Gonitis, M.E., Stiff Neck, Hemiplegia, Neuralgia, Facial Pain, Stroke, Sprain, Sports Injury etc.

Internal:

High Blood Pressure, Palpitation, Obeseness, Asthma, Bronchitis, Headache, Dizziness, Migraine, Nausea, Vomiting, Gastritis, Colitis, Indigestion, Peptic Ulcers, IBS, Diarrhoea, Edema, Diabetes, Constipation, Haemorrhoids, Cold, Flu etc.

Men's Problems:

Ejaculation Praecox, Low Sperm Count, Impotence, Prostatitis, Sex Drive Problems.

Women's Problems:

Irregular Periods, Infertility, Habitual Abortion, Anaemia, Menopausal Syndromes, Premenstrual Tension, Discharges, Fibroids, Cysts, Endometriosis, Morning Sickness, etc.

Ears, Eyes, Nose and Throat:

Otitis, Tinnitus, Sore Throat, Hay Fever, Pharyngitis, Rhinitis, Sinusitis, etc.

Cancer and Tumour:

Herbal therapy can build up your immune system to support any other medical treatment for more serious medical conditions.

Addictions:

Tobacco, Drugs, Alcohol, Reduce Weight etc.

Mental and Emotional:

Anxiety, Depression, Stress, Panic Attack, Insomnia, Dementia, etc.

Herbgarden have been situated in Butcher Row, Beverley, for the past seven years and are a very respected medical centre in the area, with many satisfied customers over the years. There are customer recommendations displayed in the windows of the clinic and many more are available to see if you wish.

For further information and appointments, telephone 01482 888152 or call in at the Herb Garden, 28 Butcher Row, Beverley.

Support the advertisers who appear within the Cottingham Times



Haltemprice Art Group's 65th Annual Exhibition Winners

Following the Haltemprice Art Group's 65th Annual Exhibition (Cottingham Civic Hall April 18th to 21st). Here is a list of the following trophy winners:-

Armstrong Trophy — Best watercolour— Carol Davidson
 Cochreme Cup -Best painting in oils- Sandra Holle Hipson Trophy- Best work in pastels- Jill dimming Bagnall Cup - Best work in mixed/other Media - Jill Hardaker
 Walgate Cup - Best still life or flower study- Gill Stansfield
 Booth Cup - Best landscape- Maisie Smithson Ada Walker Memorial Trophy- Best portrait of person or animal - Olive Hickson
 Nicholson Cup-Adjudicator's personal favourite - Carol Davidson
 H.H. Rodmell Cup - Best progress made this year- Jean Major
 Favourite painting of the visitors Number 121 Mother Love - Olive Hickson.
 Pictured above is the Armstrong Trophy Winner for best Watercolour by Carol Davidson entitled Camel View.

Come and enjoy our 5 STAR Fish and Chips delicious freshly cooked in our newly refurbished Hallgate premises. You can now enjoy your favourite dish, which is cooked in 100% vegetable oil, in our light and airy seating area, no need to wait to get them home. We are now serving coffee, tea to make it even better.
 Find us on Facebook.



Opening hours:

Monday to Thursday Lunch 11.30 am - 2.00 pm

Monday to Thursday Evening 4.00 pm - 10.00 pm

Friday to Saturday 11.30 am - 10.00 pm

Sunday 4.00 pm - 9.00 pm

WE ARE OPEN BANK HOLIDAYS

162 Hallgate, Cottingham

Tel: 841689



£2 OFF
 any purchase over £10.00
 with this voucher.
 Cottingham Only!!!
 *One voucher per customer
 Valid until 14th June 2012

COTTINGHAM DAY - SATURDAY 7TH JULY OPEN DAY & CLASSIC MOTOR CYCLE DISPLAY

(Featuring machines from the last 100 years plus many Harley Davidsons)

**ON THE CAR PARK AT
 ELM TREE HOUSE
 (THE MEMORIAL CLUB)
 Finkle Street, Cottingham. From 12 noon to 4.00pm.**

As part of the Cottingham Day Celebrations The Cottingham Memorial Club invites you to come and view Elm Tree House. This fine house is a beautiful Grade 2 listed building and combines our architectural heritage with these Classic Motor Cycles

The house was built in 1820 and became the home of the Cottingham Memorial Club in 1950. The Club has a mixed membership of almost 800. It houses five full size snooker tables, provides regular entertainment, has quiz nights and serves excellent food.



For more information contact the Club Secretary or visit our website at:
www.cottinghammemorialclub.co.uk or email contact@cottinghammemorialclub.co.uk



Myeloma Awareness Week





21 – 28 June

If you have any unwanted books, CD's, DVD's or videos which you would like to donate for a MyelomaUK Charity Stall.

Please contact Tony Tordoff (Dunswell) Tel. 858244

Get involved today

One thing you can't recycle is wasted time!

Crossword Solution from page 14

1	G	O	S	S	I	P	E	D		5	K	V	E	T	C	H
	R	O		N		A					A		R			E
9	O	M	N	I	V	O	R	E		10	A	N	K	A	R	A
	O		A		A		A		12	E		C		C		D
11	V	E	N	T	R	I	C	L	E		13	O	S	I	E	R
	E		T				H				L		U		N	E
				14	E	P	E	E		16	S	A	V	A	G	E
17	O		18	P		R						E		S		T
19	C	A	R	P	O	R	T		20		21	D	O	R	Y	
	C		A		M		E				I				22	D
24	A	L	I	B	I			25	E	L	S	E	W	H	E	R
	S		S		N		D				D		H		F	M
27	I	B	I	D	E	M			28	B	A	S	I	L	I	C
	O		N		N						I		R		E	N
29	N	E	G	A	T	E			30	E	N	C	L	O	S	E
																D



What is Yoga Really All About?

Yoga is something you may or may not have tried. Perhaps you practice yoga all of the time and wouldn't want to live without it. Or maybe you find it a little strange and put it into the category of "new age" therapies that are not for you. It helps to gain a better understanding of what it is really all about in order to demystify it. Let us delve into the philosophy that underlies yoga.

Yoga is a holistic therapy that has as its purpose the redirecting of negative energy and stress in order that stress will not have the opportunity to build up in the body and lead to problems in the form of disease and illness. In fact the preventative approach is what makes up most holistic practices.

Yoga practitioners feel that what we want most from life is to find joy and happiness.

However they believe that many people settle for so much less. They feel that at some point in time the desire for deeper and lasting happiness is something that everyone wants to find. This is what yoga seeks to do – discover a deeper feeling of bliss that comes from inside, as opposed to fleeting pleasures that come from the outside.

If a person feels that their life is lacking in bliss, joy and a sense of purpose then yoga can help them to find meaning that comes from within, as opposed to meaning that is sought through external avenues such as their work or the money they earn. Yoga is something that can be practiced at any age but many people do not make it a part of their lives until they find themselves needing more from their lives than they presently are receiving.

As the spirit evolves in your life (which is what yoga taps into – the spirit that lies within everyone) an individual can discover a greater sense of both peace and tranquility within themselves. This comes from the core of what makes you who you are.

As your life progresses and your spirit grows wiser and more insightful you are brought to a new stage of your life in which you yearn for a greater sense of well-being, and want more happiness, joy and peace. Yoga can help bring you that. You can work towards renewing and enriching your spirit and this can motivate you to higher stages of growth.

Practicing yoga regularly and not just once in a while can benefit you physically in that it helps with balance and poise as well as helping to keep the body strong and healthy. It helps you to grow, develop and thrive. It works well when combined with a healthy lifestyle of eating nutritiously and getting plenty of physical activity. Yoga can center your mind and keep it calm, serene and clear which will enable you to turn your focus inwardly to listen to your spirit.

Yoga can help many to discover a path they didn't know existed and which leads to true happiness and fulfillment.

HALLGATE LANDSCAPE CENTRE

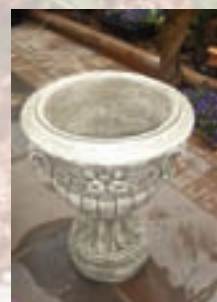
Rear of 146 Hallgate (Alterframe), Cottingham
For all your landscaping requirements

Paving

Natural Stone :: Yorkstone
Stone Circles
Industrial Flags



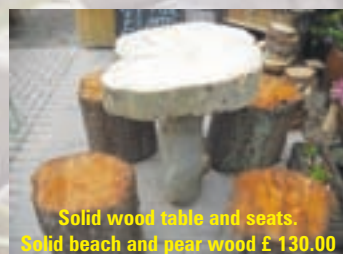
Troughs from £15.00



Large stone
planters
different
designs to
choose from.
Starting at
£70.00

Fencing

Close Board, Lap Fencing,
Trellis (Also made to size),
Rails, Boards, Posts, Rose Arches
Pergolas (made to order)
Railway Sleepers



Solid wood table and seats.
Solid beech and pear wood £ 130.00



**Carved Log planters and other solid
timber items all hand carved.**
From £20.00

Aggregates

Sand, Ballast, Gravel, Slate
Golden Gravel, Cotswold
Chippings, Limestone, Soil,
Compost, Tree Mulch, Logs
Carved Mushrooms
Slate Features
Log Stepping Stones
Garden Benches, Bird Tables
Patio Sets



**Various trellis from 6ft x 1ft
to 6ft x 6ft from £6.00**

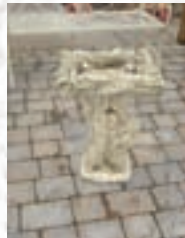


**Wrought iron table and
2 chairs £149.00 delivered**



**New style woodern bench with
arm rests. £ 75.00 various other
benches for sale**

From round
stepping stones
to 450 x 450 mil
pavers.
Half moon
pavers also
available.
15 Metre patio
kits from
£180.00



Plants & Planters

Plants and Shrubs
Patio Tubs
Hanging Baskets
Wooden Planters
Wooden Troughs
Yorkstone Planters
Glazed Pots
Log Planters

Sheds

Various sizes and styles
From 5ft x 4ft to 16ft x 8ft



Natural Benches £55.00



**Hanging Baskets
from £6.50**

**New Paving
Range
in Stock
including
Stone Circles**

**CALL IN AND SEE OUR DISPLAYS -
JUST THROUGH THE ARCH
ALL LANDSCAPING WORK UNDERTAKEN**

**Tel. 01482 846069 or
Mobile 07817 214792**

**A brand new home
for your old one?
Why don't we swap?**



Newland Court

Cottingham Road,
HULL, HU5 2DB.



Speak to Shepherd Homes today!

When you walk through the door of a Shepherd home and look closely at the levels of specification, quality of craftsmanship and care taken with every home we build, you'll see what sets us apart from other builders. But don't just aspire to it – with this fabulous deal, you can get moving now!

Luxury 4 & 5 bedroom detached homes **from £299,995**

**Part
Exchange***

**Carpets fitted
throughout***

Available if you're ready to move now!

Homes at Newland Court feature an exceptional specification including...

- Stylish kitchen with fully integrated appliances
- Ceramic floor tiles
- Timber bi-folding patio doors to lounge and dining room
- Turfed gardens



Marketing Suite and Showhome open
Thursday - Monday, 10.30am - 5.30pm

01482 341667

Register your details online to receive our
latest news and exclusive offers.

shepherdhomes.com



*Offer is only available on selected developments and properties. Terms and conditions apply. Full details are available from a Shepherd Homes sales office. Prices correct at time of going to press. Photography represents a typical Shepherd home.